

Workshop on “Linking water framework directive and floods directive ”

# **Coordinated Application of the FRMD and the WFD – our approach in Germany**

Dipl.-Ing. Corinna Baumgarten  
- Federal Environment Agency – Department water and soil -

Rome, October 8<sup>th</sup> 2014

- Our discussion in Germany
- Components of our approach:
  - A) **Measures** with potential synergies
  - B) Joint **data** management
  - C) **Public information** and consultation
- Conclusion

## ...the long way ...

- In 2009 and 2010: joint Federal Government and Federal States workshops
  - German Working Group on Water Issues of the Federal States and the Federal Government (LAWA)
  - Permanent Working Group on Flood Protection and Hydrology
  - Group of experts – started to work end of 2011
- Recommendations on coordinated application of the FRMD and WFD adopted in September 2013
- Basic consensus
  - Guidance
  - Common position

- Different targets
- Both intend to protect the **environment**
- Both implemented to largely identical management units  
(**river basin districts**)

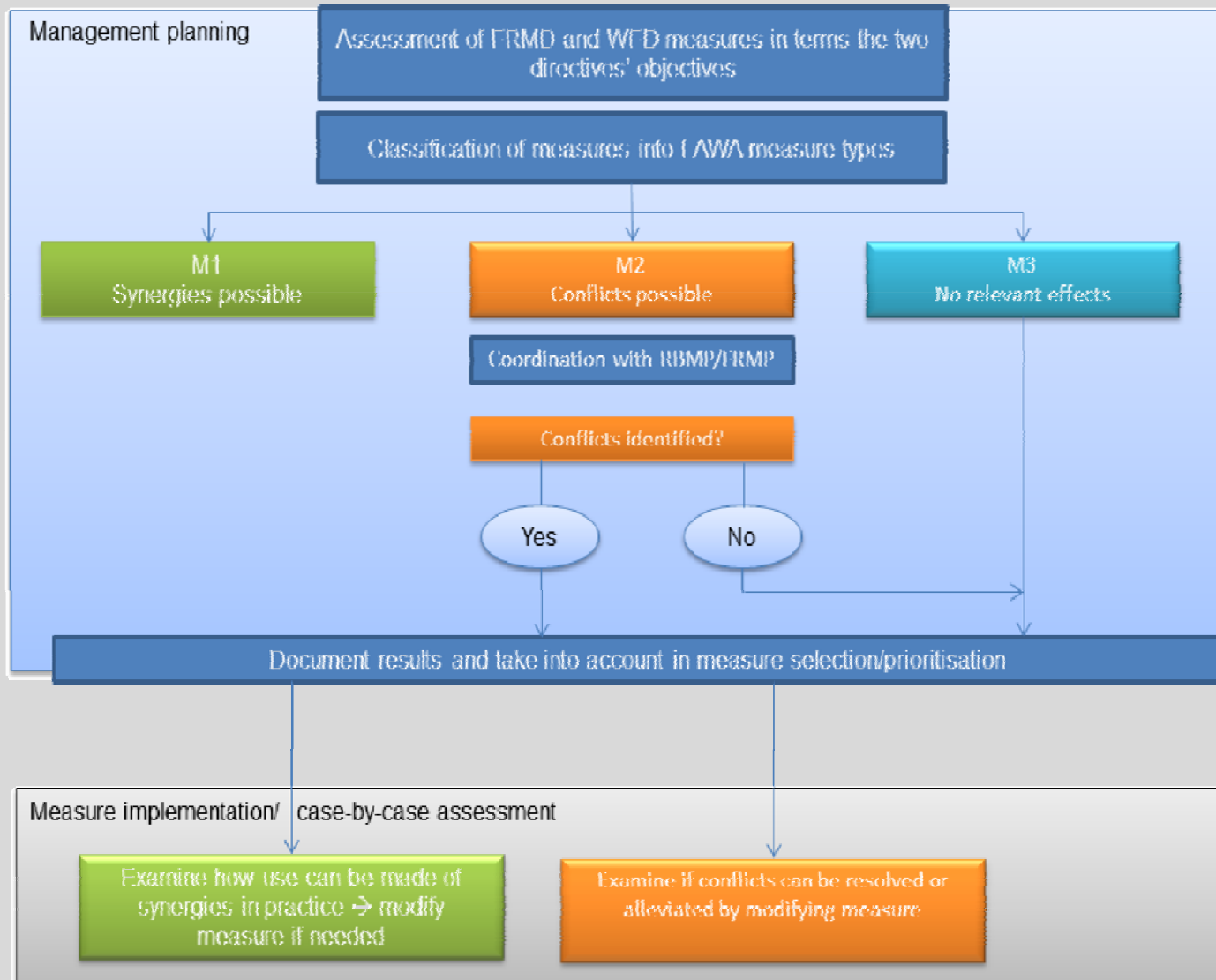


**Compare measures** and check them for potential synergies and conflicts with the other directive's objectives

Potential synergies:

- Achievement of the objectives
- Planning, prioritizing and implementing measures and their effects in terms of objectives
- Provision of reporting data
- Involvement of interested parties and the public

# Assessment of measures (I)



## FRMD-Measures:

- Are the measures able to **reduce pollution**?
- Are the measures able to foster or enhance **ecological potential**?
- When using water retention areas to cut flood risk, is it possible to increase the area available for the river and its **hydromorphological development** at the same time?

## WFD-Measures:

- In design and implementation of measures account should also be given **to flood protection and flood risk management aspects**

- **M1** → measures that **support the objectives** of the other directive
- **M2** → Measures that **may cause a goal conflict** and require case-by-case assessment
- **M3** → Measures **not relevant** to the other directive's objectives



# LAWA List of Measures

Measure number	Directive	Pressure type under WFD Annex II ----- EU type under FRMD	Type of measure	Explanation/description (text box)	Relevance to WFD/FRMD	Recording/count (optional)	KEY TYPE measure code
<b>WFD measures</b>							
1	WFD/SW	Point sources: municipalities/households	Construction and upgrading of municipal wastewater treatment plants	Construction of new wastewater treatment plants or upgrading of existing plants with regard to treatment capacity	M2	Individual plant	1
2	WFD/SW	Point sources: municipalities/households	Upgrading of municipal wastewater treatment plants to reduce nitrogen discharges	Technical upgrading specifically to reduce nitrogen loads, e.g. added denitrification stage	M3	Individual plant	1
...	...	...	...	...	...	...	1
<b>FRMD measures</b>							
301	FRMD	Prevention	Designation of priority and restricted areas in spatial and regional plans	Depiction of existing and as yet lacking priority and restricted areas in spatial and regional plans. Also includes modification of regional plans, safeguarding of retention areas, modifications to land use, provision of areas for flood protection and water body development.	M1	Individual measure [quantity]	
306	FRMD	Avoidance; reduction	Flood-adapted construction and upgrading	Flood-safe infrastructure construction and flood-checked site selection for building	M3	Individual measure [quantity]	

# Results of the classification

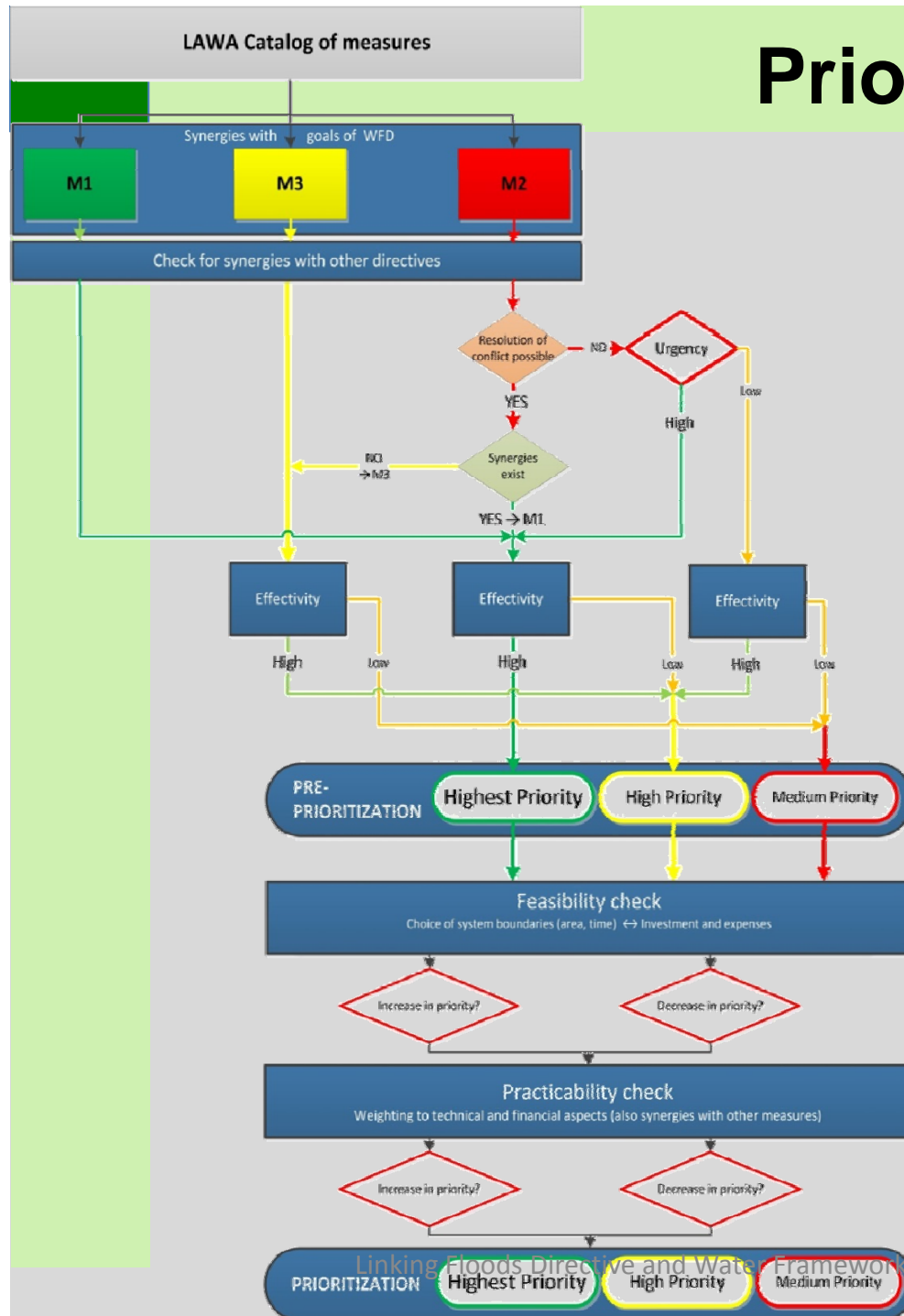
	WFD	FRMD	Conceptual Measures
<b>M 1</b>	16	11	8
<b>M2</b>	22	11	1
<b>M3</b>	62	7	-

„Große Mittweida“ – a river at flood risk in Saxony and an example for improvement of flood protection with regard to hydromorphological aspects



Source: PROJEKTA Ingenieurgesellschaft für Tiefbautechnik Auerbach mbH

# Prioritization



Four general criteria are relevant in prioritization:

- Synergies with objectives under WFD and other directives
- The measures' effectivity with regard to the FRMD and the WFD
- The measures' cost efficiency
- The measures' feasibility

A lot of data are reported according to the implementation of the FRMD and the WFD

→ technical linkage is relatively easy

→ active identification and presentation of these links needed

## Links can be provided for:

- Management areas
- Pressures and impacts
- Measures that effect the implementation of measures under the other directive in each case
- Reasons for the designation of heavily modified water bodies
- Use of exceptions

## Recommendations:

- Use shared structure and data resources
- Joint or at least parallel public consultation in SEAs for flood risk management plans or programs of measures

## Objectives:

- Provide the public with multiple information at the same time from a single source
- Minimize the cost for the proceedings
- Make the decisions transparent
- Enhance public acceptance of measures

- **Objectives** of FRMD and WFD are different, synergies are expected according to measures, data and public information.
  - **Measures** with potential synergies (M1) should be preferred.
  - **Joint data** management is needed.
  - **Joint public information** and consultation leads to a transparent presentation of synergies and conflicts
- These recommendations have to be regularly updated and reviewed!

**Thank you very much for your  
attention!**

→ For Further Information: [www.lawa.de](http://www.lawa.de)

corinna.baumgarten@uba.de



Source: PROJEKTA Ingenieurgesellschaft für Tiefbautechnik Auerbach mbH