



**AUTORITÀ DI BACINO DEL FIUME PO**  
**Bacino di rilievo nazionale**

**Po river basin**

Roma – 8-10-2014

Francesco Puma – Po river basin Authority

via Garibaldi, 75 - 43100 Parma - tel. 0521 2761 – [www.adbpo.it](http://www.adbpo.it)

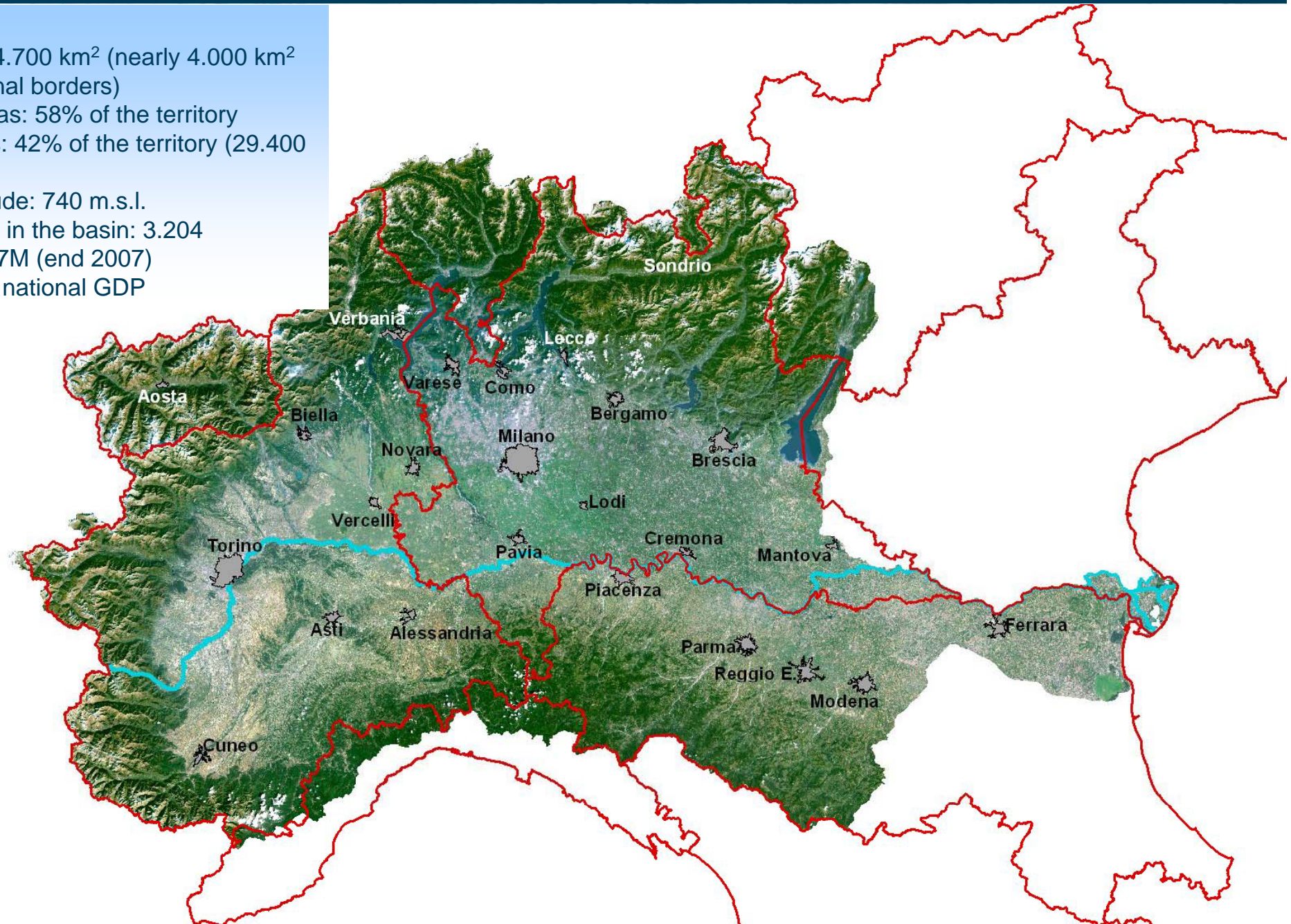
# Main european rivers



# Characteristics

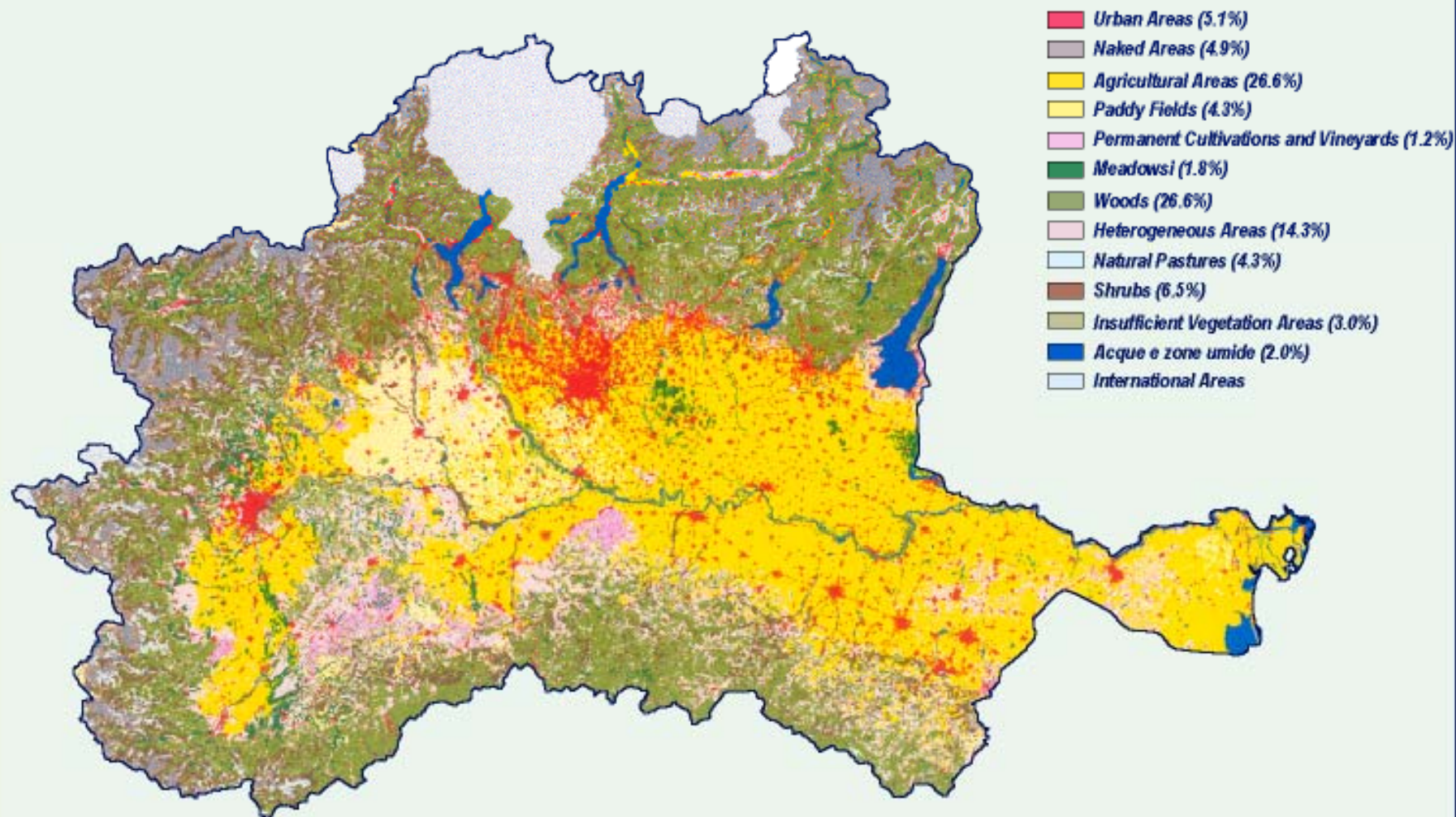
## Overall data:

- Basin area 74.700 km<sup>2</sup> (nearly 4.000 km<sup>2</sup> outside national borders)
- Mountain areas: 58% of the territory
- Alluvial plains: 42% of the territory (29.400 km<sup>2</sup>)
- Average altitude: 740 m.s.l.
- Municipalities in the basin: 3.204
- Population: 17M (end 2007)
- GDP: 38% of national GDP



# Land use

## Land Use

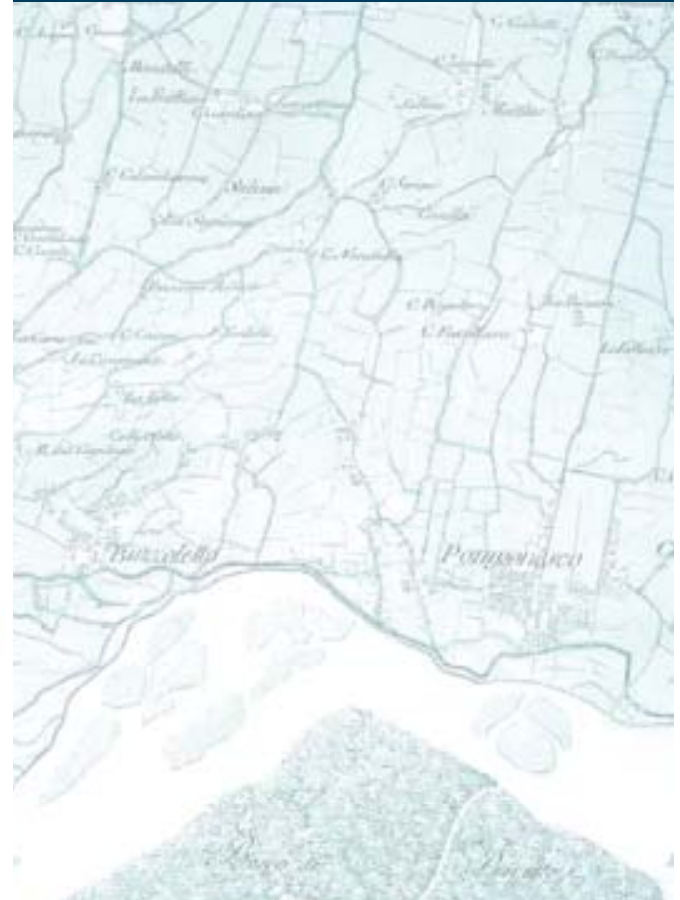
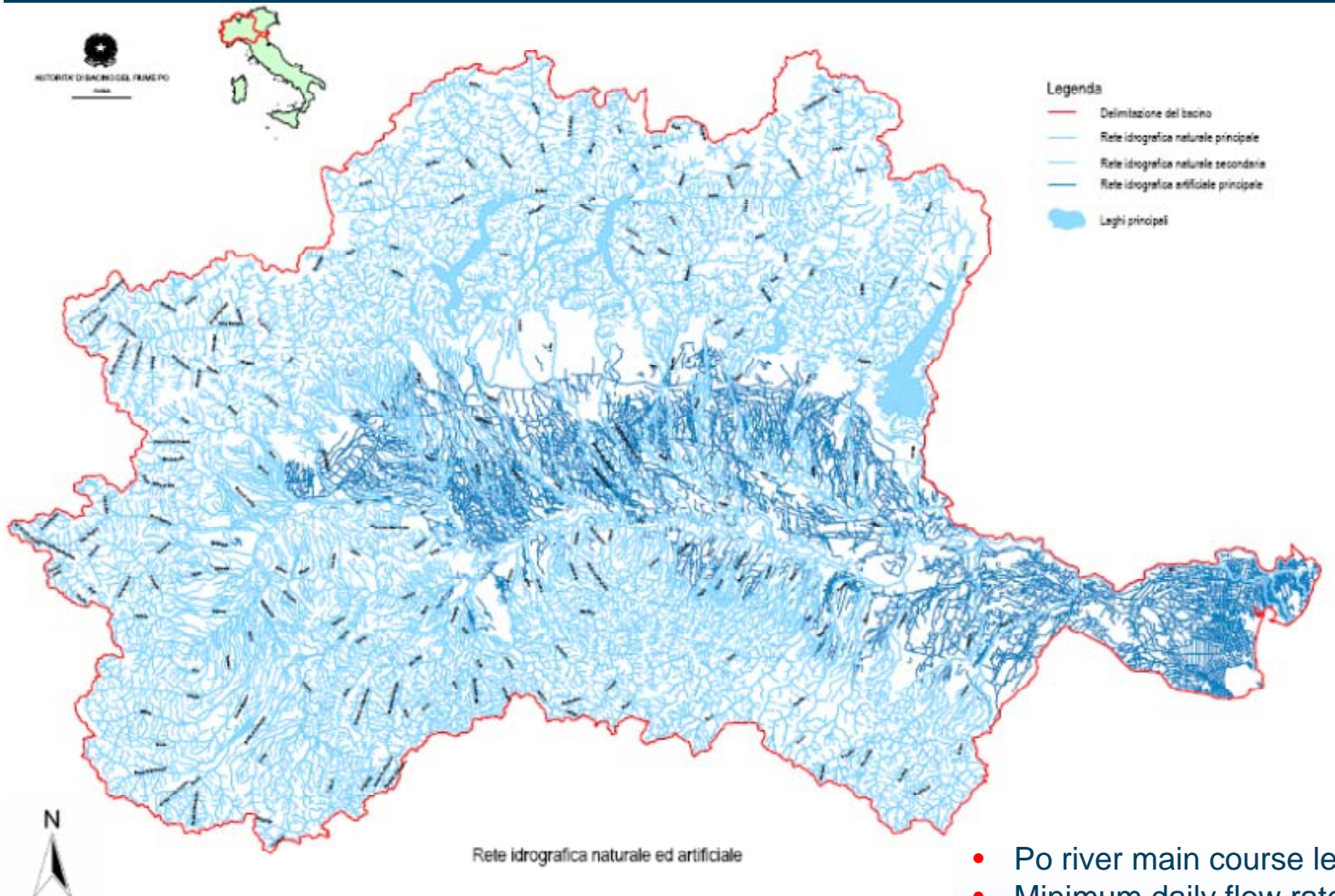


**AUTORITÀ DI BACINO DEL FUME PO**

Bacino di rilievo nazionale

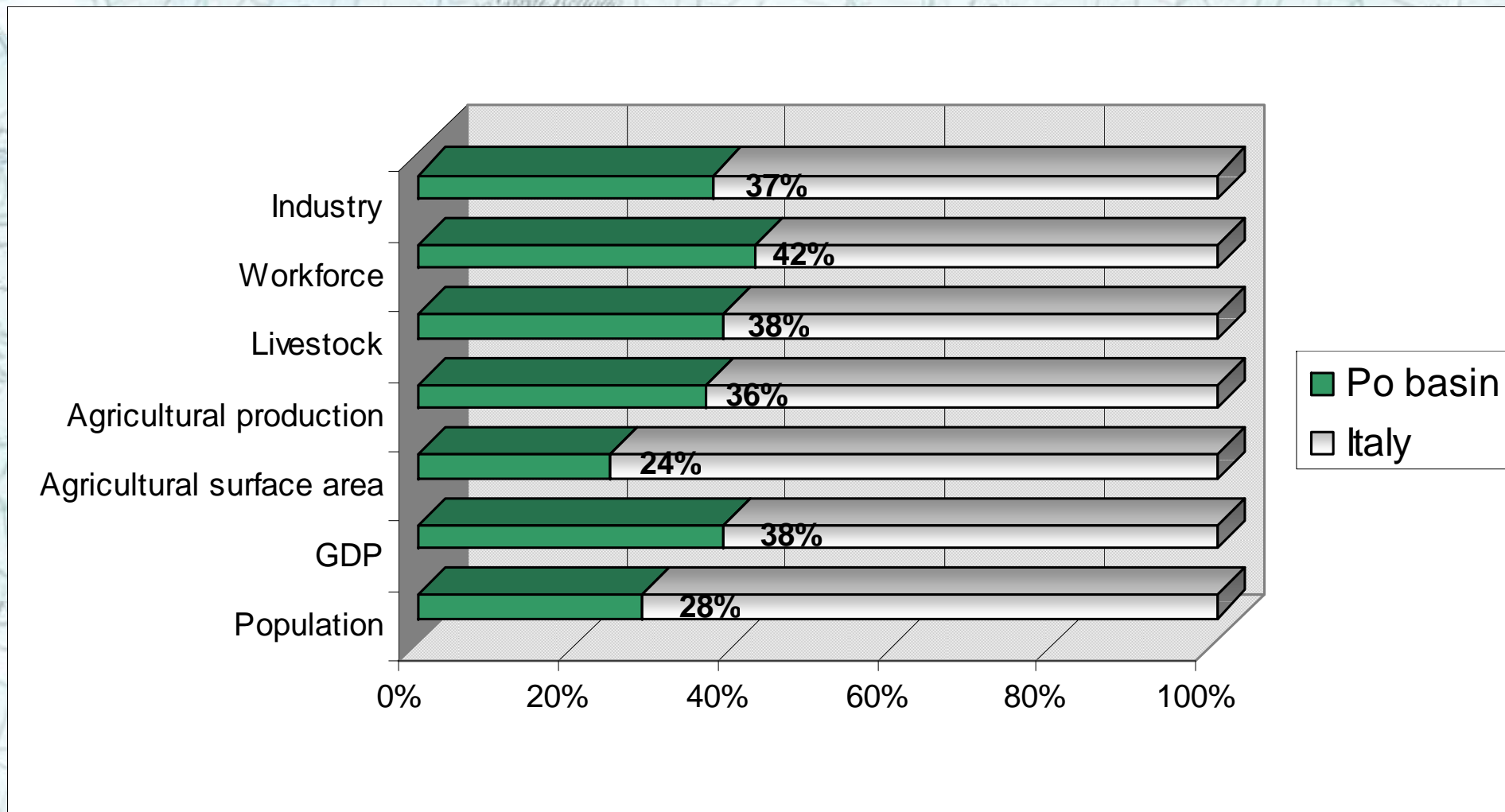
via Garibaldi, 75 - 43100 Parma - tel. 0521 2761 - [www.adbpo.it](http://www.adbpo.it)

# Hydrology



- Po river main course length 652 km
- Minimum daily flow rate at Pontelagoscuro 168 m<sup>3</sup>/s
- Medium daily flow rate at Pontelagoscuro(1923-2000) 1500 m<sup>3</sup>/s
- Maximum daily flow rate at Pontelagoscuro 10.300 m<sup>3</sup>/s
- Average annual weather influx ~ 78 \* 10<sup>9</sup> m<sup>3</sup>/y
- Average annual surface flow 46,5 \* 10<sup>9</sup> m<sup>3</sup>/y  
(60% of average annual weather influx)
- Evapotranspiration and deep infiltration 32 \* 10<sup>9</sup> m<sup>3</sup>/y
- Of which found back in groundwater 9 \* 10<sup>9</sup> m<sup>3</sup>/y

# Main pressures



Data from ISTAT - 2003

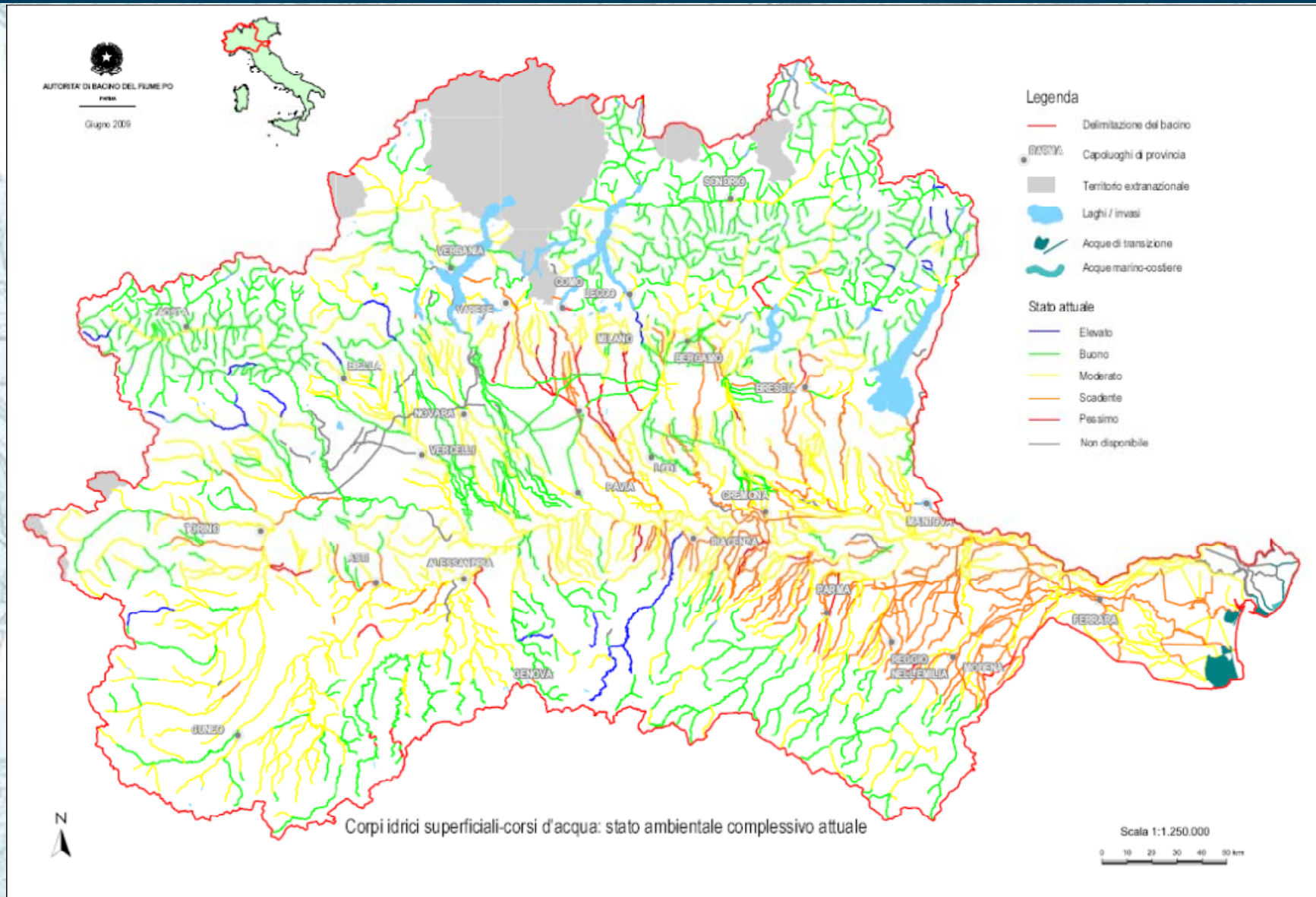


**AUTORITÀ DI BACINO DEL FUME PO**

Bacino di rilievo nazionale

via Garibaldi, 75 - 43100 Parma - tel. 0521 2761 - [www.adbpo.it](http://www.adbpo.it)

# The environmental status of surface water bodies

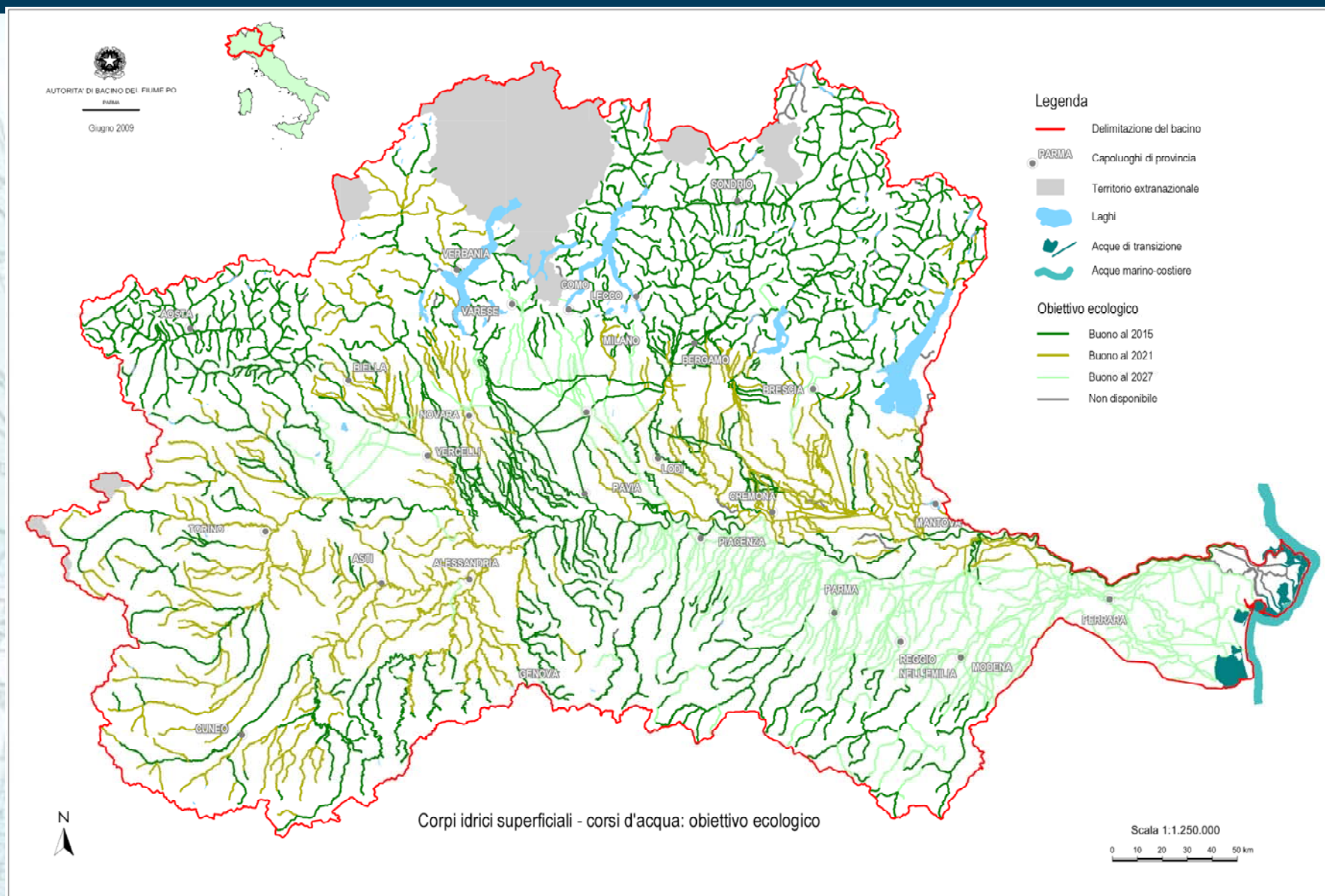


**AUTORITÀ DI BACINO DEL Fiume PO**

Bacino di rilievo nazionale

via Garibaldi, 75 - 43100 Parma - tel. 0521 2761 - [www.adbpo.it](http://www.adbpo.it)

# Environmental objectives for surface water bodies: ecological status



**AUTORITÀ DI BACINO DEL FIUME PO**

Bacino di rilievo nazionale

via Garibaldi, 75 - 43100 Parma - tel. 0521 2761 - [www.adbpo.it](http://www.adbpo.it)



# Main criticalities concerning water resources

**Surface and groundwater pollution**

**Drinking water contamination**

**Aquatic ecosystems quality**

**Hydromorphological changes**

**Overexploitation of water resources for agriculture**

**Overexploitation of water resources for hydro-electric power production**

**Changes in land use, coupled with climate change effects, and their relation to flood and landslide events**

**Environment conservation and restoration**

**The organisational side: how to manage the common good “water resources” properly, by solving conflicts and getting over the fragmentation of administrative functions**

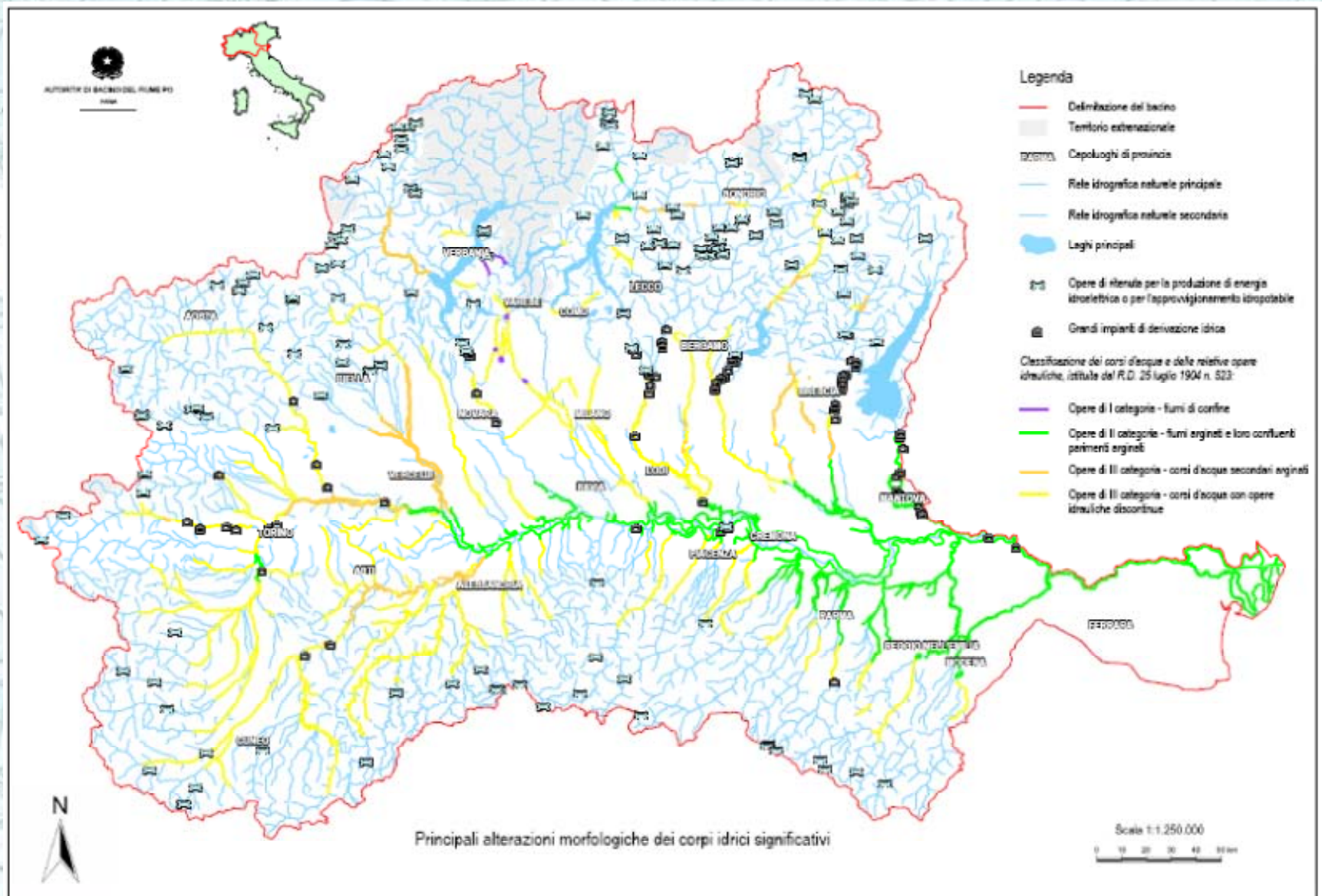


**AUTORITÀ DI BACINO DEL FIUME PO**

Bacino di rilievo nazionale

via Garibaldi, 75 - 43100 Parma - tel. 0521 2761 - [www.adbpo.it](http://www.adbpo.it)

# Hydro-morphological alterations of surface water bodies



**AUTORITÀ DI BACINO DEL FUME PO**

Bacino di rilievo nazionale

via Garibaldi, 75 - 43100 Parma - tel. 0521 2761 - [www.adbpo.it](http://www.adbpo.it)

**Thank you for your kind attention**



**Beatrice Bertolo**

**[beatrice.bertolo@adbpo.it](mailto:beatrice.bertolo@adbpo.it)**

**Info and Downloads: [www.adbpo.it](http://www.adbpo.it)**