



**ISPRA**

Istituto Superiore per la Protezione  
e la Ricerca Ambientale

**IDRAIM – stream hydromorphological evaluation,  
analysis and monitoring system**

**Guidebook for the evaluation of stream  
morphological conditions by the  
Morphological Quality Index (MQI)**

**Version 1.1**

**Massimo RINALDI  
Nicola SURIAN  
Francesco COMITI  
Martina BUSSETTINI**

---

Rome, September 2012





**ISPRA**

Istituto Superiore per la Protezione  
e la Ricerca Ambientale

**IDRAIM – stream hydromorphological evaluation,  
analysis and monitoring system**

**Guidebook for the evaluation of stream  
morphological conditions by the  
Morphological Quality Index (MQI)**

**Version 1.1**

**Massimo RINALDI  
Nicola SURIAN  
Francesco COMITI  
Martina BUSSETTINI**

---

Rome, September 2012

## LEGAL NOTICE

Neither the Institute for Environmental Protection and Research, ISPRA (*Istituto Superiore per la Protezione e la Ricerca Ambientale*) nor any person acting on behalf of the Institute is responsible for the use that may be made of the information contained in this Guidebook.

ISPRA (*Istituto Superiore per la Protezione e la Ricerca Ambientale*), has been established by Decree no. 112 of 25 June 2008, converted into Law no. 133 (with amendments) on 21 August 2008.

ISPRA performs, with the inherent financial resources, equipment and personnel, the duties of: the Italian Environment Protection and Technical Services Agency (APAT), the National Institute for Wildlife (INFS) and the Central Institute for Scientific and Technological Research applied to the Sea (ICRAM).

**ISPRA** – Istituto Superiore per la Protezione e la Ricerca Ambientale  
Via Vitaliano Brancati, 48  
00144 Roma  
www.isprambiente.it

© ISPRA 2012

**ISBN: 978-88-448-0487-9**

Reproduction is authorised, provided the source is acknowledged, save where otherwise stated.

**Graphic design**  
ISPRA

September 2012

**Citation:**

**Rinaldi M., Surian N., Comiti F., Bussetini M. (2012), Guidebook for the evaluation of stream morphological conditions by the Morphological Quality Index (MQI), Istituto Superiore per la Protezione e la Ricerca Ambientale, Roma, 90 pp.**

## Index

<b>Introduction .....</b>	<b>vi</b>
<b>CHAPTER 1 METHODOLOGICAL FRAMEWORK .....</b>	<b>1</b>
1.1 <i>Review of existing methods for hydromorphological evaluation.....</i>	<i>1</i>
1.2 <i>Overall structure of the method.....</i>	<i>2</i>
<b>CHAPTER 2 GENERAL SETTING AND SEGMENTATION .....</b>	<b>6</b>
2.1 <i>General framework.....</i>	<i>6</i>
2.2 <i>STEP 1: General setting and physiographic units.....</i>	<i>6</i>
2.3 <i>STEP 2: Confinement.....</i>	<i>7</i>
2.4 <i>STEP 3: Channel morphologies.....</i>	<i>8</i>
2.4.1 <i>Classification of partly confined and unconfined channels.....</i>	<i>9</i>
2.4.2 <i>Classification of confined channels.....</i>	<i>10</i>
2.5 <i>STEP 4: Other discontinuities.....</i>	<i>10</i>
2.6 <i>Example of segmentation.....</i>	<i>11</i>
2.7 <i>Other available data and information.....</i>	<i>12</i>
<b>CHAPTER 3 EVALUATION OF MORPHOLOGICAL CONDITIONS.....</b>	<b>14</b>
3.1 <i>Evaluation procedure.....</i>	<i>14</i>
3.2 <i>Scoring system and calculation of MQI.....</i>	<i>18</i>
3.3 <i>Testing phase.....</i>	<i>19</i>
3.3.1 <i>Sentino stream along the Frasassi gorge.....</i>	<i>19</i>
3.3.2 <i>Tagliamento River near Turrída.....</i>	<i>20</i>
3.3.3 <i>Cecina River near Casino di Terra.....</i>	<i>20</i>
3.3.4 <i>Furkelbach (Furcia Torrent) in Val Pusteria.....</i>	<i>21</i>
3.3.5 <i>Panaro River near Vignola.....</i>	<i>22</i>
3.3.6 <i>Arno River in Florence.....</i>	<i>23</i>
3.3.7 <i>Gadria Torrent near Lasa.....</i>	<i>24</i>
<b>References .....</b>	<b>25</b>
<b>APPENDIX 1 GUIDE TO THE COMPILATION OF THE EVALUATION FORMS .....</b>	<b>I</b>
<b>GUIDE TO THE COMPILATION OF THE EVALUATION FORMS .....</b>	<b>1</b>
GENERALITY AND INITIAL SEGMENTATION .....	<i>1</i>
<i>Geomorphological Functionality.....</i>	<i>1</i>
CONTINUITY .....	<i>1</i>
<i>F1: Longitudinal continuity in sediment and wood flux.....</i>	<i>1</i>
<i>F2: Presence of a modern floodplain.....</i>	<i>2</i>
<i>F3: Hillslope – river corridor connectivity.....</i>	<i>2</i>
<i>F4: Processes of bank retreat.....</i>	<i>3</i>
<i>F5: Presence of a potentially erodible corridor.....</i>	<i>3</i>
MORPHOLOGY.....	<i>4</i>
<i>F6: Bed configuration – valley slope.....</i>	<i>4</i>
<i>F7: Forms and processes typical of the channel pattern.....</i>	<i>5</i>
<i>F8: Presence of typical fluvial forms in the alluvial plain.....</i>	<i>6</i>
<i>F9: Variability of the cross-section.....</i>	<i>6</i>
<i>F10: Structure of the channel bed.....</i>	<i>7</i>
<i>F11: Presence of in-channel large wood.....</i>	<i>8</i>
VEGETATION IN THE FLUVIAL CORRIDOR .....	<i>9</i>
<i>F12: Width of functional vegetation.....</i>	<i>9</i>

<i>F13: Linear extension of functional vegetation</i> .....	10
<i>Artificiality</i> .....	11
UPSTREAM ALTERATION OF LONGITUDINAL CONTINUITY .....	11
<i>A1: Upstream alteration of flows</i> .....	11
<i>A2: Upstream alteration of sediment discharges</i> .....	13
ALTERATION OF LONGITUDINAL CONTINUITY IN THE REACH.....	15
<i>A3: Alteration of flows in the reach</i> .....	15
<i>A4: Alteration of sediment discharge in the reach</i> .....	16
<i>A5: Crossing structures</i> .....	17
ALTERATION OF LATERAL CONTINUITY .....	17
<i>A6: Bank protections</i> .....	17
<i>A7: Artificial levees</i> .....	18
ALTERATION OF CHANNEL MORPHOLOGY AND/OR SUBSTRATE .....	18
<i>A8: Artificial changes of river course</i> .....	18
<i>A9: Other bed stabilization structures</i> .....	19
INTERVENTIONS OF MAINTENANCE AND REMOVAL .....	19
<i>A10: Sediment removal</i> .....	19
<i>A11: Wood removal</i> .....	20
<i>A12: Vegetation management</i> .....	21
<i>Channel Adjustments</i> .....	22
<i>CA1: Adjustments in channel pattern</i> .....	22
<i>CA2: Adjustments in channel width</i> .....	23
<i>CA3: Bed-level adjustments</i> .....	24
SCORES .....	25
SUB-INDICES .....	25
<b>APPENDIX 2 EVALUATION FORM FOR CONFINED CHANNELS .....</b>	<b>II</b>
<b>APPENDIX 3 EVALUATION FORM FOR PARTLY CONFINED OR UNCONFINED CHANNEL .....</b>	<b>III</b>
<b>APPENDIX 4 ILLUSTRATED GUIDE TO THE ANSWERS .....</b>	<b>(PUBLISHED SEPARATELY)</b>

## List of figures

<b>Figure 1.1</b> – General methodological framework illustrating the division in three phases and a list of the main aspects for each one. ....	5
<b>Figure 2.1</b> – Example of segmentation for the Cecina River (Central Italy). ....	12
<b>Figure 3.1</b> – Sentino stream along the Frasassi Gorge ( $MQI = 0.92$ : <i>Very good</i> ). ....	19
<b>Figure 3.2</b> – Tagliamento River near Turrída ( $MQI = 0.87$ : <i>Very good</i> ). ....	20
<b>Figure 3.3</b> – Cecina River near Casino di Terra ( $MQI = 0.78$ : <i>Good</i> ). ....	21
<b>Figure 3.4</b> – The Furkelbach (Furcia) Torrent in Val Pusteria ( $MQI = 0.46$ : <i>Poor</i> ). ....	22
<b>Figure 3.5</b> – Panaro River near Vignola ( $MQI = 0.40$ : <i>Poor</i> ). ....	23
<b>Figure 3.6</b> – Arno River in Florence ( $MQI = 0.11$ : <i>Very poor</i> ). ....	24
<b>Figure 3.7</b> – Gatria Torrent near Lasa ( $MQI = 0.04$ : <i>Very poor</i> ). ....	24

## **List of tables**

<b>Table 2.1</b> – Definition of the confinement classes.....	8
<b>Table 2.2</b> – Criteria and threshold values of indices or other distinctive characteristics for the morphological classification of partly confined and unconfined channels.....	9
<b>Table 3.1</b> – General framework of the indicators used to assess the morphological state.....	15
<b>Table 3.2</b> – List of indicators.....	17



## ***Introduction***

The Water Framework Directive (WFD) ([EUROPEAN COMMISSION, 2000](#)) introduces hydromorphology as one of the elements to be evaluated, besides water quality and biological aspects, in order to obtain an evaluation and classification of the stream ecological state. Notwithstanding the innovations of the WFD, some limitations are recognised, amongst which hydromorphology appears to be the component taken least into consideration to eventually compromise the achievement of the fundamental objectives of the directive.

Nowadays a full comprehension of the morphological aspects and parameters more strictly correlated to the ecological state of a stream are still missing, even though several efforts have recently been devoted to this issue (see for example: [KAIL & HERING, 2009](#); [WYŻGA et al., 2010](#); [GURNELL et al., 2009](#)). A wide consensus, however, exists on the fact that geomorphic processes of streams and their dynamic equilibrium conditions spontaneously promote habitat diversity and the functioning of aquatic and riparian ecosystems (e.g. [CLARKE et al., 2003](#); [PALMER et al., 2005](#)).

However, the approaches used up to now in most European countries tend to coincide with physical habitat assessment procedures (see for example the *RHS* in UK – [RAVEN et al., 1998](#)), which are suitable for defining the presence and diversity of physical habitats but which have not necessarily been developed to comply with the WFD requirements. As a consequence of these weaknesses, there is an increasing need for an approach based on the consideration and understanding of the geomorphological processes responsible for river functioning which can be used not only for a classification but also for supporting analyses of any interventions and impacts, and the design of mitigation measures. Some examples of new methods currently developed in Spain (*Indice Idro-Geomorfologico, IHG* – [OLLERO et al., 2007, 2011](#)) and in France (*SYRAH procedure* – [CHANDESRIS et al., 2008](#)), or the method proposed by [WYŻGA et al., 2010, 2012](#), are a step in this direction.

A new system has been developed for stream morphological assessment and classification at a national level with a series of the requisites previously detailed (adequate spatial scales, consideration of processes and trends of channel evolution, etc.) and which, at the same time, would be sufficiently simple and practical. The aim of this Guidebook is to illustrate the main characteristics of the method and to provide a concise guide for its application. More details on the scientific bases, characteristics, limitations and strengths of the method can be found in [RINALDI et al. 2011, 2013](#).

This new version (1.1) differs from the previous one (version 1) mainly because of several improvements in the English terminology.

*The Illustrated Guide To The Answers is part of the Guidebook and is published in a separated volume.*

## AUTHORS AND ACKNOWLEDGEMENTS

---

### Lead authors

Massimo RINALDI: *Dipartimento di Scienze della Terra, Università di Firenze*

Nicola SURIAN: *Dipartimento di Geoscienze, Università di Padova*

Francesco COMITI: *Facoltà di Scienze e Tecnologie, Libera Università di Bolzano*

Martina BUSSETTINI: *Istituto Superiore per la Protezione e la Ricerca Ambientale (ISPRA), Roma*

### Acknowledgements

#### CONTRIBUTORS

- Phase of methodological definition:

Luisa Pellegrini (*Università di Pavia*), Andrea Colombo, Federica Filippi e Tommaso Simonelli (*Autorità di Bacino del Fiume Po*);

- ISPRA contributors:

- Giovanni Braca, Barbara Lastoria, Francesca Piva, Saverio Venturelli;

- Testing phase:

- P. Aucelli, V. Benacchio, M. Ceddia, C. Cencetti, A. Colombo, S. De Gasperi, P. De Rosa, A. Dignani, G. Duci, F. Filippi, A. Fredduzzi, M. Micheli, E. Morri, O. Nesci, L. Pellegrini, C. Roskopf, R. Santolini, V. Scorpio, T. Simonelli, D. Sogni, S. Teodori, V. Tiberi, F. Troiani, C. Zuri.

- Final revision of the manuscript:

- B. Lastoria, C. Zuri, B. Golfieri.

- Illustrated Guide To The Answers:

- B. Lastoria, C. Zuri.

Special thanks to Barbara Lastoria, for the editing and layout of the Guidebook and of the Illustrated Guide, and for the implementation of *xls* forms.

## CHAPTER 1 METHODOLOGICAL FRAMEWORK

### 1.1 Review of existing methods for hydromorphological evaluation

The term “*hydromorphology*” was introduced by the WFD ([EUROPEAN COMMISSION, 2000](#)), and includes the consideration of: (a) the extent of modification to the flow regime; (b) the extent to which water flow, sediment transport and the migration of biota are impacted by artificial barriers; (c) the extent to which the morphology of the river channel has been modified, including constraints to the free movement of a river across its floodplain ([SEAR \*et al.\*, 2003](#)). Following the WFD, and according to definitions adopted by various authors (e.g. [CEN, 2002](#); [NEWSON & LARGE, 2006](#); [MAAS & BROOKES, 2009](#); [VOGEL, 2011](#)), hydromorphology can be defined as the discipline that, by integrating hydrology and fluvial geomorphology, aims to study fluvial form and processes, their interactions with human impact, and the consequent implications on ecological processes.

Over recent years, several methods have been developed in many countries that are based on a census of physical habitats and diversity of fluvial forms, also known as physical habitat assessment or river habitat survey procedures. Examples of those adopted in Europe and included in this category are as follows : the *River Habitat Survey (RHS)* ([RAVEN \*et al.\*, 1997](#)), the *National Physical Habitat Index* (National Environmental Research Institute) in Denmark, the *Physical S.E.Q.* ([AGENCES DE L’EAU, 1998](#)) in France, and the *Caravaggio* ([BUFFAGNI \*et al.\*, 2005](#)), the latter deriving from the RHS and adapted to the Italian and Mediterranean context. However, many of these methods were not originally developed to satisfy the requirements of the WFD. Among the main limitations of these methodologies when used for understanding the physical processes and causes of river alterations, we note the following: (a) they make use of a “form-based approach” and do not include considerations on processes and trends of adjustment; (b) as a consequence, they define “reference conditions” in terms of forms (presence and number of given features) making use of “reference reaches” in present conditions (although they can be partially altered); (c) the spatial scale of investigation (coinciding with the “site”, with a length to the order of some hundreds of meters) is inadequate for a real diagnosis and comprehension of morphological problems, as the physical degradation of a site is generally the consequence of processes and causes on a wider scale; (d) these procedures are not appropriate for an analysis of interventions and impacts aimed at the design of restoration actions, as required by the WFD. For example, let us consider a channel reach subject to intense adjustments (incision, narrowing) during the last decades, as very frequently occurred along many Italian rivers (e.g. [SURIAN & RINALDI, 2003](#); [SURIAN \*et al.\*, 2009a](#)). By using the *RHS* method, a census of present forms (i.e. bars, riffles, pools) and their number is carried out, and so the result could be relatively good (e.g. a reach changing from a braided to a single-thread morphology, but still maintaining a diversity of forms), neglecting the alterations of processes related to the channel adjustments (e.g. disconnection with floodplain, loss of aquatic and riparian habitats, etc.). Furthermore, the *RHS* value could vary significantly depending on the site of application (length of 500 m) that could reflect local conditions.

In Italy, besides the *Caravaggio*, the *IFF* is certainly worth mentioning (*Indice di Funzionalità Fluviale*: [SILIGARDI et al., 2007](#)), which evaluates the overall ecological functionality of a river reach. This, however, was not developed to evaluate the degree of deviation from a given reference condition, neither does it include hydromorphological aspects in any detail. Recently, a methodological framework of integrated assessment of the ecological status was proposed (*FLEA: Fluvial Ecosystem Assessment*) ([NARDINI et al., 2008](#)), which is specific for the requirements of the WFD and also includes the elements of hydromorphological quality.

Recently, there has been an increasing development of new methods denoting a stronger geomorphological component, with an increasing consideration of physical processes, and the employment of sufficiently wide temporal scales and additional methods (remote sensing, GIS) integrated into field surveys. In this context, new methods developed in Spain (*Indice Idro-Geomorfologico, IHG*: [OLLERO et al., 2007](#)) and in France (*SYRAH: Système Relationnel d’Audit de l’Hydromorphologie des Cours d’Eau*, [CHANDESRIIS et al., 2008](#)) are of particular note.

Finally, it is useful to mention some other methods existing in other countries not directly aimed at the application of the WFD but to stream evaluation and geomorphological analysis for management and restoration purposes. The *Fluvial Audit* ([EA, 1998](#)) can be included in this category, being a structured procedure aimed at the definition of management strategies and/or interventions. Another particularly significant example is that of the *River Styles Framework* (Australia), an organic methodological procedure for the detailed geomorphological analysis of a fluvial system developed by [BRIERLEY & FRYIRS \(2005\)](#).

Although the value of these methods is acknowledged, none of them was considered to fully satisfy a series of conditions for the WFD application to Italian streams. These conditions can be summarized as follows: (i) the method should include a quantitative evaluation procedure to classify the stream morphological quality; (ii) it should be applicable by competent authorities (i.e., public agencies, river basin managers); and (iii) it should be suitable for the Italian context, i.e., cover the full range of physical conditions, morphological types, degree of artificial alterations, and amount of channel adjustments. Therefore, the development of a new specific method for Italian streams was considered necessary. To this aim, we refer to recent research in the fields of fluvial geomorphology and dynamics carried out on a national scale during the last years, by which the procedures of analysis of channel adjustments have been improved and channel evolution conceptual models have been developed (see for example [RINALDI, 2008](#); [RINALDI et al., 2008](#); [SURIAN, 2009a](#)).

## 1.2 Overall structure of the method

The definition of the stream Morphological Quality Index (*MQI*) lies in a wider methodological framework named *IDRAIM (stream hydromorphological evaluation, analysis and monitoring system)* aimed at an integrated analysis of morphological quality and channel dynamics hazards aimed at a harmonized implementation of both the WFD and the EU Floods Directive ([EUROPEAN COMMISSION, 2007](#)).

The general procedure of classification and monitoring is based, according to the WFD requirements, on evaluating the deviation of present conditions from a

given reference state. The reference conditions approach is a well established methodology for the assessment of freshwater ecosystems (e.g. [BAILEY et al., 2004](#)). However, definition of a reference state for hydromorphology is problematic. In the last three decades, several studies have dealt with the issue of defining the geomorphic reference conditions of streams (e.g. [BINDER et al., 1983](#); [KERN, 1992](#); [RHOADS et al., 1999](#); [JUNGWIRTH et al., 2002](#), [PALMER et al., 2005](#); [BRIERLEY & FRYIRS, 2005](#); [DUFOUR & PIÉGAY, 2009](#)). Those studies show that there is still some debate on this topic and a common vision of reference conditions is lacking. Furthermore, a clear distinction should be made whether reference conditions are used to assess deviation from a natural condition and/or to define goals for river restoration. On the other hand, some concepts (e.g., guiding image, [PALMER et al., 2005](#); evolutionary trajectory, [BRIERLEY & FRYIRS, 2005](#)) are largely accepted, meaning that a common ground has, in fact, been established.

The scientific community nowadays agrees to renounce using the past or a “pristine” completely undisturbed state as reference condition. This is because, besides being extremely difficult to define, it would be associated with watershed conditions completely different from the present. Recently, new concepts and approaches have been introduced, among which the use of a “guiding image” coinciding with a condition of “dynamic equilibrium” ([CLARKE et al., 2003](#); [PALMER et al., 2005](#)), or the consideration of “reference processes” or “reference process-form interactions” ([BERTOLDI et al., 2009](#)) rather than “reference forms”. Furthermore the comprehension of the fluvial system evolutive trends (in some cases also indicated as “trajectory”: [BRIERLEY & FRYIRS, 2005](#); [DUFOUR & PIÉGAY, 2009](#)) is important not in the perspective of the recovery to a past condition but to ensure that future actions would be compatible with the trends of channel adjustment. Moreover, a clear distinction should be made whether reference conditions are used to assess deviation from a natural condition (e.g., “visionary leitbild”) and/or to define goals for river restoration (e.g., “practical leitbild”, [JUNGWIRTH et al., 2002](#)).

In the definition of reference conditions for the *MQI*, we have taken into account (i) several of the concepts described above (in particular the concept of evolutionary trajectory); (ii) the requirements of the WFD; and (iii) the specific context of Italian streams that have been affected by humans for a long period of time (e.g., [BILLI et al., 1997](#); [SURIAN & RINALDI, 2003](#); [COMITI, 2012](#)). According to the WFD, the point of reference is given by ‘undisturbed’ conditions showing no or only “very minor” human impacts ([EUROPEAN COMMISSION, 2003](#)). As a consequence, reference conditions for the *MQI* were defined in order to measure the deviation from undisturbed or only very slightly disturbed geomorphic processes. The reference conditions for a given reach are defined considering three components, i.e., channel forms and processes, artificiality and channel adjustments. As for the first component, the reference conditions are given by the channel form and processes that are expected for the morphological typology under examination. For artificiality, the reference is given by the absence or only slight presence of human intervention in terms of flow and sediment regulation, hydraulic structures, and river maintenance activities. If elements of artificiality exist, they should produce only small negligible effects on the channel morphology and river processes. Finally, major channel adjustments caused by human factors (i.e., incision or aggradation) should not have occurred.

Starting from these premises, the evaluation of present conditions and future monitoring are based on an integrated approach, making a synergic use of the two

main methodologies employed in the geomorphological study of rivers: **field survey and interpretation**, and **remote sensing and GIS analyses**.

Regarding the **spatial scales**, a hierarchical nested approach is adopted ([BRIERLEY & FRYIRS, 2005](#)), considering the following spatial units of decreasing hierarchy: (1) CATCHMENT; (2) PHYSIOGRAPHIC UNITS AND FLUVIAL SEGMENTS (the latter having lengths to the order of tens of km); (3) STREAM REACHES (with lengths normally to the order of 1÷5 km), corresponding to the basic unit for remote sensing and GIS analyses; (4) SITES, consisting of a representative sub-reach including the typical range of geomorphic units characterizing the stream morphology, and corresponding to the basic unit for field survey; (5) SEDIMENTARY UNITS, useful for measurements of detail (for example grain size analysis of bed sediments).

The overall procedure of morphological analysis includes ([Figure 1.1](#)):

- (1) **General setting and segmentation**: the main physical aspects determining the configuration and characteristics of the hydrographic network are identified, and a first delineation of the rivers in segments and reaches is carried out.
- (2) **Assessment of morphological conditions**: the morphological state of the river reaches previously defined is evaluated in terms of present conditions (functionality, artificiality), and recent channel changes.
- (3) **Monitoring**: for selected reaches, a series of indicators and parameters are measured to evaluate if the morphological quality of the stream remains unaltered or is changing (this part is under development within the IDRAIM protocol).

For the morphological assessment, coherently with [CEN \(2002\)](#) standards and WFD requirements, the following aspects are considered: (a) *longitudinal and lateral continuity*; (b) *channel pattern*; (c) *cross-section configuration*; (d) *bed structure and substrate*; (e) *vegetation in the riparian corridor*.

Then, the following three components of morphological analysis are considered:

- (1) **Geomorphological functionality**: based on the observation of forms and processes in the present conditions, and their comparison with forms and processes normally associated with that river typology.
- (2) **Artificiality**: presence, frequency and continuity of artificial structures and interventions.
- (3) **Channel adjustments**: recent morphological variations over a temporal frame of about 100 years (with particular reference, for the planimetric changes, to the last 50÷60 years).

Following this framework, the **reference conditions** for a study reach can be identified with the following: (i) the full functionality of geomorphic processes along the reach; (ii) the absence or negligible presence of artificial elements along the reach and to some extent (in terms of flow and sediment fluxes) in the catchment; and (iii) the absence of significant channel adjustments (configuration, width, bed elevation) over a temporal frame of about 100 years.



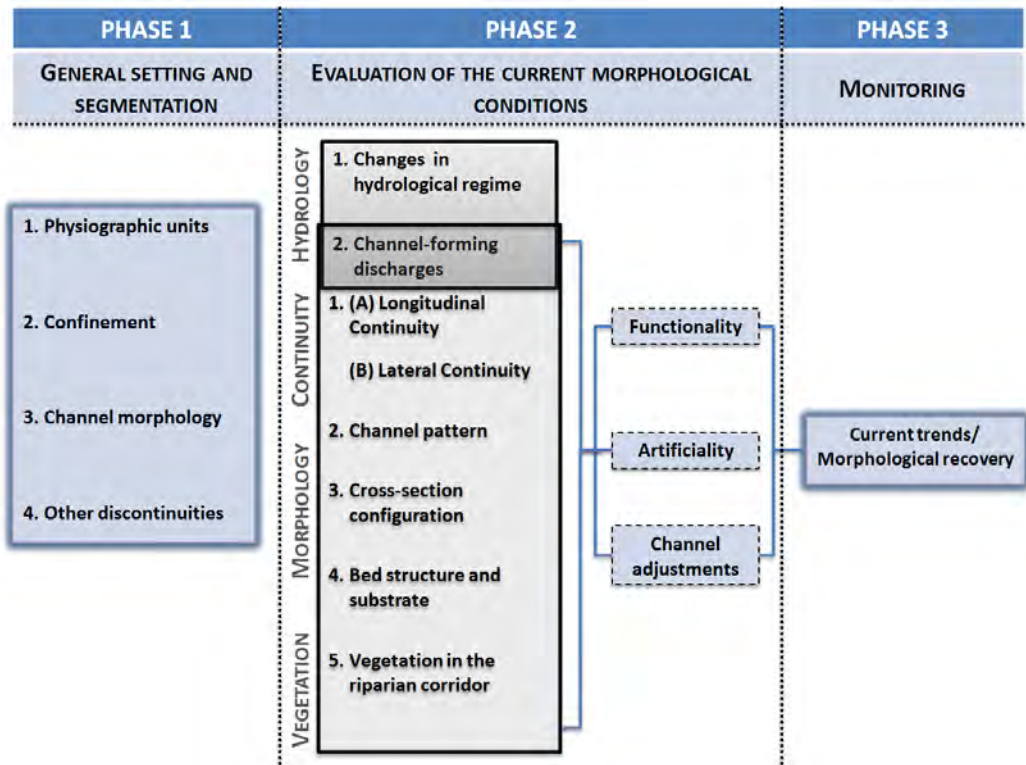


Figure 1.1 – General methodological framework illustrating the division in three phases and a list of the main aspects for each one.

As schematically represented in [Figure 1.1](#), the morphological analysis described here only includes those hydrological aspects related to alterations of channel-forming discharges, i.e. those with more significant effects on morphological processes. The overall changes in the hydrologic regime (with particular emphasis on low discharges) are analysed separately and described in [ISPRA \(2009\)](#). In short, the analysis of the hydrological regime is carried out on a stream section on the basis of a *Hydrological Regime Alteration Index (IARI)* that provides a measure of the deviation between the observed hydrological regime and the natural regime in the absence of human intervention.. The index is based on the thirty-three *Indicators of Hydrologic Alteration (IHA)* ([RICHTER et al. 1996](#); [POFF et al., 1997](#)), providing information on possible alterations of five components of the hydrological regime (i.e., magnitude, frequency, timing, duration, rate of change). Using at least twenty years of monthly streamflow data, each of these metrics are referred against an unimpacted flow series. The integration of morphological and hydrological aspects allows for a complete characterization and classification of stream hydromorphology.

## CHAPTER 2 GENERAL SETTING AND SEGMENTATION

### 2.1 General framework

The first phase of the evaluation procedure provides a general setting of the river's physical conditions and for a first classification in relatively homogeneous reaches, defined as sections of river along which present boundary conditions are sufficiently uniform (i.e., with no significant changes in valley setting, channel slope, imposed flow and sediment load; [BRIERLEY & FRYIRS, 2005](#)). No attempts are made in this phase to characterize the reaches on the basis of their “natural” or “reference” conditions, as is the case in some physical habitat assessment method. The segmentation is based on existing information (e.g., topographical and geological data) and remote sensing data analyzed by GIS, and represents a guided, sufficiently flexible, and adaptive procedure rather than a rigid set of rules. Recent developments in automated spatial disaggregation and discretization of fluvial features (e.g., [ALBER AND PIÉGAY, 2011](#)) could potentially be implemented for some steps of the procedure.

The phase of general setting and segmentation is divided into the following steps:

- (1) **General setting and identification of the physiographic units.** A first division of the watershed into macro-areas (physiographic units) and into corresponding macro-reaches (segments) is carried out.
- (2) **Definition of the confinement degree.** River confinement (confined, partly confined, unconfined) is defined more in detail, obtaining a preliminary subdivision of segments into reaches.
- (3) **Definition of channel morphology.** Channel morphology is then defined, using different criteria for confined and partly unconfined river reaches.
- (4) **Division into reaches.** The final definition of reaches takes into account, besides confinement and channel morphology, additional factors such as hydrologic discontinuities, channel slope, artificiality, alluvial plain size, etc.

### 2.2 STEP 1: General setting and physiographic units

**Aim:** to obtain a general setting of the physiographic context and carry out a first division into macro-areas (physiographic units) and macro-reaches (segments).

**Information/data necessary:** watershed area, dominant lithologies, climate and hydrologic regime, land use, longitudinal profiles.

**Methods:** consultation of geological, geomorphological, and land use maps; existing studies; hydrological data collection and analysis; Remote sensing /GIS; field reconnaissance.

**Results:** division of the catchment into physiographic units and of the rivers into segments. The latter are macroreaches defined by the intersection of channel network with physiographic units, and by possible additional factors (e.g., macrodifferences in valley setting).

**Description:** based on the collection and consultation of existing materials, the main **physiographic units** in the catchment are identified (these correspond to the *landscape units* of according to [BRIERLEY & FRYIRS, 2005](#)). They can be included in two general **physiographic areas**: (1) *hills – mountains*; (2) *plains*.



In Italy, the following main physiographic units can be identified:

- (A) *Alpine and Po plain sectors*: (1) Alpine mountain areas; (2) Pre-alpine mountain and hilly areas; (3) High plains; (4) Low plains.
- (B) *Apenninic and island sectors*: (1) Mountain Apenninic areas; (2) Hilly Apenninic areas; (3) Intermontane Apenninic plains; (4) Inner reliefs; (5) High plains; (6) Low plains.

The portions of streams included within a physiographic unit are defined as **segments**. However, within a same physiographic unit, a stream may be further divided into more segments depending on the macro-characteristics of the valley (e.g. main changes of direction due to tectonic controls) and/or on relevant changes in bed slope from the longitudinal profile (particularly in the cases of mountain confined streams). Segments normally have a length to the order of some km (mountain areas) and up to tens of km (lowland areas).

### 2.3 STEP 2: Confinement

**Aim**: to define in more detail the confinement conditions, and to sub-divide segments based on confinement parameters.

**Information/data necessary**: width of the alluvial plain, confinement degree, confinement index.

**Methods**: Remote sensing /GIS; topographic and geological maps.

**Results**: division of segments based on confinement parameters.

**Description**: to analyze the confinement in detail, two parameters are used: (1) confinement degree; (2) confinement index.

- (1) **Confinement degree**. This expresses the lateral confinement in a longitudinal sense, independently from the width of the alluvial plain. It corresponds to the percentage of banks directly not in contact with the alluvial plain but with hillslopes or *ancient terraces*, over the total length of the two banks. As a practical rule, the **alluvial plain** (i.e. the maximum width of the fluvial area of investigation) is normally identified on geological maps with “present alluvium” or “Holocene alluvium”. However, an altimetric criterion can be more necessary than a rigid chronological criterion: if the Holocene alluvium is terraced, only some meters of it can be included in the alluvial plain (i.e. a Holocene terrace of 10÷15 m is not part of the alluvial plain). Vice versa, a Pleistocene terrace separated by a difference in level of few meters can be considered part of the alluvial plain, except when the material is strongly cemented. In any case, terraces delimiting the alluvial plain are ancient ones: *recent terraces* generated by channel bed incision during the last 100÷200 years, as very frequently occurred in Italy, for the purpose of the confinement are part of the alluvial plain. According to [BRIERLEY & FRYIRS \(2005\)](#), three cases can be distinguished based on the confinement degree:
- **Confined channels**: more than 90% of the banks are directly in contact with hillslopes or ancient terraces. The alluvial plain is limited to some isolated pockets (< 10%).
  - **Partly confined channels**: banks are in contact with the alluvial plain for a length from 10 to 90%.

- **Unconfined channels:** less than 10% of the bank length is in contact with hillslopes or ancient terraces. In fact, the alluvial plain is nearly continuous, and the river has no lateral constraints to its mobility.

In some cases, the confinement degree previously defined is not sufficient to appropriately define the confinement characteristics. In fact, it is not infrequent (particularly in mountain areas) to have streams with a very narrow (some meters) but quite continuous plain on the sides before entering in contact with the hillslopes. According to the previous definitions, such streams may fall into the categories of partly confined or unconfined, while it is more appropriate for the aims of this method to consider them as confined. Therefore, an additional parameter is used here which takes into account the confinement in a transversal sense (i.e. considering the width of the alluvial plain), defined as follows.

- (2) **Confinement index.** It is defined here as the ratio between the alluvial plain width (including the channel) and the channel width. Consequently, the index is inversely proportional to the confinement: a minimum value of 1 indicates that the alluvial plain and channel coincide (i.e. there is no alluvial plain), while the index increases when the alluvial plain increases its width relatively to the channel width. Based on the confinement index, the following classes are defined:
- *high confinement:* index ranging from 1 to 1.5;
  - *medium confinement:* index ranging from 1.5 to  $n$ ;
  - *low confinement:* index higher than  $n$ ;

where  $n = 5$  for single-thread channels (including sinuous with alternate bars), and  $n = 2$  for multi-thread or transitional morphologies. The highest value for single-thread channels reflects the fact that a sufficiently wide plain is needed for these channels to develop completely free meanders, equal to about 4.5 times the channel width ([LEOPOLD & WOLMAN, 1957](#)).

Based on the confinement degree and confinement index, it is possible to define the three final classes of confinement, according to [Table 2.1](#).

**Table 2.1** – Definition of the confinement classes.

CONFINEMENT CLASS	DESCRIPTION
<b><i>Confined</i></b>	All cases with confinement degree > 90%
	Confinement degree from 10% to 90% and confinement index $\leq 1.5$
<b><i>Partly confined</i></b>	Confinement degree from 10% to 90% and confinement index > 1.5
	Confinement degree < 10% and confinement index $\leq n$
<b><i>Unconfined</i></b>	Confinement degree < 10% and confinement index > $n$

## 2.4 STEP 3: Channel morphologies

**Aim:** to define and classify channel morphologies.

**Information/data necessary:** confinement, sinuosity index, braiding index, anastomosing index (bed configuration).

**Methods:** Remote sensing /GIS; field reconnaissance.

**Results:** division of segments based on channel morphology.

**Description:** criteria for the classification of channel morphology are slightly differentiated for partly- unconfined channels and confined channels.

#### 2.4.1 *Classification of partly confined and unconfined channels*

Partly confined and unconfined channels are classified based on their planimetric characteristics, therefore using the following classical indices: (1) *sinuosity index*; (2) *braiding index*; (3) *anastomosing index*.

- **SINUOSITY INDEX ( $S_i$ )** is defined as the ratio between the distance measured along the channel and the distance measured following the direction of the overall planimetric course.
- **BRAIDING INDEX ( $B_i$ )** is defined as the number of active channels separated by bars.
- **ANASTOMOSING INDEX ( $A_i$ )** is defined as the number of active channels separated by vegetated islands.

Based on these parameters and, in some cases, on additional qualitative features (see Table 2), the following seven channel morphologies included in three main categories are defined:

- *Single-thread channels*: straight, sinuous, meandering
- *Transitional channels*: sinuous with alternate bars, wandering
- *Multi-thread channels*: braided, anastomosed.

In [Table 2.2](#) the criteria and threshold values of the indices are reported. These have been defined according to the existing literature (e.g. [LEOPOLD & WOLMAN, 1957](#); [SCHUMM, 1977](#); [BRICE, 1984](#); [CHURCH, 1992](#); [THORNE, 1997](#); etc.), but also taking into account specific experience relative to the Italian context (e.g. [RINALDI, 2003](#); [SURIAN & RINALDI, 2003](#); [SURIAN et al., 2009b](#)). For example, sinuous with alternate bars (or “*pseudomeandering*”: [BARTHOLDY & BILLI, 2002](#); [RINALDI, 2003](#)) are here considered as a separate morphology, although in the following phase of assessment they are often grouped with single-thread channels for practical reasons, while wandering are grouped with multi-thread channels.

**Table 2.2** – Criteria and threshold values of indices or other distinctive characteristics for the morphological classification of partly confined and unconfined channels.

TYOLOGY	SINUOSITY INDEX	BRAIDING INDEX	ANASTOMOSING INDEX
Straight ( <i>ST</i> )	$1 \leq S_i < 1.05$	$1 \div 1.5$ (normally equal or close to 1)	$1 \div 1.5$ (normally equal or close to 1)
Sinuuous ( <i>S</i> )	$1.05 \leq S_i < 1.5$	$1 \div 1.5$ (normally equal or close to 1)	$1 \div 1.5$ (normally equal or close to 1)
Meandering ( <i>M</i> )	$\geq 1.5$	$1 \div 1.5$ (normally equal or close to 1)	$1 \div 1.5$ (normally equal or close to 1)
Sinuuous with alternate bars ( <i>SAB</i> )	$< 1.5$	Close to 1	Close to 1
Wandering ( <i>W</i> )	$< 1.5$	$1 < I_i < 1.5$	$1 < I_a < 1.5$
Braided ( <i>B</i> )	Any (normally low)	$\geq 1.5$	$< 1.5$

TYOLOGY	SINUOSITY INDEX	BRAIDING INDEX	ANASTOMOSING INDEX
Anastomosed ( <i>A</i> )	any (even > 1.5)	1÷1.5	≥ 1.5
<i>Other distinctive characteristics</i>			
Straight ( <i>ST</i> ) or sinuous ( <i>S</i> )	Compared to <i>SAB/W</i> : discontinuous (or absent) side bars (length of side bars < 80% of reach length)		
Sinuous with alternate bars ( <i>SAB</i> )	Compared to <i>ST/S</i> : nearly continuous presence of side bars (length of side bars normally > 80%). Compared to <i>W</i> : relatively narrower channel; absence (or localized presence) of braiding and anastomosing.		
Wandering ( <i>W</i> )	Compared to <i>ST/S</i> : nearly continuous presence of side bars (length of side bars normally > 80%). Compared to <i>SAB</i> : relatively wider channel; significant presence of braiding and/or anastomosing phenomena.		

### 2.4.2 Classification of confined channels

Confined channels are classified, at a first level, based on the same criteria used for partly- and unconfined channels. The main difference is that the sinuosity index is not used, as it is not a significant parameter in distinguishing channel morphologies, given that the planimetric configuration of a single-thread confined channel is controlled by the hillslopes. Therefore, all single-thread morphologies (including transitional sinuous with alternate bars) are not further classified. This results in four possible morphologies, divided in two main categories:

- *Confined single-thread* (including sinuous with alternate bars);
- *Confined multi-thread / Wandering*: braided, anastomosed, wandering.

A *second level of classification* of confined channels is based on bed configuration. This level is not necessary for the segmentation, but additional information on bed configuration is useful for channel characterization and as an indicator in the following phase of morphological assessment. According to existing literature (e.g. [MONTGOMERY & BUFFINGTON, 1997](#); [WOHL, 2000](#); [LENZI et al., 2000](#); etc.), the following bed morphologies are distinguished:

- *Bedrock channels*;
- *Colluvial channels*;
- *Mobile bed*: cascade/step pool, plane bed, riffle pool, dune ripple;
- *Artificial bed*.

## 2.5 STEP 4: Other discontinuities

**Aim**: to finalize the segmentation into relatively homogeneous reaches accounting also for additional factors.

**Information/data necessary**: hydrologic discontinuities (tributaries, dams), artificiality, width of alluvial plain, channel width, longitudinal profile.

**Methods**: Remote sensing/GIS; longitudinal profile by topographic maps; field reconnaissance.

**Results**: segments are divided into reaches that are the elementary units for the following morphological assessment.

**Description**: the following additional aspects are considered in this step as criteria for a further division into channel reaches.

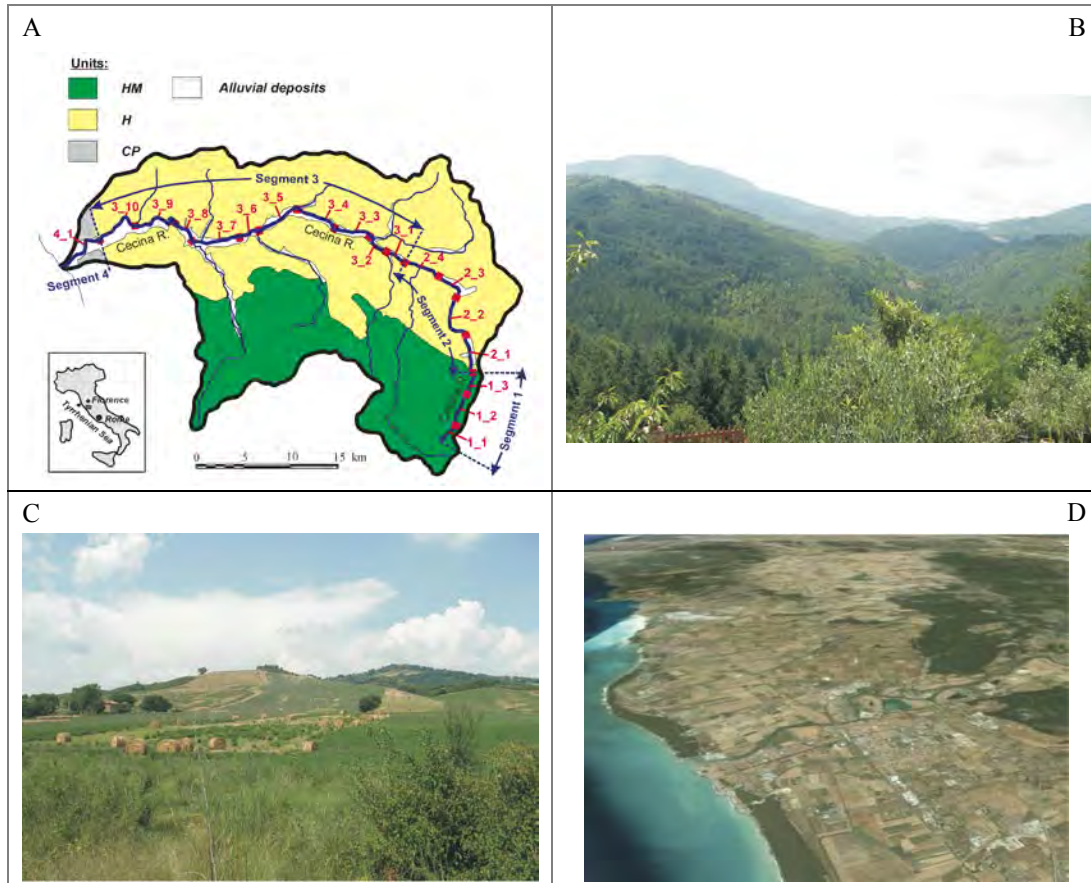
- ***Discontinuities in bed slope***. This is particularly important in the case of confined channels where the morphology is not a sufficient criterion in many cases to finalize the segmentation.

- **Natural or artificial hydrological discontinuities.** Tributaries determining significant changes in discharges or sediment transport can be considered. Artificial discontinuities are mainly identified with **dams** that necessarily correspond to a limit between reaches. Similarly, **check dams** or diversion structures of relevant sizes are normally considered as a limit of the reach, excluding the cases of a sequence of check dams that can be included in the same reach (if their distance is small relatively to the channel width).
- **Artificiality.** Normally, the segmentation is quite independent from artificial elements, being based on physical characteristics. An exception (besides the presence of dams or other transversal structures described in the previous point) may be the case of a portion of stream with a very high degree of artificiality, well distinguished from its upstream and downstream reaches. An example can be a river crossing an urban area, with completely fixed banks and artificial levees, or a mountain stream with a sufficiently long portion with bed revetments and/or a sequence of consolidation check dams.
- **Changes in width of the alluvial plain and/or confinement index:** in some cases, this can be considered as an additional criterion.
- **Changes in channel width:** marked variations in channel width can be an additional criterion.
- **Changes in sediment size:** cases of a considerable and sudden change in sediment size, e.g. a passage from gravel-bed to sand-bed, can be considered a criterion of separation in different reaches.

## 2.6 Example of segmentation

As an example of initial classification, the case of the Cecina River (Tuscany) is illustrated in [Figure 2.1](#), where the physiographic units, river segments and reaches are reported. The watershed is divided into three physiographic units: (1) hilly – mountainous unit (*HM*): this is a mainly hilly zone but with portions up to 1,000 m a.s.l., included in the inner Apenninic reliefs (“Metalliferous hills”), with a substrate predominantly composed of sedimentary rocks of the Ligurian and Tuscan units, with a significant presence of magmatic intrusive rocks; (2) hilly unit (*H*): this includes a wide area occupying most of the watershed, predominantly characterized by soft rocks of Miocene and Pliocene, and Quaternary marine and fluvial deposits; (3) coastal plain unit (*CP*): this is limited to about the last 4 km of the Cecina River, and is characterized by recent alluvial deposits and coastal dunes, absence of confinement, and low gradients. From the intersection of the physiographic units with the Cecina river course, a first division into 3 segments is obtained. However, the portion of river included in the hilly unit is further divided into two segments based on the confinement: segment 2 is an alternation of partly confined and confined reaches; segment 3 is characterized by the continuous presence of alluvial deposits and, as a consequence, only by partly confined -unconfined reaches. The further division into reaches accounts for the differences in channel morphology and other elements of discontinuity. The result is that the river is divided into a total of 18 reaches (on a total length of the river of about 80 km, implying that the reaches have a mean length of 4.45 km), with the codes of each reach defined in increasing order for each segment (as reported in [Figure 2.1](#)).





**Figure 2.1** – Example of segmentation for the Cecina River (Central Italy). (*HM*): Hilly – Mountainous unit; (*H*): Hilly unit; (*CP*): Coastal Plain unit.

## 2.7 Other available data and information

To conclude the general setting and segmentation phase, a further series of data/information can be collected, when available, concerning the following aspects.

- **Drainage area.** The drainage area of the watershed at the closure of a given reach is useful for some indicators in the following morphological assessment.
- **Sediment size.** Measurements of sediment size are not strictly required in the following phase of assessment. However, this information is very useful when it is available (e.g. from previous studies).
- **Water discharges.** In this phase, it is useful to identify all gauging stations in the catchment with a series of discharges over a sufficiently long time, and to obtain the main representative discharges, such as the mean annual daily discharge,  $Q_{1.5}$ , and discharges with higher return intervals.
- **Sediment discharges.** Although this type of information is difficult to obtain, existing estimations or measurements of sediment transport or sediment budgets are very useful when available (e.g. from previous projects or scientific literature).
- **Alterations of water and sediment discharges in the catchment.** It is already helpful at this stage to carry out a complete collection of available

information and data on the possible alterations of water and sediment discharges. This will be needed for the definition of some indicators (*A1* and *A2*) in the following phase. It is important to know the existence and position of the main structures of interception of sediment transport (dams, check dams, weirs, etc.), as well as the interventions of the possible alteration of water discharges (dams, diversions, spillways, retention basins, etc.). It is also important to collect information about the use of some of these interventions from the agencies in charge of their management and maintenance (e.g. use of a dam for hydropower or for a reduction in peak discharges, changes in discharge for given return intervals, existence of measures for sediment release, etc.). Possibly, a GIS-based map with identification of the main structures potentially altering sediment and water discharges and relative information should be produced.

## CHAPTER 3 EVALUATION OF MORPHOLOGICAL CONDITIONS

### 3.1 Evaluation procedure

The assessment of present morphological conditions is applied to any reach defined in the previous phase by analyzing the following aspects, consistently with [CEN \(2002\)](#) standards and WFD requirements: (1) continuity of river processes, including (a) longitudinal continuity, and (b) lateral continuity; (2) channel morphological conditions, including (a) channel pattern, (b) cross-section configuration, and (c) bed structure and substrate; (3) vegetation. These aspects are analyzed according to three components: (1) geomorphological functionality; (2) artificiality; (3) channel adjustments.

Indicators of **geomorphic functionality** evaluate whether or not the processes and related forms responsible for the correct functioning of the river are prevented or altered by artificial elements or by channel adjustments. These processes include, among others, the continuity of sediment and wood flux, bank erosion, periodic inundation of the floodplain, morphological diversity in planform and cross section, the mobility of bed sediment, and processes of interaction with vegetation.

Indicators of **artificiality** assess the presence and frequency of artificial elements or interventions as such, independently of their effects on processes. Therefore, artificial elements are accounted for in a twofold way, i.e., based on their function or their effects as noted by the functionality indicators (i.e., as elements preventing natural processes, for example, a bank protection that prevents lateral erosion) and based on their presence and density (i.e., artificial elements as such that are not expected in unaltered rivers, independently of their effects).

Indicators of **channel adjustments** focus on relatively recent morphological changes (i.e., about the last 100 years) that are indicative of a systemic instability related to human factors. In fact, human-induced disturbances greatly compress timescales for channel adjustments (e.g., [RINALDI & SIMON, 1998](#); [SIMON & RINALDI, 2006](#)). However, channel changes that are not clearly related to human disturbances that occurred during this temporal frame (e.g., changes related to large floods) could be recognised and not considered as alteration. To this end, the information relative to the indicators of artificiality is useful (e.g., intense sediment removal activity or the presence of dams in the watershed that could be interpreted as causes of intense channel adjustments). Historical river conditions (past 100 years) are not considered as a reference state but as a comparative situation to infer whether channel adjustments occurred over the last decades.

The complete set of indicators can be schematically represented by crossing the previous aspects (in rows) and components (in columns) ([Table 3.1](#)), while the list of indicators is reported in [Table 3.2](#).



**Table 3.1** – General framework of the indicators used to assess the morphological state. Artificiality: the indicators having a secondary impact on the morphological aspect indicated in the row are in parentheses.

		FUNCTIONALITY	ARTIFICIALITY	CHANNEL ADJUSTMENTS
CONTINUITY	<i>Longitudinal</i>	<i>F1</i>	<i>A1, A2, A3, A4, A5</i>	
	<i>Lateral</i>	<i>F2, F3, F4, F5</i>	<i>A6, A7</i>	
MORPHOLOGY	<i>Channel pattern</i>	<i>F6, F7, F8</i>	<i>A8 (A6)</i>	<i>CA1</i>
	<i>Cross-section</i>	<i>F9</i>	<i>(A4, A9, A10)</i>	<i>CA2, CA3</i>
	<i>Bed substrate</i>	<i>F10, F11</i>	<i>A9, A10, A11</i>	
VEGETATION		<i>F12, F13</i>	<i>A12</i>	

All indicators are investigated by using specific **evaluation forms** that allow for a guided analysis using an integrated approach of remote sensing / GIS and field surveys. The evaluation forms are presented in two formats: (a) “field evaluation forms” (hard copy are in this Guidebook); (b) “electronic evaluation forms” (Excel format, that can be downloaded from the web page <http://www.sintai.sinanet.apat.it/view/index.faces>), to be compiled after the field survey.

A number of indicators are used, where each indicator is evaluated by one or more quantitative or qualitative variables (for some indicators, particularly for functionality, interpretative observations rather than quantitative parameters are used).

During the segmentation phase, three classes based on channel confinement were differentiated: (i) confined channels; (ii) partly confined channels; and (iii) unconfined channels. At this stage, instead of using a different evaluation form for each of these three classes, only two procedures were developed given that the same indicators can be used for partly confined and unconfined channels. This implies that some differences exist in the number and type of indicators for each of these two assessment procedures, as some of the indicators are specific for confined channels while they are not suitable for partly confined and unconfined, and vice versa. For example, presence and extension of a modern floodplain is not considered relevant in the case of confined channels, while it is an important feature either for partly confined and unconfined channels.

Channel adjustments are evaluated for large channels (width > 30 m), either for partly confined - unconfined and for confined streams.

For each indicator, in most cases three possible answers are defined (except for a limited number with two or four answers): (A) unaltered conditions or no significant alterations; (B) intermediate conditions; (C) high level of alterations. A Guide to the compilation of the evaluation forms is to be found at the end of this report.

In order to obtain a classification, it was necessary to define an objective evaluation procedure. The criterion utilized here is included within the evaluation scoring systems: scores are assigned to each indicator proportionally to its importance in the overall evaluation.

The procedure developed, although relatively simple, includes a high number of indicators (28): rather than selecting a few significant indicators, it was preferred to consider all aspects for an overall assessment in order to achieve a systematic and organized analysis of the problem. For example, human disturbances are evaluated in

two ways: on the one hand, their assessment as artificial elements and on the other, the assessment of their impacts on the functionality of processes and on channel adjustments. Indicators of functionality require some interpretative level of morphological forms and processes, rather than the measurement of given parameters, therefore they need expertise and specific knowledge of the field of investigation.

The evaluation is carried out by making a synergic use of two types of observations and measurements: (1) remote sensing and GIS analysis; (2) field survey. A succession of the following **operative phases** is recommended: (1) collection of existing material and information on the reach and catchment; (2) observation and analysis of remote sensing images: during this phase many indicators can be already determined, and a list of the critical points which need to be resolved in the field; (3) field survey: this phase is concentrated on a representative sub-reach, but also includes a check on some specific points along the reach (the “*field evaluation forms*” are compiled during phases 2 and 3); (4) final measurements from remote sensing – GIS and/or collection of additional information: once the critical points have been resolved in the field, it is possible to finalize the evaluation (the “*electronic evaluation forms*” are compiled at this stage). In some cases, additional information may be needed for some indicator (e.g. information on interventions or management activities by public agencies).

**Table 3.2** – List of indicators.

<b>GEOMORPHOLOGICAL FUNCTIONALITY</b>	
<b><i>Longitudinal continuity</i></b>	
<i>F1</i>	Longitudinal continuity in sediment and wood flux
<b><i>Lateral continuity</i></b>	
<i>F2</i>	Presence of a modern floodplain
<i>F3</i>	Hillslope – river corridor connectivity
<i>F4</i>	Processes of bank retreat
<i>F5</i>	Presence of a potentially erodible corridor
<b><i>Channel pattern</i></b>	
<i>F6</i>	Bed configuration – valley slope
<i>F7</i>	Forms and processes typical of the channel pattern
<i>F8</i>	Presence of typical fluvial forms in the alluvial plain
<b><i>Cross-section configuration</i></b>	
<i>F9</i>	Variability of the cross-section
<b><i>Bed structure and substrate</i></b>	
<i>F10</i>	Structure of the channel bed
<i>F11</i>	Presence of in-channel large wood
<b><i>Vegetation</i></b>	
<i>F12</i>	Width of functional vegetation
<i>F13</i>	Linear extension of functional vegetation
<b>ARTIFICIALITY</b>	
<b><i>Upstream alteration of longitudinal continuity</i></b>	
<i>A1</i>	Upstream alteration of flows
<i>A2</i>	Upstream alteration of sediment discharges
<b><i>Alteration of longitudinal continuity in the reach</i></b>	
<i>A3</i>	Alteration of flows in the reach
<i>A4</i>	Alteration of sediment discharge in the reach
<i>A5</i>	Crossing structures
<b><i>Alteration of lateral continuity</i></b>	
<i>A6</i>	Bank protections
<i>A7</i>	Artificial levees
<b><i>Alteration of channel morphology and/or substrate</i></b>	
<i>A8</i>	Artificial changes of river course
<i>A9</i>	Other bed stabilization structures
<b><i>Interventions of maintenance and removal</i></b>	
<i>A10</i>	Sediment removal
<i>A11</i>	Wood removal
<i>A12</i>	Vegetation management
<b>CHANNEL ADJUSTMENTS</b>	
<i>CA1</i>	Adjustments in channel pattern
<i>CA2</i>	Adjustments in channel width
<i>CA3</i>	Bed-level adjustments

### 3.2 Scoring system and calculation of *MQI*

For each indicator, the scores to be assigned to each answer are reported on the evaluation form, proportionally to the degree of alteration, that is, in increasing order from *A* (score 0) to *C* (maximum score for that indicator). Furthermore, in the evaluation system a judgement on the degree of confidence (low, medium, high) and a second (alternative) choice in the classes can be expressed. In fact, cases with missing information or data are possible. It is therefore useful to distinguish the different cases *a posteriori*. This system will yield a simplified estimation of the overall uncertainty degree associated with the final evaluation. This is achieved by assuming the scores associated to the second choice (with low or medium confidence in the answer), and obtaining a range of variability rather than a single final value of the *MQI*.

Regarding the final score, initially the total deviation  $S_{tot}$  from non altered conditions is calculated as the sum of the scores assigned to all indicators. A **Morphological Alteration Index (*MAI*)** is then defined as:

$$MAI = S_{tot} / S_{max} \quad (1)$$

where  $S_{max}$  is the maximum possible deviation for the given stream typology (corresponding to the sum of the scores of class *C* for all the questions applicable to the study case). Such an index ranges therefore from a minimum of 0 (no alteration) to a maximum of 1 (maximum alteration).

A stream **Morphological Quality Index (*MQI*)** is then defined as complementary to the previous one, that is:

$$MQI = 1 - MAI \quad (2)$$

Such an index, contrary to the *MAI*, assumes a value of 0 in the case of maximum alteration, and a value of 1 in the case of reference conditions (corresponding to maximum functionality, minimum artificiality and minimum channel changes).

The total score ( $S_{max}$ ) can vary within each category (confined, partly confined and unconfined) depending on river typology and/or physical context. For example, indicator *F6* (bed morphology in single-thread confined channels) is not evaluated for bedrock streams; channel adjustments indicators (*CA1-CA3*) are evaluated only for large channels (channel width > 30 m, see above); or *F10* (structure of the channel bed) is not applied in deep rivers where its evaluation would be impossible.

An additional rule was defined for the cases of extremely dense, dominant presence of artificial elements along the reach, as transversal structures, bank protections, levees, and bed revetments (indicators *A4*, *A6*, *A7*, and *A9*, respectively). This rule was included to adequately rank river reaches with only one or just a few types of artificial elements but at very large extensions and/or density, heavily affecting the overall morphological conditions (e.g., reaches in urbanized areas completely embanked; steep mountain creeks with staircase-like sequences of grade-control structures). Without this “extra-penalty”, the assignment of class *C* to only a few artificiality indicators would result in an underestimation of artificiality (and thus to the overestimation of morphological quality). To weigh these cases more effectively, rather than defining an additional class, an extra score of 12 was assigned and added only to the numerator of Eq. (1).

Based on *MQI*, five classes of morphological quality are defined as follows:

- (1) *very good or high*:  $0.85 \leq MQI \leq 1$ ;
- (2) *good*:  $0.7 \leq MQI < 0.85$
- (3) *moderate*:  $0.5 \leq MQI < 0.7$ ;

- (4) *poor*:  $0.3 \leq MQI < 0.5$ ;  
 (5) *very poor or bad*:  $0 \leq MQI < 0.3$ .

The scores assigned to the indicators and to the limits of the quality classes have been verified and better defined on the basis of a testing phase carried out on about 102 reaches representative of different morphological conditions (confined, partly confined, unconfined, meandering, braided, etc.) and of various situations of artificiality (ranging from relatively natural to highly artificial streams).

### 3.3 Testing phase

The indicators and the overall scoring system have been tested on 102 river reaches, representing a sufficiently wide range of conditions, in terms of channel morphology and human intervention all over Italy. Such applications allowed (i) the verification of whether some unexpected result would occur (e.g., river reaches with heavy alterations were expected to fall into the lower categories and vice versa), and (ii) the refining of the indicator scores.

A series of examples of applications (in decreasing order of *MQI*) to a range of Italian rivers is reported as follows.

#### 3.3.1 *Sentino stream along the Frasassi gorge.*

The first example is a mountain stream along a confined reach, with a mean channel width of 12 m and slope of 0.004. The channel is classified as confined single thread, banks are often composed of rock outcropping ([Figure 3.1A](#)), the channel bottom alternates between areas of substrate outcropping and subreaches with cobble and gravel and a riffle-pool configuration ([Figure 3.1B](#)). Channel gradient is in fact not very high, as the stream is not in its initial part but at the passage between two partly confined reaches. Channel changes are not considered given the limited channel width (< 30 m). There are no significant alterations compared to the expected conditions, except for the indicators *F3* and *F12* (hillslopes – stream connection and width of functional vegetation) which are in class *B* given the presence of a road on the side of the stream along the whole reach. There are no significant structures upstream that can produce alterations to channel-forming discharges, while the existence of weirs upstream slightly alters the sediment discharge (*A2* in class *B1*). The final result is *MQI* = 0.92 and the reach is classified as *very good*.



**Figure 3.1** – Sentino stream along the Frasassi Gorge (*MQI* = 0.92: *Very good*).  
 (A) Rocky bank; (B) channel bed composed of sediments and riffle-pool configuration.

### 3.3.2 *Tagliamento River near Turrída.*

In this reach, located in the Upper Friulian Plain, the river is unconfined since the old terraces (one terrace is clearly visible in the right side of [Figure 3.2A](#)) are far apart allowing a wide space for lateral mobility (more than 3 km). The river displays a braided morphology and has the following characteristics: the bed is mainly made up of gravels; channel width ranges from 800 m to 1,000 m; average channel slope is 0.003. The elements which determine alterations of morphological quality are very few, due to a relatively low level of human intervention, if compared to other Italian rivers, in the drainage basin and in the alluvial plain. The elements of alteration are: (1) in-channel sediment removal, which occurred mainly in the 1970s and 1980s, and, likely, removal of large woody debris; (2) channel adjustments which have led to significant channel narrowing (about 50%, referring to channel width in the 1950s) and moderate incision (about 1.5 m). The reach has  $MQI = 0.87$ , and is classified as *very good*.



**Figure 3.2** – Tagliamento River near Turrída ( $MQI = 0.87$ : *Very good*).

(A) Aerial photo dated 2009 of the study reach showing a typical braided morphology and a riparian zone which has a notable extent; (B) photo of channels and bars; (C) large woody debris within the channel and riparian vegetation (in the background).

### 3.3.3 *Cecina River near Casino di Terra.*

This is an unconfined river which flows within a relatively narrow plain in a hilly physiographic unit (*reach 3\_7* in [Figure 2.1](#)), with watershed area of about 635 km<sup>2</sup>. The channel is classified as sinuous with alternate bars ([Figure 3.3A](#)), with a gravel bed and riffle-pool configuration, mean slope of about 0.003 and mean width of about 50 m. The main elements of alteration are: (1) presence of some weirs upstream (*A2* in class *B1*); (2) moderate sediment mining in the past, in turn responsible for some significant channel adjustments (moderate narrowing and incision, with *CA2* and *CA3* both in class *B*); (3) some localized artificial elements in the reach (bridge, sills, etc.).



Notwithstanding such alterations, the river presents some positive aspects, being characterized by some lateral mobility, a good morphological diversity ([Figure 3.3B](#)), the presence of a modern floodplain (even though narrow and discontinuous) and of a potential erodible corridor, absence of levees, presence of a corridor of spontaneous vegetation (continuous but of intermediate width). The final result is  $MQI = 0.78$ , therefore the reach is classified as *good*.



**Figure 3.3** – Cecina River near Casino di Terra ( $MQI = 0.78$ : *Good*).

(A) Aerial photo dated 2006 of part of the reach highlighting the typical sinuous morphology with alternate bars; (B) detail of the reach showing the morphological variability associated with a diversification of forms and the presence of retreating banks (on the bank).

### 3.3.4 *Furkelbach (Furcia Torrent) in Val Pusteria.*

The Furkelbach (or Furcia) torrent is a left tributary of the Rienza River (Val Pusteria, Provincia Autonoma di Bolzano), entirely belonging to a physiographic unit of “alpine mountain area”. Its drainage area is 23.4 km<sup>2</sup>. The analysed reach (length of 1.7 km, from 1,310 to 1,148 m a.s.l., with a mean bed slope of 9.5%) is a single-thread confined stream with a mean channel width of about 8 m. The Furkelbach represents a typical case of an alpine torrent strongly altered by hydraulic structures, the presence of an adjacent road which alters the hillslope – stream continuity, and maintenance interventions on riparian vegetation. However, the geomorphic functionality results in being of an intermediate level. Regarding artificiality, the highest criticality is represented by the presence of 67 weirs in the reach ([Figure 3.4A](#)), with a resulting frequency of about 4 for each 100 m (therefore  $A4$  is in class C with further 14 scores assigned to it because of the very high density). Furthermore, slightly upstream (400 m) there is a big open check dam ([Figure 3.4B](#),  $A2$  in class B1). Other artificiality elements include some bank protections ( $A6$  in class B), and the relative removal and cutting of riparian vegetation and wood ( $A11$  and  $A12$  in class C). Summarising,  $MAI$  is equal to 0.54 and  $MQI$  to 0.46, meaning that the quality of the reach is *poor*.



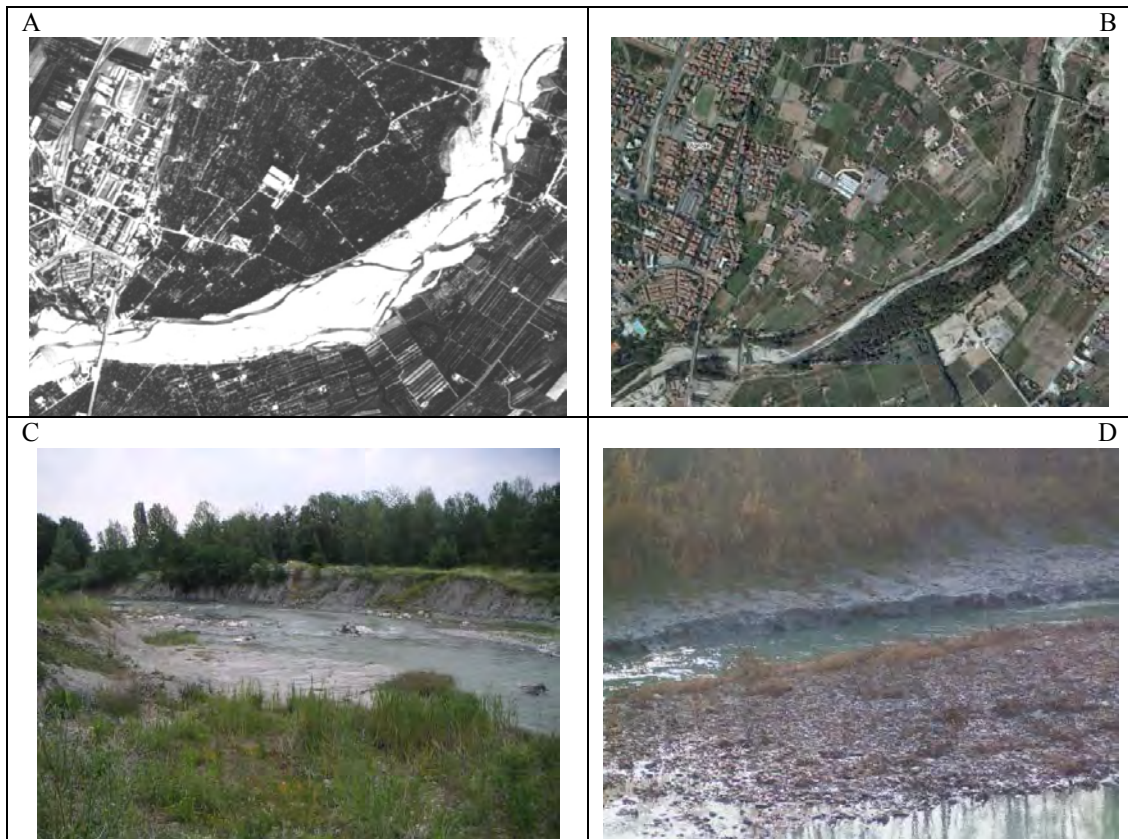
**Figure 3.4** – The Furkelbach (Furcia) Torrent in Val Pusteria ( $MQI = 0.46$ : *Poor*).

(A) The reach analysed downstream: the influence of the several weirs on the channel morphology is evident from the fact that it does not present a natural channel bed configuration with cascades as would be expected for the given channel slope (9.5%), as well as the artificiality of riparian vegetation subject to periodic cutting, and the total absence of woody material within the channel; (B) the open check dam immediately upstream of the reach.

### 3.3.5 *Panaro River near Vignola.*

This is an unconfined reach between Vignola and Savignano (length of about 2 km), along the apex of an alluvial fan (physiographic unit of high Apenninic plain), having a mean channel slope of 0.007, and a mean width of 96 m. It represents a case of very strong physical degradation, although the artificiality is not at maximum levels, demonstrated by drastic changes in the channel pattern and width ([Figure 3.5A](#) and [Figure 3.5B](#)), and of the channel bed (incision > 6 m), mainly related to past intensive mining activity and the reduction of upstream sediment supply. Therefore the channel changes indicators ( $CA1$ ,  $CA2$  and  $CA3$ ) result as having maximum scores. Other main critical points are represented by the presence of weirs upstream and in the reach ( $A2$  in class  $B2$  and  $A4$  in class  $B$ ), the absence of a modern floodplain ([Figure 3.5C](#)), the alteration of bed substrate with widespread clay outcrops ( $F10$  in class  $C2$ ) ([Figure 3.5D](#)), and the reduction of morphological diversity, in turn related to the strong incision. The final result is  $MQI = 0.40$ , therefore the reach is classified as *poor*.





**Figure 3.5** – Panaro River near Vignola ( $MQI = 0.40$ : *Poor*).

(A) Aerial photo dated 1954 showing a wide braided channel; (B) aerial photo dated 2003 highlighting the drastic narrowing and change in channel pattern (single thread); (C) detail of the reach showing high unstable banks and terraced surfaces deriving from the strong incision; (D) detail showing the clay outcropping on the channel bed and basal banks.

### 3.3.6 Arno River in Florence.

This is an unconfined reach within a plain (physiographic unit of intermountain plain), well representative of a large river crossing a densely urbanized area ([Figure 3.6A](#)). The channel is classified as straight, with mean slope of 0.0018, and mean channel width of 115 m. The artificiality of the reach is very high, because of the continuous presence of lateral structures, and in part transversal, that prevent any kind of lateral and vertical dynamics ([Figure 3.6B](#)), compromising most of the morphological functionalities. Upstream longitudinal continuity is also altered due to the presence of dams and several weirs. The continuous presence of bank protection elements and levees in the reach entails the assignment of additional scores to the indicators  $A6$  and  $A7$ , therefore the artificiality reaches the maximum score. The final result is  $MQI = 0.11$ , therefore the reach is classified as *very poor*.

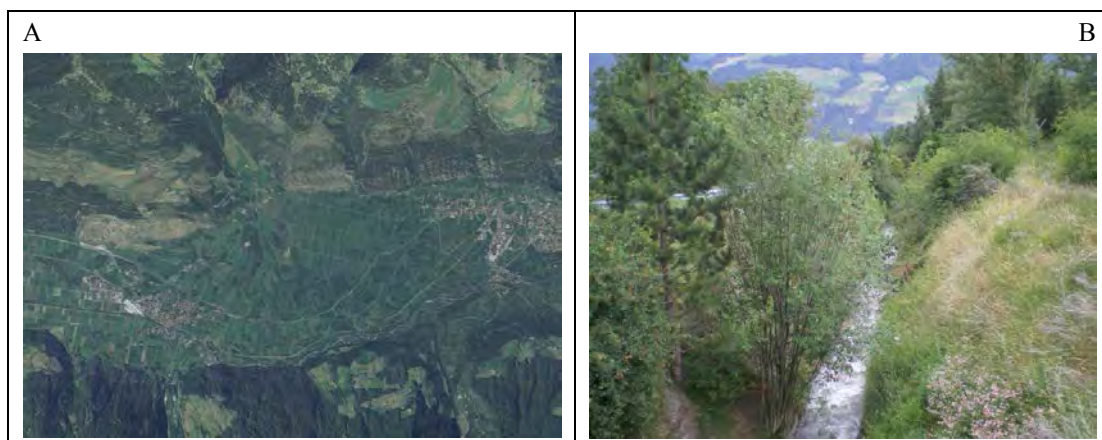


**Figure 3.6** – Arno River in Florence ( $MQI = 0.11$ : *Very poor*).

(A) Satellite image dated 2007 showing how the reach crosses a highly urbanized area. (B) Detail showing the presence of bank protection elements (with the function of levees) and the homogeneity of cross section.

### 3.3.7 *Gadria Torrent near Lasa.*

This is a left tributary of the Adige River, subject to very frequent channelized debris flow, 1÷2 per year in average. The catchment (drainage area of about  $14 \text{ km}^2$ ) is very steep and subject to frequent surface landslides. The analyzed reach (2.2 km) crosses the Gadria alluvial fan, one of the biggest in Europe, and consequently presents the characteristics of an unconfined reach in a mountain physiographic context. The channel was channelized at the end of the 19<sup>th</sup> century, when a straight course with bed revetment was created ([Figure 3.7](#)), with the aim of conveying the debris flow down to the Adige River. Later, an open check dam was built just upstream to stop all the sediment. Geomorphological functionality is at the minimum for most of the indicators (except *FI*). The artificiality is high (class *C*) only for relatively few indicators. However, the continuous presence of bank protection elements, levees, and bed revetments entails the assignation of additional scores to indicators *A6*, *A7* and *A9*, causing a maximum artificiality score. The resulting  $MQI$  is equal to 0.04 (*very poor*).



**Figure 3.7** – Gadria Torrent near Lasa ( $MQI = 0.04$ : *Very poor*).

(A) Aerial photo dated 2006 showing the alluvial fan crossed by the stream along the study reach. (B) Detail showing the artificial configuration of the stream.

## References

- AGENCES DE L'EAU (1998). *SEQ Physique: A System for the Evaluation of the Physical Quality of Watercourses*; Agences de l'Eau, 15 pp.
- ALBER A. & PIÉGAY H. (2011). *Spatial disaggregation and aggregation procedures for characterizing fluvial features at the network-scale: application to the Rhône basin (France)*. *Geomorphology* 125, 343-360.
- BAILEY RC, NORRIS RH, REYNOLDS TB. (2004). *Bioassessment of freshwater ecosystems: using the reference condition approach*. Springer, New York, 170 pp.
- BARTHOLDY J. & BILLI P. (2002). *Morphodynamics of a pseudomeandering gravel bar reach*. *Geomorphology*, 42, 293–310.
- BILLI P., RINALDI M., SIMON A. (1997). *Disturbance and adjustment of the Arno River, central Italy. I: Historical perspective, the last 2000 years*. In: Wang, S.S.Y., Langendoen, E.J., Shields, Jr., F.D. (Eds.), *Management of Landscapes Disturbed by Channel Incision, Stabilization, Rehabilitation, Restoration*. Center for the Computational Hydroscience and Engineering, University of Mississippi, Oxford, MS, pp. 595-600.
- BINDER W., JÜRGING P., KARL J. (1983). *Natural river engineering – characteristics and limitations*. *Garten und Landschaft* 2, 91-94.
- BRICE J.C. (1984). *Planform properties of meandering rivers*. In *River Meandering, Proceedings Conference on Rivers '83*, Elliott CM (ed.). ASCE: New York; 1–15.
- BRIERLEY G.J. & FRYIRS K.A. (2005). *Geomorphology and River Management. Applications of the River Styles Framework*. Blackwell Publishing, 398 pp.
- BUFFAGNI A., ERBA S. & CIAMPITIELLO M. (2005). *Il rilevamento idromorfologico e degli habitat fluviali nel contesto della direttiva europea sulle acque (WFD): principi e schede di applicazione del metodo Caravaggio - Notiziario dei metodi analitici*, 2, Istituto di Ricerca sulle Acque, CNR IRSA, 32–34.
- CEN (2002). *A Guidance Standard for Assessing the Hydromorphological Features of Rivers*. CEN – TC 230/WG 2/TG 5: N32
- CHANDESRI A., MENGIN N., MALAVOI J.R., SOUCHON Y., PELLA H., WASSON J.G. (2008). *Système Relationnel d'Audit de l'Hydromorphologie des Cours d'Eau. Principes et méthodes, v3.1*. Cemagref, Lyon Cedex, 81 pp.
- CHURCH M.A. (1992). *Channel Morphology and Typology*. In: P.Callow and Petts, G.E. (Eds), *The Rivers Handbook*, Oxford, Blackwell, 126 – 143.
- CLARKE S.J., BRUC-BURGESS L., AND WHARTON G. (2003). *Linking form and function: towards an eco-hydromorphic approach to sustainable river restoration*. *Aquatic Conservation: Marine and Freshwater Ecosystems*, 13, 439 – 450.
- COMITI F. (2012). *How natural are Alpine mountain rivers? Evidence from the Italian Alps*. *Earth Surface Processes and Landforms*, DOI:10.1002/esp.2267.
- DUFOUR S. & PIÉGAY H. (2009). *From the myth of a lost paradise to targeted river restoration: forget natural references and focus on human benefits*. *River Research and Applications* 25, 568-581.
- ENVIRONMENT AGENCY (1998). *River Geomorphology: a practical guide*. Environment Agency, Guidance Note 18, National Centre for Risk Analysis and Options Appraisal, London, 56 pp.
- EUROPEAN COMMISSION (2000). *Directive 2000/60 EC of the European Parliament and of the Council of 23 October 2000 establishing a framework for Community action in the field of water policy*. Official Journal L 327, 22/12/2000, 73 pp.



- EUROPEAN COMMISSION (2003). *Rivers and Lakes – Typologies, Reference Conditions and Classification Systems*. Common Implementation Strategy for the Water Framework Directive (2000/60/EC), Guidance document n°10, Brussels, Belgium, 87 pp.
- EUROPEAN COMMISSION (2007). *Directive 2007/60/EC of the European Parliament and of the Council of 23 October 2007 on the Assessment and Management of Flood Risks*. Official Journal L 288/27, 6/11/2007, Brussels, Belgium, 8 pp.
- GURNELL A., TUBINO M., TOCKNER K. (2009). *Linkages and feedbacks in highly dynamic alpine fluvial systems*. *Aquatic Science*, 71(3), 251-252.
- ISPRA (2009). *Implementazione della Direttiva 2000/60/CE - Analisi e valutazione degli aspetti idromorfologici*: <http://www.sintai.sinanet.apat.it/view/index.faces>.
- JUNGWIRTH M., MUHAR S., SCHMUTZ S. (2002). *Re-establishing and assessing ecological integrity in riverine landscapes*. *Freshwater Biology* 47, 867-887.
- KAIL J., HERING D. (2009). *The influence of adjacent stream reaches on the local ecological status of Central European mountain streams*. *River Research and Applications*, 25(5), 537-550.
- KERN K. (1992). *Restoration of lowland rivers: the German experience*. In: Carling, P.A., Petts, G.E. (Eds), *Lowland Floodplain Rivers: Geomorphological Perspectives*. John Wiley and Sons, Chichester, UK, 279-297.
- LENZI M.A., D'AGOSTINO V. & SONDA D. (2000). *Ricostruzione morfologica e recupero ambientale dei torrenti. Criteri metodologici ed esecutivi*. Editoriale Bios, 208 pp.
- LEOPOLD L.B. & WOLMAN M.G. (1957). *River channel patterns: braided, meandering and straight*. *US Geol. Surv., Prof. Paper*, 282-B, 39-85.
- MAAS S., BROOKES A. (2009). *Fluvial Geomorphology*. In: Environment Agency, *Fluvial Design Guide, FDG2*, 3-1 - 3-20.
- MALAVOI J.R. & BRAVARD J.P. (2010). *Elements d'hydromorphologie fluviale*. ONEMA, Baume-Les-Dames, France, 224 pp.
- MONTGOMERY D.R. & BUFFINGTON J.M. (1997). *Channel-reach morphology in mountain drainage basins*. *Geological Society of America Bulletin*, 109 (5), 596-611.
- NARDINI A., SANSONI G., SCHIPANI I., CONTE G., GOLTARA A., BOZ B., BIZZI S., POLAZZO A., MONACI M. (2008). *Problemi e limiti della Direttiva Quadro sulle Acque. Una proposta integrativa: FLEA (FLuvial Ecosystem Assessment)*. *Biologia Ambientale*, 22 (2), 3-18.
- NEWSON M.D., LARGE A.R.G. (2006). *Natural rivers, hydromorphological quality and river restoration: a challenging new agenda for applied fluvial geomorphology*. *Earth Surface Processes and Landforms*, 31, 1606-1624.
- OLLERO OJEDA A., BALLARÍN FERRER D., DÍAZ BEA E., MORA MUR D., SÁNCHEZ FABRE M., ACÍN NAVERAC V., ECHEVERRÍA ARNEDO M.T., GRANADO GARCÍA D., IBISATE GONZÁLEZ DE MATAUCO A., SÁNCHEZ GIL L., SÁNCHEZ GIL N. (2007). *Un índice hidrogeomorfológico (IHG) para la evaluación del estado ecológico de sistemas fluviales*. *Geographicalia*, 52, 113-141.
- OLLERO A., IBISATE A., GONZALO L.E., ACÍN V., BALLARÍN D., DÍAZ E., DOMENECH S., GIMENO M., GRANADO D., HORACIO J., MORA D., SÁNCHEZ M. (2011). *The IHG index for hydromorphological quality assessment of rivers and streams: updated version*. *Limnetica* 30(2), 255-262.
- PALMER M.A., BERNHARDT E.S., ALLAN J.D., LAKE P.S., ALEXANDER G., BROOKS S., CARR J., CLAYTON S., DAHM C.N., SHAH J.F., GALAT D.L., LOSS S.G.,

- GOODWIN P., HART D.D., HASSETT B., JENKINSON R., KONDOLF G.M., LAVE R., MEYER J.L., O'DONNELL T.K., PAGANO L. & SUDDUTH E. (2005). *Standard for ecologically successful river restoration*. Journal of Applied Ecology, 42: 208-217.
- POFF N.L., ALLAN J.D., BAIN M.B., KARR J.R., PRESTEGAARD K.L., RICHTER B.D., SPARKS R.E., STROMBERG J.C. (1997). *The Natural Flow Regime: a new paradigm for riverine conservation and restoration*. BioScience, 47(11), 769-784.
  - RAVEN P.J., FOX P.J.A., EVERARD M., HOLMES N.T.H., DAWSON F.H. (1997). *River Habitat Survey: a new system for classifying rivers according to their habitat quality*. In: Boon P.J. and Howell D.L. (Eds), *Freshwater quality: Defining the indefinable?* The Stationary Office, Edinburgh, 215-234.
  - RAVEN P.J., HOLMES N.T.H., DAWSON F.H., FOX P.J.A., EVERARD M., FOZZARD I.R., ROUEN K.J. (1998). *River Habitat Quality. The physical character of rivers and streams in the UK and Isle of Man*. River Habitat Survey Report No. 2, 34 pp.
  - RHOADS B.L., WILSON D., URBAN M., HERRICKS E.E. (1999). *Interaction between scientists and nonscientists in community-based watershed management: emergence of the concept of stream naturalization*. Environmental Management 24(3), 297-308.
  - RICHTER B.D., BAUMGARTNER J.V., POWELL J., BRAUN D.P. (1996). *A Method for Assessing Hydrologic Alteration within Ecosystems*. Conservation Biology, 10(4), 1163-1174.
  - RINALDI M. (2003). *Recent channel adjustments in alluvial rivers of Tuscany, Central Italy*. Earth Surface Processes and Landforms, 28 (6), 587-608.
  - RINALDI M. (2008). *Schede di rilevamento geomorfologico di alvei fluviali*. Il Quaternario, 21(1B), 353-366.
  - RINALDI M., SIMON, A. (1998). *Bed-level adjustments in the Arno River, central Italy*. Geomorphology 22, 57-71
  - RINALDI M., TERUGGI L.B., SIMONCINI C., NARDI L. (2008). *Dinamica recente ed attuale di alvei fluviali: alcuni casi di studio dell'Appennino Settentrionale*. Il Quaternario, 21(1B), 291-302.
  - RINALDI M., SURIAN N., COMITI F., BUSSETTINI M. (2011). *The morphological quality index (MQI) for stream evaluation and hydromorphological classification*. Italian Journal of Engineering Geology and Environment, 11 (1), 17-36.
  - RINALDI M., SURIAN N., COMITI F., BUSSETTINI M. (2013). *A new method for the assessment and analysis of hydromorphological stream conditions: the Morphological Quality Index (MQI)*. Geomorphology, in press.
  - SCHUMM S.A. (1977). *The Fluvial System*. Wiley, New York, 338 pp.
  - SEAR D.A., NEWSON M.D. & THORNE C.R. (2003). *Guidebook of Applied Fluvial Geomorphology*. Defra/Environment Agency Flood and Coastal Defence R&D Programme, R&D Technical Report FD1914, 233 pp.
  - SENNATT K.M., SALANT N.L., RENSHAW C.E., MAGILLIGAN F.J. (2008). *Assessment of methods for measuring embeddedness: application to sedimentation in flow regulated streams*. Journal of American Water Resources Association 42(6), 1671-1682.
  - SILIGARDI *et al.* (2007) – *IFF2007, Indice di Funzionalità Fluviale. Nuova versione del metodo revisionata e aggiornata*. Manuale APAT 2007, 321 pp.
  - SIMON A. & RINALDI M. (2006). *Disturbance, stream incision, and channel evolution: the roles of excess transport capacity and boundary materials in controlling channel response*. Geomorphology, 79, 361-383.
  - SURIAN N. & RINALDI M. (2003). *Morphological response to river engineering and management in alluvial channels in Italy*. Geomorphology, 50 (4), 307-326.

- SURIAN N., RINALDI M., PELLEGRINI L., AUDISIO C., MARAGA F., TERUGGI L., TURITTO O. & ZILIANI L. (2009a). *Channel adjustments in northern and central Italy over the last 200 years*. In: James L.A., Rathburn S.L., Whittecar G.R. (eds.), *Management and Restoration of Fluvial Systems with Broad Historical Changes and Human Impacts*, Geological Society of America Special Paper 451, pp. 83-95.
- SURIAN N., RINALDI M., PELLEGRINI L., con il contributo di Audisio C., Barbero G., Cibien L., Cisotto A., Duci G., Maraga F., Nardi L., Simoncini C., Teruggi L.B., Turitto O., Ziliani L. (2009b). *Linee guida per l'analisi geomorfologica degli alvei fluviali e delle loro tendenze evolutive*. CLEUP, Padova, 78 pp.
- THORNE C.R. (1997). *Channel types and morphological classification*. In: C.R. Thorne, R.D. Hey and M.D. Newson (Eds), *Applied Fluvial Geomorphology for River Engineering and Management*, Wiley, 175-222.
- VOGEL R.M. (2011). *Hydromorphology: scientific and engineering challenges for 2050*. In: Grayman W.M, Loucks, D.P, and Saito L. (Eds), *Environment and Water Resources in 2050: A Vision and Path Forward*, Emerging and Innovative Technology Committee, EWRI. ASCE Press, 2011, in press.
- WOHL E.E. (2000). *Mountain rivers*. American Geophysical Union, Washington DC, 320 pp.
- WYŻGA B., AMIROWICZ A., RADECKI-PAWLIK A., ZAWIEJSKA J. (2010). *Hydromorphological conditions, potential fish habitats and the fish community in a mountain river subjected to variable human impacts, the Czarny Dunajec, Polish Carpathians*. *River Research and Applications*, 25(5), 517-536.
- WYŻGA B., ZAWIEJSKA J., RADECKI-PAWLIK A., HAJDUKIEWICZ H. (2012). *Environmental change, hydromorphological reference conditions and the restoration of Polish Carpathian rivers*. *Earth Surface Processes and Landforms*, DOI: 10.1002/esp.3273.

# **APPENDIX 1**

## **GUIDE TO THE COMPILATION OF THE EVALUATION FORMS**

# GUIDE TO THE COMPILATION OF THE EVALUATION FORMS

In this section, a definition of each indicator and an extended version of the possible answers is reported. Furthermore, for each indicator the following information is reported:

- Spatial scale (longitudinal and lateral);
- Type of measurements (e.g. field survey, remote sensing, or other sources of information);
- Typology (confined, partly confined or unconfined);
- Range of application (for those indicators that are not applied in specific cases).

## GENERALITY AND INITIAL SEGMENTATION

The first part of the evaluation form is dedicated to some general information, including the **date** of the field survey (although the complete compilation of the evaluation form requires a preparation phase and a conclusion phase of the measurements after the field visit), and the name(s) of the **operators**. Then the name of the **catchment** and of the **stream/river** is indicated. The **upstream and downstream limits** of the reach must be clearly defined (e.g. name of a tributary, if this represents a limit, or planimetric coordinates). It follows the identification code of the **segment** and **reach**, and the stream **length**.

The following part is dedicated to all information and measurements made during the four steps of the general setting and initial segmentation. During STEP 1, the **physiographic setting** (area and unit) is specified. During STEP 2, the details for the classification of **confinement** are provided. Note that, as for all the indices reported in this section, the operator can report the precise value of the index, or only specify the class (e.g. > 90%, 10÷90% or < 10% for the confinement degree). STEP 3 is dedicated to **channel morphology**. First of all, the name of the image (aerial photo or satellite image) used as a reference for all observations aimed at morphological classification is indicated. Then, all the indices and other information are reported, including the mean bed slope and the mean channel width along the reach. In STEP 4, information regarding **other elements for reach delimitation** is reported. Finally, it is possible to report additional available data or information which are useful for the assessment (e.g. sediment sizes and discharges).

## GEOMORPHOLOGICAL FUNCTIONALITY

### CONTINUITY

#### *F1: Longitudinal continuity in sediment and wood flux*

#### DEFINITION

This indicator evaluates whether the longitudinal continuity of sediment and wood solids is altered by human structures that intercept or create obstacles to their flow (discontinuities due to natural factors, such as rock outcroppings, lakes or landslide dams are not considered).

SPATIAL SCALE	
<i>LONGITUDINAL</i> : Site/Reach	<i>LATERAL</i> : Channel
MEASUREMENTS: Remote sensing and field survey	



The assessment does not depend on the number of alterations, but on their relevance: just one structure can cause a complete alteration of the flux, or differently, many structures may have no significant effects (the number of structures is accounted for in the indicators of Artificiality). The main artificial structures are dams, check dams, and weirs. Other alterations can be due to crossing structures (bridges, fords) or also groins. In the case of a **structure located at the upstream reach limit, this is conventionally assigned to the upstream reach (see [artificiality indicators](#)), but the effects on the longitudinal continuity are considered for the downstream reach**. Therefore, a structure located at the downstream limit is not evaluated for that reach, but for the one downstream.

**EXTENDED ANSWERS**

TYOLOGY	ALL TYPOLOGIES
<b>A</b>	Absence or very negligible presence of alterations in the continuity of sediment and wood flux, that is, there are no significant obstacles or interceptions to the free passage of solid material related to transversal and/or crossing structures (e.g. bridge with no piers or wide span, etc.).
<b>B</b>	Slight alteration in the continuity of sediment and wood flux, that is, most solid material is able to flow along the reach. Depositional forms may exist, indicating sedimentation of the coarsest fractions of bedload by crossing structures and/or groins, but with no complete interception (e.g. bridges with narrow spans and piers, series of consolidation check dams in mountain areas); larger sizes of wood is held by bridge piers and/or open check dams.
<b>C</b>	Strong alteration in the continuity of sediment and wood flux, that is, a strong discontinuity of depositional forms (sediments) exist in upstream and downstream structures because bedload is strongly intercepted (e.g. not filled weirs or check dams).

***F2: Presence of a modern floodplain***

**DEFINITION**

A river in dynamic equilibrium builds a floodplain that is generally inundated for discharges just exceeding channel-forming flows (return interval of 1÷3 years). Channel adjustments (specifically bed incision) or artificial structures (levees) can alter this characteristic form and disconnect the floodplain from channel processes. Lateral extension and longitudinal continuity of a modern floodplain is here considered as an indicator of existing lateral continuity of water and sediment fluxes.

SPATIAL SCALE	
<i>LONGITUDINAL</i> : Site/Reach	<i>LATERAL</i> : Alluvial plain
MEASUREMENTS: Remote sensing and field survey	

**EXTENDED ANSWERS**

TYOLOGY	PARTLY CONFINED OR UNCONFINED
<b>RANGE OF APPLICATION</b>	NOT EVALUATED IN THE CASE OF MOUNTAIN STREAMS ALONG STEEP (>3%) ALLUVIAL FANS
<b>A</b>	Presence of a relatively continuous (> 66% of the reach length) and sufficiently wide floodplain, that is, when the mean width (sum on the two sides) is at least twice the channel width ( <i>W</i> ) in the case of single-thread channels (including sinuous with alternate bars), or at least 1 <i>W</i> .
<b>B</b>	Presence of a discontinuous floodplain (10÷66% of the reach length) of any width, or presence of a continuous (> 66% of the reach length) but not sufficiently wide floodplain, that is, when the mean width (sum on the two sides) is ≤ 2 <i>W</i> in the case of single-thread channels (including sinuous with alternate bars), or ≤ 1 <i>W</i> in the case of multi-thread or wandering channels.
<b>C</b>	Absence of a floodplain or negligible presence (≤ 10% of the reach length of any width).

***F3: Hillslope – river corridor connectivity***

**DESCRIPTION**

The linkage between hillslopes and river corridor is evaluated here in the case of confined channels, as this is very important for the natural supply of sediment and large wood. This is evaluated based on

the presence and percentage on the reach length of elements of disconnection (e.g. roads) in a **strip conventionally 50 m wide for each river side**.

SPATIAL SCALE	
<i>LONGITUDINAL</i> : Reach	<i>LATERAL</i> : Plain/adjacent hillslopes
<b>MEASUREMENTS</b> : Remote sensing and field survey	

**EXTENDED ANSWERS**

TYOLOGY	CONFINED
<b>A</b>	A full connectivity exists between hillslopes and river corridor (channel and floodplain), extending for most of the reach (> 90%).
<b>B</b>	The connectivity between hillslopes and river corridor exists for a significant portion of the reach (33÷90%).
<b>C</b>	The connectivity between hillslopes and river corridor exists for a small portion of the reach (≤ 33%).

***F4: Processes of bank retreat***

**DEFINITION**

Bank erosion is a key process contributing to sediment supply and recovery. An evaluation is necessary as to whether bank erosion processes occur as expected for a given river typology, or if there is a significant difference, such as absence due to widespread bank control, or excessive bank failures due to instability of the system (e.g. due to incision).

SPATIAL SCALE	
<i>LONGITUDINAL</i> : Site/Reach	<i>LATERAL</i> : Channel
<b>MEASUREMENTS</b> : Remote sensing and/or field survey	

**EXTENDED ANSWERS**

TYOLOGY	PARTLY CONFINED OR UNCONFINED
<b>RANGE OF APPLICATION</b>	NOT EVALUATED IN THE CASE OF STRAIGHT – SINUOUS CHANNELS WITH LOW ENERGY (LOWLAND PLAIN, LOW BED-SLOPE AND/OR BEDLOAD)
<b>A</b>	Frequent retreating riverbanks: bank erosion is observed in a number of points along the reach. Erosion is concentrated on the outer bank of bends (single-thread sinuous – meandering channels) and/or in front of bars (braided or wandering channels).
<b>B</b>	Retreating riverbanks less frequent than expected for a given channel morphology, because impeded by protective elements and/or scarce channel dynamics: erosion is observed locally and for limited lengths.
<b>C</b>	Complete absence or negligible presence (very localized erosion) of retreating riverbanks due to excessive human control (bank protection) and/or absent channel dynamics (except for reaches at low energy: see range of application). Or presence of unstable banks for mass movements (due to excessive bank height) very common along a predominant portion of the reach (very unstable reaches because of bed incision).

***F5: Presence of a potentially erodible corridor***

**DEFINITION**

The presence of a potentially erodible corridor is nowadays widely recognised as a positive attribute of rivers. A rapid assessment is performed by evaluating whether the width and longitudinal continuity of areas without relevant human structures or infrastructures (e.g. houses, roads) are within or out of given ranges.

SPATIAL SCALE	
<i>LONGITUDINAL</i> : Reach	<i>LATERAL</i> : Alluvial plain
MEASUREMENTS: Remote sensing	

**EXTENDED ANSWERS**

TYPOLGY	PARTLY CONFINED OR UNCONFINED
<b>A</b>	Presence of a relatively continuous (> 66% of the reach length) and sufficiently wide potentially erodible corridor (EC), that is, the mean width (sum of the two sides) is at least twice the channel width ( <i>W</i> ) in the case of single-thread channels (including sinuous with alternate bars), or at least 1 <i>W</i> .
<b>B</b>	Presence of a potentially erodible corridor (EC) with medium continuity (33÷66% of the reach length) and width, that is, the mean width (sum of the two sides) is at least twice the channel width ( <i>W</i> ) in case of single-thread channels (including sinuous with alternate bars), or at least 1 <i>W</i> ; or a potentially EC for > 66% of the reach length but not sufficiently wide.
<b>C</b>	Presence of a potentially erodible corridor (EC) of any width but with low continuity (≤ 33% of the reach length).

**MORPHOLOGY**

***F6: Bed configuration – valley slope***

**DEFINITION**

This indicator evaluates whether or not the presence of transversal structures has altered the expected bed configuration (cascade, step-pool, plane bed, riffle-pool, dune-ripple) based on the mean bed slope of the reach. In fact, a strong correlation exists between bed slope and configuration, that is, for increasing slopes the following order of forms is expected: dune-ripples, riffle-pool, plane bed, step-pool / cascade. These morphologies have ecological implications as each of them is characterized by a mosaic of typical habitats.

The existence of a transversal structure can cause an artificial lowering of the local energy slope and therefore a possible alteration of the bed configuration and, consequently, of the associated habitats. This indicator intends therefore to evaluate the magnitude of change caused by transversal structures.

SPATIAL SCALE	
<i>LONGITUDINAL</i> : Site/Reach	<i>LATERAL</i> : Channel
MEASUREMENTS: Field survey and Remote sensing	

This indicator is evaluated only in the case of single thread confined channels (in case of multi-thread or wandering channels, it is substituted by *F7*, therefore *F6* and *F7* are necessarily alternatives).

The operator should determine the mean valley slope along the reach (based on the longitudinal bed profile already used during the phase of segmentation), and then define the **expected bed form** according to [Table 1](#).

**Table 1** – Relations between range of bed slope and expected bed forms.

BED FORMS	DOMINANT GRAIN SIZE	RANGE OF BED SLOPE
Dune-ripple	Sand and fine gravel	≤ 0.2
Riffle-pool	Gravel and cobbles	< 2
Plane bed	Cobbles and gravel	1÷4
Step-pool/cascade	Boulders and cobbles	> 3

**EXTENDED ANSWERS**

<b>TYOPOLOGY</b>	CONFINED
<b>RANGE OF APPLICATION</b>	APPLIED TO SINGLE-THREAD CHANNELS. NOT EVALUATED IN THE CASE OF CONFINED WITH BEDROCK, AND IN THE CASE OF DEEP STREAMS WHEN IT IS NOT POSSIBLE TO OBSERVE THE BED CONFIGURATION
<b>A</b>	Bed forms consistent with the mean valley slope: bed configuration corresponds to that expected, based on the mean valley slope along the reach ( <i>Table 1</i> ). Included in this class are also the morphologies imposed by natural factors (e.g. log steps, landslides, etc.) which locally can determine unexpected bed forms (e.g. riffles in a steep reach, etc.).
<b>B</b>	Bed forms not consistent with the mean valley slope: bed configuration does not correspond to that expected, based on the mean valley slope along the reach ( <i>Table 1</i> ), because of presence of transversal structures (dams, check dams, weirs, sills, ramps, etc.). Included in this class are also the morphologies imposed by natural factors (e.g. log steps, landslides, etc.) which locally can determine unexpected bed forms (e.g. riffles in a steep reach, etc.).
<b>C</b>	Complete alteration of bed forms: all cases in which the bed is completely artificial (revetments) or the distance between transversal structures is so close as to not allow the creation of natural bed forms. Generally this is the case when the scour pool downstream of each structure extends for a length > 40÷50% of the distance between two successive structures.

***F7: Forms and processes typical of the channel pattern***

**DEFINITION**

The aim of this indicator is to qualitatively assess whether the active processes and resultant forms expected for a given morphological type are present along the reach. For example, a channelized reach classified as meandering based on its planimetric configuration may not exhibit typical processes of that morphology.

<b>SPATIAL SCALE</b>	
<i>LONGITUDINAL</i> : Site/Reach	<i>LATERAL</i> : Channel
<b>MEASUREMENTS</b> : Field survey and/or remote sensing	

**EXTENDED ANSWERS**

<b>TYOPOLOGY</b>	ALL TYOPOLOGIES
<b>RANGE OF APPLICATION</b>	IN THE CASE OF CONFINED CHANNELS IT IS APPLIED ONLY TO MULTI-THREAD OR WANDERING MORPHOLOGIES
<b>A</b>	<p>Absence or negligible presence (&lt; 5% of the reach length) of alteration of the natural heterogeneity of forms expected for that river type.</p> <p><i>Braided</i>: typical presence of a multi-thread configuration with several bifurcations and longitudinal bars, frequent pioneer islands and some mature islands.</p> <p><i>Wandering</i>: typical alternate side bars, chute cut-offs, low-water channel highly sinuous and relatively narrow within the bankfull channel, localized braiding phenomena, presence of pioneer islands and in some cases mature islands.</p> <p><i>Sinuuous with alternate bars</i>: typical alternate side bars, chute cut-offs, low-water channel highly sinuous and relatively narrow within the bankfull channel, succession of riffles and pools (except in sand-bed rivers).</p> <p><i>Sinuuous or meandering with bars</i>: side or point bars, frequent erosion of outer banks (particularly in meandering channels), possible chute cut-offs, succession of riffles and pools (except in sand-bed rivers).</p> <p><i>Straight, sinuuous or meandering at low energy</i>: they do not necessarily exhibit a significant heterogeneity of forms: they can be stable and with no bars.</p>
<b>B</b>	Alteration for a limited portion of the reach ( $\leq 33\%$ of the reach length) of the natural heterogeneity of forms expected for that river type.
<b>C</b>	Consistent alteration for a significant portion of the reach ( $> 33\%$ of the reach length) of the natural heterogeneity of forms expected for that river type.

***F8: Presence of typical fluvial forms in the alluvial plain***

**DEFINITION**

This indicator is applied only to lowland meandering rivers, and accounts for the presence or not of typical fluvial forms (such as oxbow lakes, secondary channels, etc.) that are normally expected to exist in the alluvial plain.

SPATIAL SCALE	
<i>LONGITUDINAL</i> : Reach	<i>LATERAL</i> : Alluvial plain
<b>MEASUREMENTS</b> : Remote sensing	

**EXTENDED ANSWERS**

TYOLOGY	PARTLY CONFINED OR UNCONFINED
RANGE OF APPLICATION	IT IS APPLIED ONLY TO MEANDERING CHANNELS (NOW OR IN THE PAST) OF LOWLAND PHYSIOGRAPHIC UNITS
<b>A</b>	Presence of natural fluvial forms in the alluvial plain related to the meandering channel dynamics (oxbow lakes, secondary channels, traces of abandoned meanders, wet zones, etc.).
<b>B</b>	Presence of traces of fluvial forms in the alluvial plain (abandoned after the 1950s), now not in connection with the present channel but with possible reactivation by recovery interventions.
<b>C</b>	Complete absence of fluvial forms in the alluvial plain related to the meandering channel dynamics.

***F9: Variability of the cross-section***

**DEFINITION**

This indicator accounts for the variability and heterogeneity of forms and surfaces in cross-section expected for a given channel morphology, and the percentage of the reach with altered conditions is evaluated.

SPATIAL SCALE	
<i>LONGITUDINAL</i> : Site/Reach	<i>LATERAL</i> : Channel
<b>MEASUREMENTS</b> : Field survey and remote sensing	

**EXTENDED ANSWERS**

TYOLOGY	CONFINED
<b>A</b>	Absence or localized presence ( $\leq 5\%$ of the reach length) of alteration of the cross-section natural heterogeneity along the entire reach: a natural variability of the cross section (channel width and depth) exists – in relation to the presence of bars, vegetation, boulders, influence of hillslopes – and/or presence of frequent zones of flow separation adjacent to the banks. Or presence of alteration only on one side for $\leq 10\%$ of the total length of the banks (that is, the sum of both banks) (except for large channels, i.e. $W > 30$ m).
<b>B</b>	Presence of alteration of the cross-section natural heterogeneity for a limited portion of the reach ( $\leq 33\%$ of the reach length): a natural variability of the cross section (channel width and depth) exists for $>66\%$ of the reach length, and/or occasional zones of flow separation. Or presence of alteration only on one side for $\leq 66\%$ of the total length of the banks (that is, the sum of both banks) (except for large channels, i.e. $W > 30$ m).
<b>C</b>	Presence of alteration of the cross-section natural heterogeneity for a significant portion of the reach ( $> 33\%$ of the reach length): the cross section is nearly homogeneous for a significant portion of the reach ( $> 33\%$ ), and/or absence of zones of flow separation adjacent to the banks. Or presence of alteration only on one side for $> 66\%$ of the total length of the banks (that is, the sum of both banks) (except for large channels, i.e. $W > 30$ m).

<b>TYOPOLOGY</b>	PARTLY CONFINED OR UNCONFINED
<b>RANGE OF APPLICATION</b>	NOT EVALUATED IN THE CASE OF STRAIGHT, SINUOUS OR MEANDERING CHANNELS WITH NATURAL ABSENCE OF BARS (LOWLAND RIVERS, LOW GRADIENTS AND/OR LOW BEDLOAD) (NATURAL CROSS-SECTION HOMOGENEITY)
<b>A</b>	Absence or localized presence ( $\leq 5\%$ of the reach length) of alteration of the cross-section natural heterogeneity (width and depth) along the reach: a natural variability of channel width exists, in relation to the presence of bars and curvatures, combined with a natural altimetric variability in cross-section, in relation to the presence of side or point bars, eventual high bars, islands (pioneer or mature), secondary channels, and natural banks. Or presence of alteration only on one side for $\leq 10\%$ of the total length of the banks (that is, the sum of both banks) (except for large channels, i.e. $W > 30$ m).
<b>B</b>	Presence of alteration of the cross-section natural heterogeneity (width and depth) for a limited portion of the reach ( $\leq 33\%$ of the reach length); or presence of alteration only on one side for $\leq 66\%$ of the total length of the banks (that is, the sum of both banks) (except for large channels, i.e. $W > 30$ m).
<b>C</b>	Presence of alteration of the cross-section natural heterogeneity (width and depth) for a significant portion of the reach ( $> 33\%$ ); or presence of alteration only on one side for $> 66\%$ of the total length of the banks (that is, the sum of both banks) (except for large channels, i.e. $W > 30$ m).

***F10: Structure of the channel bed***

**DEFINITION**

This indicator takes into account possible alterations of the bed sediment, such as armouring, clogging, substrate outcrops or bed revetments. Clogging refers to an excess of fine sediments causing interstitial filling of the coarse sediment matrix and potentially smothering the channel bed (“blanket”: [BRIERLEY & FRYIRS \(2005\)](#), or “embeddedness”: [SENNATT et al., 2008](#)).

<b>SPATIAL SCALE</b>	
<i>LONGITUDINAL</i> : Site	<i>LATERAL</i> : Channel
<b>MEASUREMENTS</b> : Field survey	

There are differences between the cases of confined channels and partly confined or unconfined channels. In the former case, armouring is not considered, as normally confined channels with a mobile bed (the indicator is not applied in the case of bedrock) have a naturally strong heterogeneity of sediments. Therefore, armouring is assessed only in the case of partly confined and unconfined channels.

A field evaluation is necessary for this indicator. The evaluation is concentrated at the scale of the representative **site**, although additional checks at other sites of the reach can be considered. A quantitative assessment of armouring requires sediment sampling and measurements of the surface layer and sub-layer, which are beyond the scope of this procedure. Therefore **armouring**, as well as **clogging**, are **visually assessed**. Only cases of evident and widespread clogging or armouring are taken into consideration. For example, the presence of clogging can be normal in particular situations (e.g. in the pools or along a stream close to hillslopes composed of clay), but it is considered an alteration when it is evident and present in various portions of the site. Two cases are considered: (1) where armouring or clogging is well marked and evident in various portions of the site, but not widespread along most of it (class *B*); (2) where there is well marked and evident armouring or clogging along the entire site ( $> 90\%$  of the site length) (class *C1*).

In the case of partly confined and unconfined channels, an additional element of alteration is **bedrock outcropping**. However, it requires careful evaluation: it is to be considered as alteration only when it is evidently related to bed-incision, that is, in alluvial reaches with a mobile bed far from the hillslopes, while it has to be excluded in those cases with hillslopes not far from the channel and where they can represent natural outcrops.

**EXTENDED ANSWERS**

<b>TPOLOGY</b>		CONFINED
<b>RANGE OF APPLICATION</b>		NOT EVALUATED FOR BEDROCK OR SAND-BED RIVERS, OR FOR DEEP RIVERS WHEN IT IS NOT POSSIBLE TO OBSERVE THE CHANNEL BED
<b>A</b>	Natural heterogeneity of bed sediments in relation to the different sedimentary units (steps, pools, riffles, etc.), with absence of or localized situations of clogging.	
<b>B</b>	Evident clogging in various portions of the site.	
<b>C1</b>	Evident and widespread clogging (> 90% of the site length).	
<b>C2</b>	Widespread substrate alteration by bed revetments (any type) (> 33% of the reach length).	

<b>TPOLOGY</b>		PARTLY CONFINED OR UNCONFINED
<b>RANGE OF APPLICATION</b>		NOT EVALUATED FOR BEDROCK OR SAND-BED RIVERS, OR FOR DEEP RIVERS WHEN IT IS NOT POSSIBLE TO OBSERVE THE CHANNEL BED
<b>A</b>	Natural heterogeneity of bed sediments in relation to the different sedimentary units (bars, channel bed, pools, riffles, etc.) and also within the same unit, with absence of or localized situations of armouring and/or clogging.	
<b>B</b>	Evident armouring or clogging in various portions of the site.	
<b>C1</b>	Evident and widespread (> 90%) armouring or clogging, or occasional substrate outcrops ( $\leq$ 33% of the reach length) due to incision of the alluvial substrate.	
<b>C2</b>	Widespread substrate outcrops (> 33% of the reach length) due to incision of the alluvial substrate or widespread substrate alteration by bed revetments (any type) (> 33% of the reach length).	

***F11: Presence of in-channel large wood***

**DEFINITION**

An evaluation is carried out to determine whether altered conditions exist compared to the expected presence of large wood along the reach. Large wood includes trees, trunks, branches, butts having a length > 1 m and diameter > 10 cm. This material has several effects on geomorphic-hydraulic processes, and has various implications on ecological processes (habitat diversity, input of organic matter, etc.). On the other hand, it is widely recognized that this material represents an important hydraulic hazard factor.

<b>SPATIAL SCALE</b>	
<i>LONGITUDINAL</i> : Site	<i>LATERAL</i> : Channel
<b>MEASUREMENTS</b> : Field survey	

The indicator is evaluated for both types of streams (confined and partly confined - unconfined). Given the high spatial and temporal variability of the quantity of wood material, it is not possible to define precise values for the number of woody elements to observe. Reaches are evaluated as altered when the presence of wood is extremely limited or completely absent (approximately < 5 elements every 100 m of channel length).

The operator will carry out the evaluation based on **field observations** at the **spatial scale of the site**. In some cases (large channels), remote sensing images can be useful. The evaluation area includes the channel (including islands) and the banks (wood on the floodplain is not considered). Additional rules accounting for particular situations of natural scarcity of wood are reported at the end of the Extended answers. Lastly, the indicator is not evaluated for reaches above the tree-line or where riparian vegetation is completely absent due to natural factors in the reach and in the upstream reaches.



**EXTENDED ANSWERS**

<b>TYOLOGY</b>	ALL TYOLOGIES
<b>RANGE OF APPLICATION</b>	NOT EVALUATED ABOVE THE TREE-LINE AND IN STREAMS WITH NATURAL ABSENCE OF RIPARIAN VEGETATION
<b>A</b>	Significant presence of large woody debris: the presence of large woody debris (plants, trunks, branches, butts) within the channel and/or on the banks.
<b>C</b>	Very limited presence or absence of large woody debris: when a significant presence of large woody debris is not observed within the channel (including islands) and/or on the banks.
<p>1) <i>In confined channels: in the case of bankfull width &gt; mean tree height, mean bankfull depth &gt; mean tree diameter, and in the absence of significant obstacles (e.g. large boulders), class A is assigned (reach of wood transport: natural absence).</i></p> <p>2) <i>In partly confined - unconfined: in the case of the absence of bars (lowland plain), the relative abundance of woody debris has to be evaluated near the banks.</i></p>	

**VEGETATION IN THE FLUVIAL CORRIDOR**

The following two indicators (*F12* and *F13*) concern the vegetation existing in the **river corridor** that includes the adjacent areas extending from the channel to the hillslopes, and that is functional to the normal geomorphic processes (flow resistance, bank stabilization, wood recruitment, sediment trapping, etc.). No ecological considerations are made on the type of vegetation (i.e. invasive species, etc.). Plantations with an industrial purpose (e.g. populus, eucalyptus, paulownia, etc.) are considered as partially functional, as they are characterized by markedly lower densities and consequently do not fully carry out their geomorphic functions. Therefore, lower scores are assigned to this type of vegetation. Other plantations of woody vegetation (e.g. olive tree, grape vine, apple tree, etc.) are not considered as functional.

It is necessary that the vegetation is connected with the channel, in relation to the geomorphic processes considered here (erosion, flooding). Therefore, vegetation external to **artificial levees** is completely excluded, whereas vegetation external to bank protections is taken into consideration as it may interfere with a number of processes (flow resistance, flooding, wood supply, etc.). In the case of confined channels, **roads** interrupt this connection (similarly to the artificial levees for unconfined channels).

Indicators *F12* and *F13* are not applied above the natural tree-line, which is quite variable on Italian territory (approximately around 1,800 ÷ 2,300 m a.s.l.). In many cases, grazing has lowered this limit: in such a case, it is considered as an alteration. Lastly, the indicators are not evaluated in cases of particular climatic conditions (e.g. along “*fiumare*” in Mediterranean regions) where woody vegetation is not able to colonize the river corridor.

***F12: Width of functional vegetation***

**DEFINITION**

This indicator assesses the average width (or areal extension) of **functional vegetation in the fluvial corridor** directly connected with the channel. In the case of confined channels, the functional width is evaluated up to a distance of 50 m from each bank, excluding the cases of near vertical hillslopes or the presence of landslides, where woody vegetation may be naturally absent. In the case of partly confined and unconfined channels, the width of functional vegetation is evaluated as a function of channel width.

<b>SPATIAL SCALE</b>	
<i>LONGITUDINAL</i> : Reach	<i>LATERAL</i> : Alluvial plain (partly confined / unconfined); Plain/ adjacent hillslopes (confined)
<b>MEASUREMENTS</b> : Remote sensing	

The evaluation is carried out by **remote sensing** and **GIS** analysis, by delimitating the woody/shrub vegetation in the river corridor, up to the limit of 50 m in the case of confined channels. Note that any islands present within the channel are included in the computation.

**EXTENDED ANSWERS**

TYPOLOGY	ALL TYPOLOGIES
<b>RANGE OF APPLICATION</b>	NOT EVALUATED ABOVE THE TREE-LINE AND IN STREAMS WITH NATURAL ABSENCE OF RIPARIAN VEGETATION
<b>A</b>	<p>High width of functional vegetation, that is:</p> <ul style="list-style-type: none"> <li>- for <i>CONFINED CHANNELS</i>, functional vegetation occupying &gt; 90% of adjacent plain (if present) and hillslopes (50 m from each bank, excluding portions with rock or landslides). The functional vegetation includes either woody species (with significant cover, i.e. &gt; 33% of the width) and spontaneous shrub species.</li> <li>- for <i>PARTLY CONFINED - UNCONFINED CHANNELS</i>, functional vegetation with a total width (sum of the two sides) of at least <math>nLa</math>, where <math>La</math> is the channel width, <math>n = 2</math> for single-thread channels, <math>n = 1</math> for multi-thread or wandering channels. The functional width includes either woody and shrub species, with a significant presence of the former (&gt; 33% of the width occupied by woody vegetation).</li> </ul>
<b>B</b>	<p>Medium width of functional vegetation, that is:</p> <ul style="list-style-type: none"> <li>- for <i>CONFINED CHANNELS</i>, functional vegetation occupying 33÷90% of adjacent plain (if present) and hillslopes (50 m from each bank, excluding portions with rock or landslides). Functional vegetation includes either woody species (with significant cover, i.e. &gt; 33% of the functional width) and spontaneous shrub species.</li> </ul> <p>Or, as in case <b>A</b>, but with largely prevailing shrub species (i.e. woody vegetation <math>\leq</math> 33% of the functional width).</p> <ul style="list-style-type: none"> <li>- for <i>PARTLY CONFINED - UNCONFINED CHANNELS</i>, functional vegetation with a total width (sum of the two sides) between <math>0.5 La</math> and <math>nLa</math>, where <math>La</math> is the channel width, <math>n = 2</math> for single-thread channels, <math>n = 1</math> for multi-thread or wandering channels.</li> </ul> <p>Or, as in case <b>A</b>, but where the width <math>&gt; nLa</math> is determined by the presence of partially functional species (e.g. artificial plantations of <i>populus</i>), or in the case of largely prevailing shrub species (i.e. woody vegetation <math>\leq</math> 33% of the functional width).</p>
<b>C</b>	<p>Limited width of functional vegetation, that is:</p> <ul style="list-style-type: none"> <li>- for <i>CONFINED CHANNELS</i>, functional vegetation <math>\leq</math> 33% of adjacent plain (if present) and hillslopes (50 m from each bank, excluding portions with rock or landslides). Functional vegetation includes either woody species (with significant cover, i.e. &gt; 33% of the functional width) and spontaneous shrub species.</li> </ul> <p>Or, as in case <b>B</b>, but with largely prevailing shrub species (i.e. woody vegetation <math>\leq</math> 33% of the functional width).</p> <ul style="list-style-type: none"> <li>- for <i>PARTLY CONFINED - UNCONFINED CHANNELS</i>, functional vegetation with a total width (sum of the two sides) <math>\leq 0.5 La</math> (any channel typology), where <math>La</math> is the channel width.</li> </ul> <p>Or, as in case <b>B</b>, but where the width <math>&gt; 0.5 La</math> is determined by the presence of partially functional species (e.g. artificial plantations of <i>populus</i>), or in the case of largely prevailing shrub species (i.e. woody vegetation <math>\leq</math> 33% of the functional width).</p>

***F13: Linear extension of functional vegetation***

**DEFINITION**

This indicator evaluates the longitudinal continuity of **functional vegetation along the banks**, as a percentage of the length covered by vegetation against the total length of the reach (both banks). Rows of trees for ornamental scopes are considered as partially functional, and they are assimilated to industrial plantations (see previous indicator).

SPATIAL SCALE	
<i>LONGITUDINAL</i> : Reach	<i>LATERAL</i> : Banks
<b>MEASUREMENTS</b> : Remote sensing	

The evaluation is carried out by **remote sensing** and **GIS** analysis. The same delimitation of woody/shrub vegetation in the river corridor carried out for *F12* will be used, measuring the length (sum of the two banks) at direct contact with the channel. Then, this length will be compared to the

total potential length (sum of the two banks) where functional vegetation can be present (i.e. excluding portions of banks with rock or landslides). In case of difficulties in the interpretation of remote images (confined channels), a check at the scale of the **site** may be required (e.g. to identify banks with rock).

**EXTENDED ANSWERS**

TYOPOLOGY	ALL TYOLOGIES
RANGE OF APPLICATION	NOT EVALUATED ABOVE THE TREE-LINE OR IN STREAMS WITH NATURAL ABSENCE OF RIPARIAN VEGETATION
<b>A</b>	Linear extension of functional vegetation for a length > 90% of maximum available length (i.e. sum of both banks excluding those in rock or landslides). Presence of either woody species (> 33% of the length of functional vegetation) or spontaneous shrub species.
<b>B</b>	Linear extension of functional vegetation for a length of 33÷90% of maximum available length (i.e. sum of both banks excluding those in rock or landslides). Or, as in case <b>A</b> , but the extension > 90% is determined by the presence of partially functional species (e.g. industrial plantations of <i>populus</i> or rows for ornamental purposes), or in the case of shrub species largely prevailing (woody species < 33% of the length of the functional vegetation).
<b>C</b>	Linear extension of functional vegetation for a length of ≤ 33% of maximum available length (i.e. sum of both banks excluding those in rock or landslides). Or, as in case <b>B</b> , but the extension > 33% is determined by the presence of partially functional species (e.g. industrial plantations of <i>populus</i> or rows for ornamental purposes), or in the case of shrub species largely prevailing (woody species < 33% of the length of the functional vegetation).

**ARTIFICIALITY**

**UPSTREAM ALTERATION OF LONGITUDINAL CONTINUITY**

The first four indicators of artificiality consider the alteration of the driving variables for channel morphology, which are water discharges and sediment transport. It is useful to conceptually separate the alterations of the same variables occurring upstream and within the reach. Indicators *A1* and *A2* are the only two concerned with the conditions existing upstream (catchment location scale) of the analyzed reach, while the next two indicators *A3* and *A4* concern the alterations of the same characteristics, but within the reach.

For this purpose, in the case of a **structure** (e.g. a dam) **located at the limit between two reaches** (e.g. between an upstream reach *n1* and a downstream reach *n2*), **conventionally the structure is assigned to the one upstream**. In other terms, the effects of the structure are considered as alterations in the reach (by the indicators *A3* and *A4*) for the upstream reach *n1*, while they are accounted as upstream alterations (by the indicators *A1* and *A2*) for the downstream reach *n2*.

***A1: Upstream alteration of flows***

**DEFINITION**

This indicator evaluates the possible alterations of channel-forming discharges and/or discharges with higher return intervals due to interventions at the catchment scale (dams, diversions, spillways, retention basins, etc.).

SPATIAL SCALE	
<i>LONGITUDINAL</i> : Catchment	<i>LATERAL</i> : Alluvial plain
MEASUREMENTS: Census of interventions, remote sensing	

Identification of existing interventions having effects on discharges can be carried out by a census of interventions and remote sensing. This indicator also requires data and information about the management of the structures (e.g. dams) and their effects on discharges. This can be achieved from agencies in charge of the river management. Note that this type of information and hydrologic data collected at the catchment scale is an essential part of the **Phase 1** (*general setting-up*), and this knowledge is then used for all the reaches of a given catchment.

Also note that this indicator can be estimated starting from the data required to calculate the Hydrological Regime Alteration Index, **IARI**, which provides a measure of the deviation between the observed hydrological regime and the natural regime in the absence of human intervention. The index **IARI** is obtained, dependent on available river discharge data quality and consistency, by comparing the daily and/or monthly discharges actually flowing through the cross section and the corresponding natural discharges. The integration of morphological and hydrological aspects allows for a complete definition and classification of stream hydromorphology.

To evaluate the indicator A1, **two classes of discharge** are considered: (1) channel-forming discharges; (2) discharges with a return interval > 10 years.

- (1) **Channel-forming discharges.** These are intended as the discharges having the most relevant effects on channel morphology. A value of  $Q_{1.5}$  is used here to represent the channel-forming discharges, however the range of discharges with important effects on channel morphology can be widened to return intervals of the order of 10 years. In fact, in braided or wandering morphologies, there are different values which can affect channel form, with islands being modelled by discharges with return interval up to 10 years. Furthermore, in case of steep and armoured mountain streams, only the discharges with return periods > 2 ÷ 3 years are able to determine relevant processes of sediment transport, and the morphological channel configuration is determined by even higher discharges.
- (2) **Discharges with return interval (RI) >10 years.** These also have relevant morphological and hydraulic effects, although their effect on channel morphology is lower than the channel-forming discharges. There are interventions which only have an effect on discharges with a high return interval, as they are designed to start working only above a given threshold (e.g. spillways, retention basins, some dams).

Data needed for estimating the discharges with given return intervals, and information to evaluate the effects of interventions on such discharges, are often not available. Therefore, **two procedures** can be considered, as follows.

**1. Data available.**

It is necessary to evaluate if and how much any interventions existing upstream in the catchment produce alterations on the channel-forming discharges and/or discharges with return interval >10 years.

- (1) **Channel-forming discharges.** Estimation of  $Q_{1.5}$  *ante* or *post operam* (or of other  $Q$  with  $RP$  between 1.5 and 10 years) can be obtained by a statistical analysis of a sufficiently long series of maximum annual peak discharges, from the closest gauging station to the reach, or on the basis of rainfall – runoff models or models of regionalization of discharges (these estimations are often available at the public agencies responsible for the river management). Normally, this analysis is performed only on the  $Q_{1.5}$ , but in some cases (e.g. braided rivers or mountain streams) further analysis on discharges with  $RP = 10$  years may be necessary. When there are significant changes (> 10%) in these discharges due to artificial interventions, the reach is assigned to class **C**.
  - *Example.* In the reach it is found that  $Q_{1.5} = 300 \text{ m}^3/\text{s}$  and a reservoir existing upstream has the effect of reducing this discharge by about  $60 \text{ m}^3/\text{s}$ .
- (2) **Discharges with  $RP > 10$  years.** In the case of interventions upstream working for this class of discharge and producing significant changes (> 10%), the reach is assigned to class **B**.
  - *Example.* Presence of a retention basin upstream designed to work only for discharges with  $RP > 20$  years, and producing a reduction of  $30 \text{ m}^3/\text{s}$ , compared to a  $Q_{20}$  estimated to be about  $150 \text{ m}^3/\text{s}$ .

**EXTENDED ANSWERS**

TYPOLOGY	ALL TYPOLOGIES
<b>A</b>	Absence of interventions altering water discharges (dams, spillways, diversions, retention basin, etc.) or interventions however with no significant effects (induced changes $\leq 10\%$ ) on channel-forming discharges and on discharges with $RP > 10$ years.
<b>B</b>	Presence of interventions (dams, spillways, diversions, retention basin, etc.) having significant effects (induced changes > 10%) on discharges with $RP > 10$ years, but with no significant effects ( $\leq 10\%$ ) on channel-forming discharges.
<b>C</b>	Presence of interventions (dams, spillways, diversions, retention basin, etc.) having significant effects (induced changes > 10%) on discharges with $RP > 10$ years and on channel-forming discharges.

**2. Data not available**

In such a case, a **simplified procedure** is adopted that is based on the typology of intervention and on available information about its use (e.g. dam for hydroelectric production or for retention purposes), described as follows.

**EXTENDED ANSWERS**

TYPOLOGY	ALL TYPOLOGIES
A	Absence of interventions altering water discharges or existence of interventions, but with no effects on channel-forming discharges and discharges with higher return intervals.
B	Presence of dams (watershed area > 5 % of the reach drainage area) with retention of peak discharges, or spillways or retention basins functioning only for infrequent discharges ( $RI > 10$ years).
C	Presence of dams (watershed area > 5 % of the reach drainage area) with retention of peak discharges, or spillways or retention basins functioning also for relatively frequent discharges ( $RI < 10$ years).

**A2: Upstream alteration of sediment discharges**

**DEFINITION**

An indirect evaluation of the alterations in sediment transport is obtained based on the existence in the catchment of main structures of bedload interception (dams, check dams, weirs) and in function of their drainage area compared to the reach drainage area.

SPATIAL SCALE	
LONGITUDINAL: Catchment	LATERAL: Channel
MEASUREMENTS: Census of interventions, remote sensing	

The degree of alteration in sediment discharges is evaluated as a function of two aspects: (1) the type of structure and its impact on bedload (i.e. full interception or partial interception, depending on the sediment filling); (2) the ratio between the drainage area upstream of the structures and the drainage area of the watershed at the section of the reach closure. Furthermore, some differences exist depending on the physiographic context (mountain areas, hilly areas, lowland).

Concerning the **typology of structures**, the following three cases are considered:

- **(T1) Dams.** They create a complete and permanent (in a future perspective) interception of bedload (except in the cases of measurements of sediment release downstream, which are accounted for).
- **(T2) Structures with total interception of bedload.** These determine a complete interception (e.g. not filled check dams of a significant size), but their impact is considered to be lower than dams, because of their temporary effect (until they are filled).
- **(T3) Structures with partial or no interception of bedload.** These are smaller sized structures, often with the purpose of bed stabilization rather than sediment retention, or also bigger structures (check dams) with the purpose of sediment retention but now completely filled by sediment.

Concerning the **drainage area** upstream of the structures as opposed to that upstream of the reach, the following cases are considered:

- (1)  $As \leq 5\% Ar$ , that is the area upstream from the structures ( $As$ ) is smaller than 5% of the area upstream of the reach ( $Ar$ ) (e.g. a dam upstream with a drainage area of 40 km<sup>2</sup> compared to a drainage area of the reach of 500 km<sup>2</sup>);
- (2)  $5\% Ar < As \leq 33\% Ar$ , that is the area upstream from the structures ( $As$ ) is between 5% and 33% of the area upstream the reach ( $Ar$ ) (e.g. a dam upstream with a drainage area of 40 km<sup>2</sup> compared to the reach's drainage area of 400 km<sup>2</sup>);
- (3)  $33\% Ar < As \leq 66\% Ar$ , that is the area upstream from the structures ( $As$ ) is between 33% and 66% of the area upstream of the reach ( $Ar$ ) (e.g. a dam upstream with a drainage area of 120 km<sup>2</sup> compared to the reach's drainage area of 200 km<sup>2</sup>);
- (4)  $As > 66\% Ar$ , that is the area upstream from the structures ( $As$ ) is > 66% of the area upstream from the reach ( $Ar$ ) (e.g. a dam upstream with a drainage area of 150 km<sup>2</sup> compared to the reach's drainage area of 200 km<sup>2</sup>);
- (5) The structure is located at the **upstream limit of the reach**.

The differences depending on the physiographic context are described as follows.

**1. Mountain areas.**

Structures included in the **category T2** are **check dams with total sediment retention** (retention check dams: usually of large dimensions). Usually these structures are characterized by a small reservoir immediately upstream. Included in this category are also **abstraction weirs of relevant size** (in the order of various meters), which are **not filled**, and which have the effect of a temporary complete interception (until filling) of bedload.

Structures included in the **category T3** can be identified with **filled retention check dams, open check dams, and consolidation check dams**. The latter are considered only when they are a long **sequence of stepped check dams**, determining the stabilization of the longitudinal bed profile. The drainage area is referred to the check dam furthest downstream. Therefore, isolated consolidation check dams that are unable to significantly reduce the upstream sediment supply are not considered.

Assignment to the alteration class as a function of typology and drainage areas is reported in [Table 2](#).

**Table 2** – Definition of classes in mountain areas.

TPOLOGY \ As/Ar	5÷33%	33÷66%	> 66%	UPSTREAM LIMIT
(T1) Dams	B1	B2	C1	C2
(T2) Check dams with total sediment retention	A	B1	B2	B2
(T3) Filled or open check dams or sequence of consolidation check dams	A	A	B1	B1

**2. Hilly and lowland areas.**

Structures included in the **category T2** can be identified with **consolidation check dams or abstraction weirs of relevant size** (in the order of several meters), which are **not filled**, and which have the effect of temporary complete interception (until filling) of bedload.

Structures in the **category T3** include **consolidation check dams or abstraction weirs**, but of a **smaller size**, or of a bigger size but **filled** with sediment.

Assignment to the alteration class as a function of typology and drainage areas is reported in [Table 3](#).

**Table 3** – Definition of classes in hilly or lowland areas.

TPOLOGY \ As/Ar	5÷33%	33÷66%	> 66%	UPSTREAM LIMIT
(T1) Dams	B1	B2	C1	C2
(T2) Consolidation check dams or abstraction weirs (big in size) with complete interception	A	B1	B2	B2
(T3) Consolidation check dams or abstraction weirs with partial or no interception (or small in size)	A	B1	B1	B1

**Measures of sediment release or removal.**

In the case of **measures of sediment release downstream from a dam** (or other structure), the score is reduced according to the following rules (in any physiographic context):

- (1) Measures allowing for the flux of *all bedload downstream* (complete by-pass): two classes lower are assigned (e.g. from C2 to B2, or from B1 to A).
- (2) Measures allowing for a *high but not total bedload flux downstream*: a class lower is assigned (e.g. from C2 to C1).

Vice versa, if the maintenance agency in charge of a structure carries out a periodic **sediment removal upstream from a check dam** (that is not released downstream) in order to prevent it from filling completely, the structure is considered as causing a complete interception of bedload (T2).

**EXTENDED ANSWERS**

TYPOLGY	ALL TYPOLOGIES
<b>A</b>	Absence of structures that can alter the normal flux of sediment along the hydrographic network, or presence of weirs and/or dams but with no significant effects. Dams are considered as not significant when $As \leq 5\% Ar$ , i.e. the area upstream from the structures ( $As$ ) is lower than 5% of the area upstream from the reach ( $Ar$ ). Other structures are considered as not significant when $As \leq 33\% Ar$ .
<b>B1</b>	Presence of a dam ( <i>any physiographic context</i> ) for $5\% Ar < As \leq 33\% Ar$ . - <i>Mountain areas</i> : one or more check dams not filled for $33\% Ar < As \leq 66\% Ar$ , or one or more open or filled check dams or a sequence of consolidation check dams for $As > 66\% Ar$ . - <i>Hilly or plain areas</i> : one or more consolidation check dams or abstraction weirs with complete interception (large sizes) for $33\% Ar < As \leq 66\% Ar$ , or one or more consolidation check dams or abstraction weirs with partial or no interception for $As > 33\% Ar$ .
<b>B2</b>	Presence of a dam ( <i>any physiographic context</i> ) for $33\% Ar < As \leq 66\% Ar$ . - <i>Mountain areas</i> : one or more check dams not filled for $As > 66\% Ar$ or at the upstream reach limit. - <i>Hilly or plain areas</i> : one or more consolidation check dams or abstraction weirs with complete interception (large sizes) for $As > 66\% Ar$ or at the upstream reach limit.
<b>C1</b>	Presence of a dam ( <i>any physiographic context</i> ) for $As > 66\% Ar$ .
<b>C2</b>	Presence of a dam at the upstream reach limit ( <i>any physiographic context</i> ).
<i>Measures of sediment release downstream: in case of measures allowing for the flux of all bedload downstream (complete by-pass), the structure is assigned to two classes lower. in case of measures allowing for a high but not total bedload flux downstream, the structure is assigned to one class lower.</i>	

**ALTERATION OF LONGITUDINAL CONTINUITY IN THE REACH**

***A3: Alteration of flows in the reach***

**DEFINITION**

This is evaluated in the same way as *A1*, but refers to interventions along the reach. Interventions include spillway, diversions, and retention basins. Dams are excluded as they are necessarily identified with the limit of a reach, therefore their effects in terms of the alteration of discharges is evaluated in the reach downstream

SPATIAL SCALE	
<i>LONGITUDINAL</i> : Reach	<i>LATERAL</i> : Alluvial plain
<b>MEASUREMENTS</b> : Census of interventions, remote sensing	

All the considerations made for *A1* are applied to this indicator, including two procedures (data available or not available), as follows.

**1. Data available.**

**EXTENDED ANSWERS**

TYPOLGY	ALL TYPOLOGIES
<b>A</b>	Absence of interventions altering water discharges (spillways, diversions, retention basin, etc.) or interventions but with no significant effects (induced changes $\leq 10\%$ ) on channel-forming discharges and on discharges with $RP > 10$ years.
<b>B</b>	Presence of interventions (spillways, diversions, retention basin, etc.) having significant effects (induced changes $> 10\%$ ) on discharges with $RP > 10$ years, but with no significant effects ( $\leq 10\%$ ) on channel-forming discharges.
<b>C</b>	Presence of interventions (spillways, diversions, retention basin, etc.) having significant effects (induced changes $> 10\%$ ) on discharges with $RP > 10$ years and on channel-forming discharges.



**2. Data not available.**

**EXTENDED ANSWERS**

TYOPOLOGY	ALL TYPOLOGIES
A	Absence of interventions altering water discharges or existence of interventions, but with no effects on channel-forming discharges and discharges with higher return intervals.
B	Presence of spillways, diversions or retention basins functioning only for infrequent discharges ( $RP > 10$ years).
C	Presence of spillways, diversions or retention basins functioning also for relatively frequent discharges ( $RP < 10$ years).

***A4: Alteration of sediment discharge in the reach***

**DEFINITION**

This is based on the typology and frequency of structures intercepting bedload in the reach (check dams, weirs, diversion structures, etc.) or other structures causing its alteration (e.g. retention basins, dam downstream).

SPATIAL SCALE	
<i>LONGITUDINAL</i> : Reach	<i>LATERAL</i> : Channel
<b>MEASUREMENTS</b> : Census of interventions, Remote sensing, Field survey	

In the case of a **dam located at the downstream limit of the reach**, as previously explained, its effects in terms of bedload interceptions are considered in the downstream reach by the indicator *A2*. However, the dam also alters the normal bedload flux for the portion of the reach immediately upstream from the structure (class C), by decreasing flow velocity and inducing sedimentation. If the artificial reservoir due to the dam is of a relevant size, it will not be subject to the assessment procedure (because the stream will have completely changed its original characteristics). Relevant size is normally intended to be equivalent to the spatial scale of a site (i.e. length not lower than 10 times the channel width). For reservoirs of a smaller size, they are included within the stream reach.

**EXTENDED ANSWERS**

TYOPOLOGY	ALL TYPOLOGIES
A	Absence of any type of structures altering sediment discharges: there are no structures in the reach aimed to intercept sediment and wood (check dams, abstraction weirs, etc.) or which cause an alteration of sediment discharges (retention basins, dam downstream) although not designed for this purpose.
B	<ul style="list-style-type: none"> <li>- <i>Mountain areas (confined channels, or partly confined - unconfined steep channels, e.g. along alluvial fans)</i>: consolidation check dams with relatively low density (<math>\leq 1</math> every 200 m on average in the reach) and/or one or more open check dams.</li> <li>- <i>Hilly – plain areas</i>: one or more consolidation check dam and/or abstraction weirs (<math>\leq 1</math> every 1000 m on average in the reach).</li> </ul>
C	<ul style="list-style-type: none"> <li>- <i>Mountain areas (confined channels, or partly confined - unconfined steep channels, e.g. along alluvial fans)</i>: consolidation check dams with relatively low density (<math>&gt;1</math> every 200 m on average in the reach) and/or one or more check dams.</li> <li>- <i>Hilly – plain areas</i>: one or more consolidation check dam and/or abstraction weir (<math>&gt;1</math> every 1000 m on average in the reach) and/or presence of a dam. And/or artificial reservoir at the downstream reach limit (<i>any physiographic context</i>).</li> </ul>
<i>If the total density of transversal structures, including bed sills and ramps (see A9) is very high, i.e. <math>&gt; 1</math> every 100 m in mountain areas, or <math>&gt;1</math> every 500 m in hilly – plain areas, <u>add 12</u>.</i>	

**A5: Crossing structures****DEFINITION**

This accounts for the presence and frequency of crossing structures, including bridges, fords, and culverts. Only **bridges** which interfere with the fluvial corridor are considered, that is, those bridges with some artificial element (piers or abutment) in the channel or adjacent plain, or potentially interfering with water fluxes although for exceptional flood events only. Bridges that are completely unrelated to the fluvial corridor are not counted (e.g. a viaduct crossing a valley markedly higher than the channel and with piers and/or abutments standing directly on hillslopes). Regarding **fords**, only those with fixed crossing structures are accounted for here (i.e. dirt roads are not considered). Finally, the cases where streams cross urban areas underground are considered as **culverts**.

SPATIAL SCALE	
<i>LONGITUDINAL</i> : Reach	<i>LATERAL</i> : Channel
MEASUREMENTS: Remote sensing, topographic maps, field survey	

**EXTENDED ANSWERS**

TYPOLOGY	ALL TYPOLOGIES
<b>A</b>	Absence of crossing structures (bridges, fords culverts).
<b>B</b>	Presence of some crossing structures ( $\leq 1$ every 1000 m on average in the reach).
<b>C</b>	Presence of many crossing structures ( $> 1$ every 1000 m on average in the reach).

**ALTERATION OF LATERAL CONTINUITY****A6: Bank protections****DEFINITION**

Various types of bank protection are considered, including walls, rip-raps gabions, groynes, and bioengineering bank stabilizations. The indicator is based on the percentage of protected banks over the total length (sum of both banks).

SPATIAL SCALE	
<i>LONGITUDINAL</i> : Reach	<i>LATERAL</i> : Banks
MEASUREMENTS: Census of interventions, remote sensing, field survey	

Only bank protections along the bank lines (which are the limits of the bankfull channel) or in the close surroundings are considered: bank protections built in past periods, at present far from the channel and therefore having no immediate effects on channel mobility are not assessed (they may be considered in the indicator *F5*, having the effect of limiting the erodible corridor).

A particular case is that of the **groynes**. Similarly to the previous rule, only groynes in contact or within the channel are considered. In the latter case, an evaluation of the greater size between the groyne width and the protruding length is obtained (generally from aerial photos).

**EXTENDED ANSWERS**

TYPOLOGY	ALL TYPOLOGIES
<b>A</b>	Absence or localized presence of bank protections, i.e. for a length $\leq 5\%$ total length of the banks (sum of both banks).
<b>B</b>	Presence of protections for $\leq 33\%$ total length of the banks (sum of both banks).
<b>C</b>	Presence of protections for $> 33\%$ total length of the banks (sum of both banks).
<i>In the case of bank protections along most of the reach (i.e. <math>&gt;80\%</math> of total length of the banks) <u>add 12</u>.</i>	

**A7: Artificial levees**

**DEFINITION**

This indicator accounts for the presence of artificial levees (or embankments). It is based on their longitudinal continuity and distance from the channel.

SPATIAL SCALE	
LONGITUDINAL: Reach	LATERAL: Alluvial plain
MEASUREMENTS: Remote sensing, topographic maps, field survey	

Regarding the **length**, the percentage of the artificial levee’s length over the total length of the banks is considered (similarly to the previous indicator) though, in this case, the length of banks directly in contact with hillslopes is excluded. Regarding the **distance**, three possible cases are considered: (1) “*distant*” (set-back embankments): in case of distance  $>$  of the mean channel width ( $W$ ); (2) “*close*”: in case of distance  $\leq W$ ; (3) “*in contact*”: when they are immediately in contact with the top of the bank, or maximum at a distance of the same order of magnitude as the bank height. Selection of the class is made according to the extended answers and [Table 4](#). Note that the calculation is made separately for the two river sides: e.g. in the case of a left bank with 100% in contact and a right bank with 20% in contact and 80% close, the total in the reach will be 60% in contact and 40% close.

In the case of **two artificial levee systems**, the distance will be referred to the levees closest to the channel.

**Table 4** – Definition of classes as a function of the length of levees *in contact* and *close* (in % over the total length of both banks).

CLASS	IN CONTACT + CLOSE [%]	IN CONTACT [%]
A	0÷10	0÷10
B	10÷90	0÷50
	90÷100	0÷33
C	50÷90	50÷90
	90÷100	33÷100

**EXTENDED ANSWERS**

TYOLOGY	PARTLY CONFINED OR UNCONFINED
A	Levees absent or distant (i.e. distance $> W$ ) for any length, or localized presence of close levees and/or in contact ( $\leq 10\%$ of the total length of the banks).
B	Close levees and/or levees in contact for $> 10\%$ of the total length of the banks, including the following cases: (a) levees in contact for $\leq 50\%$ (independently from % of close levees); (b) if the total length of close levees plus those in contact is $> 90\%$ , then levees in contact must be $\leq 33\%$ of the total length of the banks.
C	Close levees or levees in contact not included in the previous class, that is: (a) levees in contact $> 50\%$ (independently by % of close levees); (b) total length close and in contact levees $> 90\%$ , with levees in contact $> 33\%$ of the total length of the banks.
<i>In the case of artificial levees along most of the reach (i.e. <math>&gt; 80\%</math> of total length of the banks) <a href="#">add 12</a>.</i>	

**ALTERATION OF CHANNEL MORPHOLOGY AND/OR SUBSTRATE**

**A8: Artificial changes of river course**

**DEFINITION**

This indicator accounts for historical changes in the river course. It has to be remarked that this indicator does not require a historical research of channel changes, which would be out of the range of

this evaluation, but only well known and relevant changes should be considered (e.g. meander cut-off, change of position of river mouth, etc.).

SPATIAL SCALE	
<i>LONGITUDINAL</i> : Reach	<i>LATERAL</i> : Alluvial plain
<b>MEASUREMENT</b> : Historical sources and/or remote sensing	

**EXTENDED ANSWERS**

TYOLOGY	PARTLY CONFINED OR UNCONFINED
<b>A</b>	Absence of artificial changes of river course in the past (meanders cut-off, channel diversions, etc.);
<b>B</b>	Presence of artificial changes of river course in the past for $\leq 10\%$ of the reach length;
<b>C</b>	Presence of artificial changes of river course in the past for $> 10\%$ of the reach length.

***A9: Other bed stabilization structures***

**DEFINITION**

With this indicator other crossing structures (bed sills, ramps) and revetments of the channel bed are considered, accounting for their frequency or percentage and typology (permeable or impermeable) respectively for sills/ramps and revetments.

SPATIAL SCALE	
<i>LONGITUDINAL</i> : Reach	<i>LATERAL</i> : Channel
<b>MEASUREMENTS</b> : Census of interventions, remote sensing, field survey	

**EXTENDED ANSWERS**

TYOLOGY	ALL TYPOLOGIES
<b>A</b>	Absence of other bed stabilization structures (bed sills, ramps) and/or localized revetments ( $\leq 5\%$ of the reach length) not altering significantly the vertical continuity and bed structure.
<b>B</b>	Presence of bed sills and/or ramps with relatively low density, i.e. $\leq 1$ every $n$ m on average along the reach, where $n = 200$ for confined and mountain partly confined - unconfined streams (e.g. piedmont alluvial fans) or $n = 1000$ for partly confined - unconfined streams of lowland plains or hilly areas, and/or limited presence of revetments: bed revetments occupy a length $\leq 25\%$ of the reach with permeable systems and/or $\leq 15\%$ with impermeable systems.
<b>C1</b>	Presence of bed sills/ramps with a density of $> 1$ every $n$ m on average in the reach and/or significant presence of revetments: bed revetments occupy a length $\leq 50\%$ of the reach with permeable systems and/or $\leq 33\%$ with impermeable systems.
<b>C2</b>	Widespread presence of revetments: bed revetments occupy a length $> 50\%$ of the reach with permeable systems or $> 33\%$ with impermeable systems.
<p>1) <i>If the density of transversal structures, including check dams and abstraction weirs (see A4) is extremely high, i.e. <math>&gt;1</math> every 100 m for confined and mountain partly confined - unconfined streams, or <math>&gt;1</math> every 500 m for partly confined - unconfined streams of lowland plains or hilly areas, <u>add 12</u>.</i></p> <p>2) <i>If bed revetments (either permeable and impermeable) occupy most of the reach length (i.e. <math>&gt;80\%</math>), <u>add 12</u>.</i></p>	

**INTERVENTIONS OF MAINTENANCE AND REMOVAL**

***A10: Sediment removal***

**DEFINITION**

This indicator aims to provide an evaluation on the existence and relative intensity of sediment mining activity.

SPATIAL SCALE	
<i>LONGITUDINAL</i> : Reach	<i>LATERAL</i> : Channel
<b>MEASUREMENTS</b> : Census of interventions, remote sensing, field survey	

The evaluation is slightly different from **confined** to **partly confined - unconfined channels**. In the former case, the investigated time period is exclusively that of the **last 20 years** (coherently with the following two indicators). The difference between the three classes is determined by the extension of any removal activity (absent, localized, widespread in the reach) during this time period. In the case of partly confined - and unconfined channels, two time periods are distinguished: (a) recent activity (last 20 years, as for confined channels); (b) **past activity**, extended to the 1950s (generally the decade of maximum activity in many areas of Italy). Regarding past activity, the indicator intends to provide a gross evaluation based on available information, since a quantification of extracted volumes is not possible. To this aim, **three situations** are considered: (1) absent; (2) moderate: when there is reliable information that the number of mining sites and the extracted volumes are significant (not negligible) but not high; (3) intense: when there is reliable information that the number of mining sites and the extracted volumes are particularly relevant. Indirect indicators of intense activity may be the number of mining sites nowadays or in the past (from aerial photos of the 1950s) in the surroundings of the river channel, intense incisions (see *CA3*) that are attributable to mining activity, etc.

**EXTENDED ANSWERS**

TPOLOGY	CONFINED
<b>A</b>	Evidence/reliable information of absent significant sediment removal activity during the last 20 years.
<b>B</b>	Evidence/reliable information of significant but localized (only one site) sediment removal activity during the last 20 years.
<b>C</b>	Evidence/reliable information of significant and widespread (more sites along the reach) sediment removal activity during the last 20 years.

TPOLOGY	PARTLY CONFINED OR UNCONFINED
<b>A</b>	Absence of significant sediment removal activity either in the past (from 1950s) or during about the last 20 years.
<b>B</b>	Moderate sediment removal activity in the past (from 1950s) but absent during about the last 20 years, or sediment removal activity during the last 20 years but absent in the past.
<b>C</b>	Intense sediment removal activity in the past (from 1950s), or sediment removal activity during the last 20 years and moderate in the past (from 1950s).

***All: Wood removal***

**DEFINITION**

Wood removal can periodically be carried out by various public agencies in charge of river management and maintenance, usually in conjunction with cutting vegetation (see next indicator) and/or sediment removal. Typically, only larger sized woody material is removed, while fine woody debris (small trunks, branches) is left in the channel.

Wood removal is justifiable for safety reasons, however has a significant impact on the fluvial system (e.g. reduction of hydrodynamic complexity, and therefore morphological and sedimentary diversity, with the disappearance of physical habitats for fishes and invertebrates).

SPATIAL SCALE	
<i>LONGITUDINAL</i> : Reach	<i>LATERAL</i> : Channel and floodplain
<b>MEASUREMENTS</b> : Information by public agencies	

For this indicator, it is necessary to acquire information on total or partial wood removal during the last 20 years. This time interval is motivated both by the availability of information from public agencies, and by the natural capability of streams to once again achieve a sufficient quantity of wood from the banks, hillslopes and upstream reaches. In case of a lack of reliable information, the answer is *B*. Cases where *F11* has not been applied are not evaluated.

**EXTENDED ANSWERS**

<b>TPOLOGY</b>	ALL TYPOLOGIES
<b>RANGE OF APPLICATION</b>	NOT EVALUATED ABOVE THE TREE-LINE AND IN STREAMS WITH NATURAL ABSENCE OF RIPARIAN VEGETATION
<b>A</b>	Reliable information/evidence of the absence (or only in localized situations) of interventions for the removal of large wood (diameter > 10 cm and length > 1 m), at least in the last 20 years.
<b>B</b>	Reliable information/evidence of partial removal interventions during the last 20 years, that is, the removal of some elements only, often following flood events. Here are also included the cases of permission for removal by private citizens, even without any intervention from public agencies. Some woody material could be cut into elements < 1 m and left within the channel.
<b>C</b>	Reliable information/evidence of removal interventions by public agencies during the last 20 years. Some woody material could be cut into elements < 1 m and left within the channel.

***A12: Vegetation management***

**DEFINITION**

Similarly to the previous indicator, periodic interventions of vegetation cutting by public agencies are motivated by safety reasons, but they have various impacts on the natural processes related to riparian vegetation. In order to reduce such impacts, public agencies are recently oriented towards selective cutting (involving only the oldest trees) rather than a total removal. Note that grazing activity is here assimilated to vegetation cutting, as it prevents vegetation growth.

<b>SPATIAL SCALE</b>	
<i>LONGITUDINAL</i> : Site/Reach	<i>LATERAL</i> : channel and portions of alluvial plain (partly confined - unconfined) adjacent to the banks, or adjacent plain / hillslopes (confined)
<b>MEASUREMENTS</b> : Information from public agencies and field site check (presence of butts)	

The operator has to collect information from the public agencies responsible for the vegetation management, and to observe in the field any possible evidence of past cuttings (i.e. presence of butts). The indicator is applied in the case of significant cutting activity (just a few plants cut along the reach are not considered). The investigated area corresponds to the width of functional vegetation identified with the indicator *F12*. For the same reasons as for the previous indicator, the time interval considered includes the last 20 years. The indicator is not applied for those reaches where *F12* and *F13* have not been evaluated.

**EXTENDED ANSWERS**

<b>TPOLOGY</b>	ALL TYPOLOGIES
<b>RANGE OF APPLICATION</b>	NOT EVALUATED ABOVE THE TREE-LINE AND IN STREAMS WITH NATURAL ABSENCE OF RIPARIAN VEGETATION
<b>A</b>	Vegetation not subject to cutting interventions along the banks, or only affected by selective cutting within the areas external to the banks (alluvial plain for partly confined - unconfined, hillslopes for confined) during the last 20 years.
<b>B</b>	Vegetation subject to interventions of selective cutting along the banks for any distance, or total cutting for a length < 50% of the reach; or total cuttings of any distance within the areas external to the banks (last 20 years).
<b>C</b>	Vegetation subject to total cutting along the banks for a distance > 50% of the reach during the last 20 years.

## CHANNEL ADJUSTMENTS

### *CA1: Adjustments in channel pattern*

#### **DEFINITION**

This indicator (and the following *CA2*) is based on observation and analysis of aerial photos from the 1950s, compared to the most recent aerial photos. It evaluates whether there has been a change in the morphological type.

SPATIAL SCALE	
<i>LONGITUDINAL</i> : Reach	<i>LATERAL</i> : Alluvial plain
<b>MEASUREMENTS</b> : Remote sensing / GIS analysis	

As for all the indicators of channel adjustments, it is applied only to large channels (width > 30 m, at present or in the 1950s). In Italy, aerial photos of the 1950s correspond to the flight IGM GAI covering the entire national territory, at a scale of about 1:33,000. In other countries, flights from the same period can be used. It applies both to confined and partly confined - unconfined, although some differences in the classes exist.

In the cases of partly confined - unconfined channels, the assignation to classes *B* or *C* depends on whether the change has occurred between similar morphologies (e.g. from meandering to sinuous) or between markedly different morphologies (e.g. from braided to sinuous), as defined in [Table 5](#).

**Table 5** – Classes for the different possible adjustments in channel morphologies. MORPHOLOGIES: *ST* = straight, *S* = sinuous, *M* = Meandering, *SAB* = Sinuous with Alternate Bars, *W* = Wandering, *B* = Braided, *A* = Anastomosed;  $\Leftrightarrow$  = change in both directions. CLASS: *B* = change to a similar morphology; *C* = change to a markedly different morphology.

MORPHOLOGY	CLASS	MORPHOLOGY	CLASS
<i>ST</i> $\Leftrightarrow$ <i>S</i>	<i>B</i>	<i>M</i> $\Leftrightarrow$ <i>SAB</i>	<i>B</i>
<i>ST</i> $\Leftrightarrow$ <i>M</i>	<i>C</i>	<i>M</i> $\Leftrightarrow$ <i>W</i>	<i>C</i>
<i>ST</i> $\Leftrightarrow$ <i>SAB</i>	<i>B</i>	<i>M</i> $\Leftrightarrow$ <i>B</i>	<i>C</i>
<i>ST</i> $\Leftrightarrow$ <i>W</i>	<i>C</i>	<i>M</i> $\Leftrightarrow$ <i>A</i>	<i>B</i>
<i>ST</i> $\Leftrightarrow$ <i>B</i>	<i>C</i>	<i>SAB</i> $\Leftrightarrow$ <i>W</i>	<i>B</i>
<i>ST</i> $\Leftrightarrow$ <i>A</i>	<i>C</i>	<i>SAB</i> $\Leftrightarrow$ <i>B</i>	<i>C</i>
<i>S</i> $\Leftrightarrow$ <i>M</i>	<i>B</i>	<i>SAB</i> $\Leftrightarrow$ <i>A</i>	<i>C</i>
<i>S</i> $\Leftrightarrow$ <i>SAB</i>	<i>B</i>	<i>W</i> $\Leftrightarrow$ <i>B</i>	<i>B</i>
<i>S</i> $\Leftrightarrow$ <i>W</i>	<i>C</i>	<i>W</i> $\Leftrightarrow$ <i>A</i>	<i>C</i>
<i>S</i> $\Leftrightarrow$ <i>B</i>	<i>C</i>	<i>B</i> $\Leftrightarrow$ <i>A</i>	<i>C</i>
<i>S</i> $\Leftrightarrow$ <i>A</i>	<i>B</i>		



**EXTENDED ANSWERS**

<b>TPOLOGY</b>	CONFINED
<b>RANGE OF APPLICATION</b>	EVALUATED ONLY FOR LARGE CHANNELS (CHANNEL WIDTH > 30 m)
<b>A</b>	Absence of changes of channel pattern from 1950s.
<b>B</b>	Change of channel pattern from 1950s.

<b>TPOLOGY</b>	PARTLY CONFINED OR UNCONFINED
<b>RANGE OF APPLICATION</b>	EVALUATED ONLY FOR LARGE CHANNELS (CHANNEL WIDTH > 30 m)
<b>A</b>	Absence of changes of channel pattern from 1950s.
<b>B</b>	Change to a similar channel pattern from 1950s ( <a href="#">Table 5</a> ).
<b>C</b>	Change to a different channel pattern from 1950s ( <a href="#">Table 5</a> ).

***CA2: Adjustments in channel width***

**DEFINITION**

This indicator evaluates the occurrence and amount of changes in channel width from the 1950s to now.

<b>SPATIAL SCALE</b>	
<i>LONGITUDINAL</i> : Reach	<i>LATERAL</i> : Alluvial plain
<b>MEASUREMENTS</b> : Remote sensing / GIS analysis	

As for the previous indicator, this indicator is applied only to large channels (width >30 m, at present or in the 1950s), both to confined and partly confined - unconfined, although some differences in the classes exist. In confined channels, only two classes are defined (in fact significant change in channel width would determine a change to an unconfined channel). The precise measurement of changes in channel width requires a GIS analysis, including the georectification of the different images, the digitizing of channel margins and the measurement of the channel width.

**EXTENDED ANSWERS**

<b>TPOLOGY</b>	CONFINED
<b>RANGE OF APPLICATION</b>	EVALUATED ONLY FOR LARGE CHANNELS (CHANNEL WIDTH > 30 m)
<b>A</b>	Absent or limited changes in channel width ( $\leq 15\%$ ) from 1950s.
<b>B</b>	Changes in channel width $> 15\%$ from 1950s.

<b>TPOLOGY</b>	PARTLY CONFINED OR UNCONFINED
<b>RANGE OF APPLICATION</b>	EVALUATED ONLY FOR LARGE CHANNELS (CHANNEL WIDTH > 30 m)
<b>A</b>	Absent or limited changes in channel width ( $\leq 15\%$ ) from 1950s.
<b>B</b>	Moderate changes in channel width ( $15\div 35\%$ ) from 1950s.
<b>C</b>	Intense changes in channel width ( $> 35\%$ ) from 1950s.

**CA3: Bed-level adjustments**

**DEFINITION**

Bed-level adjustments (incision or aggradation) are considered among the most relevant physical alterations affecting a number of processes (e.g. lateral connection with floodplain, alteration of in-channel habitats, etc.).

SPATIAL SCALE	
LONGITUDINAL: Reach	LATERAL: Channel
MEASUREMENTS: Data from cross-sections / longitudinal profiles, field survey	

Similarly to CA1 and CA2, this indicator applies only to large channels (width > 30 m), both to confined and partly confined - unconfined with some differences. In the case of partly confined - unconfined channels, a class C2 is defined to account for cases of dramatic changes in bed elevation (> 6 m). Small-sized mountain streams may experience intense bed-level changes during exceptional flood events; however this indicator is not envisaged for such streams, coherently with the other two indicators of channel changes. This indicator is based on existing data (e.g. longitudinal profiles or cross sections), information from existing literature, and field evidence of bed-level changes. Differently from planimetric changes, in this case bed-level changes are referred to a wider temporal scale, i.e. about the last 100 years. This is due to the fact that, according to existing research on a national scale (e.g. [SURIAN & RINALDI, 2003](#); [SURIAN et al., 2009d](#)), one or more phases of incision followed by a period of predominant aggradation or equilibrium occurred until about the end of the 19<sup>th</sup> century. This simplification allows a better utilization of field evidence, consisting of an evaluation of the differences in elevation between modern floodplain and recent terraces, the latter coinciding with the historical floodplain before the incision. In the cases of an absolute lack of data, field evidence or other sources of information, this indicator is omitted and is not included in the final score.

**EXTENDED ANSWERS**

TYOPOLOGY	CONFINED
RANGE OF APPLICATION	EVALUATED ONLY FOR LARGE CHANNELS (CHANNEL WIDTH > 30 m)
<b>A</b>	Negligible bed-level changes ( $\leq 0.5$ m).
<b>B</b>	Limited or moderate bed-level changes ( $0.5 \div 3$ m).
<b>C</b>	Intense bed-level changes ( $> 3$ m).

TYOPOLOGY	PARTLY CONFINED OR UNCONFINED
RANGE OF APPLICATION	EVALUATED ONLY FOR LARGE CHANNELS (CHANNEL WIDTH > 30 m)
<b>A</b>	Negligible bed-level changes ( $\leq 0.5$ m): bed elevation unchanged due to altimetric stability or to recovery by aggradation of a previous phase of incision (e.g. due to a weir).
<b>B</b>	Limited or moderate bed-level changes ( $\leq 3$ m). Incised channel: differences in elevation exist between new floodplain (if existing) and recent terraces, but in many cases not evident. Aggraded channel: bed-elevation higher than floodplain elevation.
<b>C1</b>	Intense bed-level changes ( $3 \div 6$ m). Highly incised channel: very evident differences in elevation between new floodplain (if existing) and recent terraces, with the presence of evidence in several forms , including high and unstable banks, destabilization of transversal structures, exposed bridge piers, etc. Highly aggraded channel: marked differences in elevation between channel bed (much higher) and floodplain.
<b>C2</b>	Very intense bed-level changes ( $> 6$ m). Exceptionally incised channel (e.g. following intense mining activity in the past). Usually, as well as the aforementioned evidence, data or reliable information about such an important incision will exist. Exceptionally aggraded channel.

## SCORES

For each indicator, the **partial score** relative to classes *A*, *B* or *C* must be circled in the apposite column on the right (first column on the right side of the answers). In the following column, the **progressive score** is reported, so that the total deviation is immediately available at the end of the compilation of the evaluation form. In the last column on the right (inside the dotted lines), operator should express a **degree of confidence** in the answer, considering three possible cases: (1) *High*, (2) *Medium*, (3) *Low*. This can be indicated between class *A* and *B*, or between *B* and *C*. A simplified estimation of the overall uncertainty degree associated with the final evaluation can be obtained that is the range of variation of the final score. An example of the procedure can be visualized in the **compiled evaluation form** (see later).

On the bottom of the evaluation form, the Morphological Alteration Index and the Morphological Quality Index are calculated.

The **Morphological Alteration Index (MAI)** is calculated as:

$$MAI = S_{tot} / S_{max}$$

where  $S_{max}$  is the maximum possible deviation for the given stream typology (it corresponds to the sum of the class C scores for all the questions applicable to the study case).

The **Morphological Quality Index (MQI)** is expressed as:

$$MQI = 1 - MAI$$

## SUB-INDICES

Given the structure divided into various aspects and categories, it is possible to calculate a series of sub-indices, that is, to sub-divide the two main indices *MAI* and *MQI* into their components. This can be useful for identifying the negative and positive points of a reach.

The **functionality**, **artificiality** and **channel changes sub-indices** (or “vertical sub-indices”) can be obtained as follows:

---

### 1. FUNCTIONALITY

$$MAI_F = S_F tot / S_{max}$$

$$MQI_F = (S_F max / S_{max}) - MAI_F = (S_F max - S_F tot) / S_{max}$$

Where

$$S_F tot = F1 + \dots + F13 \quad (\text{sum of scores of applied } F \text{ indicators});$$

$$Max(S_F tot) = Max(F1) + \dots + Max(F13) \quad (\text{sum of maximum scores of all } F \text{ indicators});$$

$$Max(S_A tot) = Max(A1) + \dots + Max(A12) \quad (\text{sum of maximum scores of all } A \text{ indicators});$$

$$Max(S_{CA} tot) = Max(CA1) + \dots + Max(CA3) \quad (\text{sum of maximum scores of all } CA \text{ indicators});$$

$$Max(S_{tot}) = Max(S_F tot) + Max(S_A tot) + Max(S_{CA} tot) \quad (\text{sum of maximum scores of all indicators});$$

$$Sna(F) = \text{sum of maximum scores of not applied } F \text{ indicators};$$

$$Sna = \text{sum of maximum scores of not applied } F, A, CA \text{ indicator};$$

$$S_F max = Max(S_F tot) - Sna(F);$$

$$S_{max} = Max(S_{tot}) - Sna.$$

---

### 2. ARTIFICIALITY

$$MAI_A = S_A tot / S_{max}$$

$$MQI_A = (S_A max / S_{max}) - MAI_A = (S_A max - S_A tot) / S_{max}$$

Where:

$$S_{A\text{tot}} = A1 + \dots + A12 \quad (\text{sum of scores of applied } A \text{ indicators});$$

$$\text{Max}(S_{F\text{tot}}) = \text{Max}(F1) + \dots + \text{Max}(F13) \quad (\text{sum of maximum scores of all } F \text{ indicators});$$

$$\text{Max}(S_{A\text{tot}}) = \text{Max}(A1) + \dots + \text{Max}(A12) \quad (\text{sum of maximum scores of all } A \text{ indicators});$$

$$\text{Max}(S_{CA\text{tot}}) = \text{Max}(CA1) + \dots + \text{Max}(CA3) \quad (\text{sum of maximum scores of all } CA \text{ indicators});$$

$$\text{Max}(S_{\text{tot}}) = \text{Max}(S_{F\text{tot}}) + \text{Max}(S_{A\text{tot}}) + \text{Max}(S_{CA\text{tot}}) \quad (\text{sum of maximum scores of all indicators});$$

$$S_{na(A)} = \text{sum of maximum scores of not applied } A \text{ indicators};$$

$$S_{na} = \text{sum of maximum scores of not applied } F, A, CA \text{ indicator};$$

$$S_{A\text{max}} = \text{Max}(S_{A\text{tot}}) - S_{na(A)};$$

$$S_{\text{max}} = \text{Max}(S_{\text{tot}}) - S_{na}.$$

3. **CHANNEL ADJUSTMENTS**

$$MAI_{CA} = S_{CA\text{tot}}/S_{\text{max}}$$

$$MQI_{CA} = (S_{CA\text{max}}/S_{\text{max}}) - MAI_{CA} = (S_{CA\text{max}} - S_{CA\text{tot}}) / S_{\text{max}}$$

Where:

$$S_{CA\text{tot}} = CA1 + \dots + CA3 \quad (\text{sum of scores of applied } CA \text{ indicators});$$

$$\text{Max}(S_{F\text{tot}}) = \text{Max}(F1) + \dots + \text{Max}(F13) \quad (\text{sum of maximum scores of all } F \text{ indicators});$$

$$\text{Max}(S_{A\text{tot}}) = \text{Max}(A1) + \dots + \text{Max}(A12) \quad (\text{sum of maximum scores of all } A \text{ indicators});$$

$$\text{Max}(S_{CA\text{tot}}) = \text{Max}(CA1) + \dots + \text{Max}(CA3) \quad (\text{sum of maximum scores of all } CA \text{ indicators});$$

$$\text{Max}(S_{\text{tot}}) = \text{Max}(S_{F\text{tot}}) + \text{Max}(S_{A\text{tot}}) + \text{Max}(S_{CA\text{tot}}) \quad (\text{sum of maximum scores of all indicators});$$

$$S_{na(CA)} = \text{sum of maximum scores of not applied } CA \text{ indicators};$$

$$S_{na} = \text{sum of maximum scores of not applied } F, A, CA \text{ indicator};$$

$$S_{CA\text{max}} = \text{Max}(S_{CA\text{tot}}) - S_{na(CA)};$$

$$S_{\text{max}} = \text{Max}(S_{\text{tot}}) - S_{na}.$$

To make the analysis more effective, the sub-indices can be related to the maximum value that they can reach for a given category (functionality, artificiality, channel changes). For this purpose, the overall value of *MAI* and *MQI* is divided in the part relative to each category as follows:

1. **FUNCTIONALITY**

$$MAI_{F\text{max}} = MQI_{F\text{max}} = S_{F\text{max}}/S_{\text{max}}$$

2. **ARTIFICIALITY**

$$MAI_{A\text{max}} = MQI_{A\text{max}} = S_{A\text{max}}/S_{\text{max}}$$

3. **CHANNEL ADJUSTMENTS**

$$MAI_{CA\text{max}} = MQI_{CA\text{max}} = S_{CA\text{max}}/S_{\text{max}}$$

Note that, in case of additional scores for the indicators *A4*, *A6*, *A7*, *A9* such that *Stot* > *Smax*, the sum of the three sub-indices *MAI<sub>F</sub>*+*MAI<sub>A</sub>*+*MAI<sub>CA</sub>* is >1.

Similarly, **continuity**, **morphology** and **vegetation sub-indices** (or “horizontal sub-indices”) can be obtained. For this purpose, some element of artificiality needs to be shared in more categories: in such cases the score assigned to a given indicator is simply divided by the number of categories. The sub-indices are defined as follows.

1. **CONTINUITY**

$$MAI_C = MAI_{CL} + MAI_{CLA}$$

$$MQI_C = MQI_{CL} + MQI_{CLA}$$

Where:

*C* is for continuity, *CL* is for longitudinal continuity and *CLA* is for lateral continuity

**1.1. LONGITUDINAL CONTINUITY**

$$MAI_{CL} = (F1+A1+A2+A3+A4/2+A5)/Smax$$

$$MQI_{CL} = (S_{CL} max/Smax) - MAI_{CL}$$

Where:

$$S_{CL} max = Max(S_{CL} tot) - Sna_{(CL)};$$

$$Max(S_{CL} tot) = Max(F1)+Max(A1)+Max(A2)+Max(A3)+Max(A4/2)+ Max(A5)$$

(sum of maximum scores of all CL indicators);

$$Sna_{(CL)} = \text{sum of maximum scores of not applied CL indicators.}$$

**1.2. LATERAL CONTINUITY**

$$MAI_{CLA} = (F2+F3+F4+F5+A6/2+A7)/Smax$$

$$MQI_{CLA} = (S_{CLA} max/Smax) - MAI_{CLA}$$

Where:

$$S_{CLA} max = Max(S_{CLA} tot) - Sna_{(CLA)};$$

$$Max(S_{CLA} tot) = Max(F2)+Max(F3)+Max(F4)+Max(F5)+Max(A6/2)+ Max(A7)$$

(sum of maximum scores of all CLA indicators);

$$Sna_{(CLA)} = \text{sum of maximum scores of not applied CLA indicators.}$$

**2. MORPHOLOGY**

$$MAI_M = MAI_{CM} + MAI_{CS} + MAI_S$$

$$MQI_M = MQI_{CM} + MQI_{CS} + MQI_S$$

Where:

*M* is for morphology, *CM* is for morphological pattern, *CS* is for cross-section configuration and *S* is for substrate.

**2.1. MORPHOLOGICAL PATTERN**

$$MAI_{CM} = (F6+F7+F8+A6/2+A8+CA1)/Smax$$

$$MQI_{CM} = (S_{CM} max/Smax) - MAI_{CM}$$

Where:

$$S_{CM} max = Max(S_{CM} tot) - Sna_{(CM)};$$

$$Max(S_{CM} tot) = Max(F6)+Max(F7)+Max(F8) + Max(A6/2) + Max(A8) + Max(CA1)$$

(sum of maximum scores of all CM indicators);

$$Sna_{(CM)} = \text{sum of maximum scores of not applied CM indicators.}$$

**2.2. CROSS-SECTION CONFIGURATION**

$$MAI_{CS} = (F9+A4/2+A9/2+A10/2+CA2+CA3)/Smax$$

$$MQI_{CS} = (S_{CS} max/Smax) - MAI_{CS}$$

Where:

$$S_{CS} max = Max(S_{CS} tot) - Sna_{(CS)};$$

$$Max(S_{CS} tot) = Max(F9)+Max(A4/2)+Max(A9/2)+Max(A10/2)+Max(CA2)+Max(CA3)$$

(sum of maximum scores of all CS indicators);

$$Sna_{(CS)} = \text{sum of maximum scores of not applied CS indicators.}$$

**2.3. SUBSTRATE**

$$MAI_S = (F10+F11+A9/2+A10/2+A11)/Smax$$

$$MQI_S = (S_S max/Smax) - MAI_S$$

Where:

$$S_S max = Max(S_S tot) - Sna_{(S)};$$

$$Max(S_S tot) = Max(F10)+Max(F11)+Max(A9/2)+Max(A10/2)+Max(A11)$$

(sum of maximum scores of all S indicators);

$Sna(s)$  = sum of maximum scores of not applied  $S$  indicators.

**3. VEGETATION**

$$MAI_{VE} = (F12+F13+A12)/Smax$$

$$MQI_{VE} = (S_{VE} max/Smax) - MAI_{VE}$$

Where:

$VE$  is for vegetation;

$$S_{VE} max = Max(S_{VE} tot) - Sna(VE);$$

$Max(S_{VE} tot) = Max(F12)+Max(F13)+ Max(A12)$  (sum of maximum scores of all  $VE$  indicators);

$Sna(VE) =$  sum of maximum scores of not applied  $VE$  indicators.

As before, the sub-indices can be related to the maximum value that they can reach for a given category, by dividing overall value of  $MAI$  and  $MQI$  in the part relative to each category as follows:

**1. CONTINUITY**

$$MAI_C max = MQI_C max = S_C max/Smax$$

Where:

$$S_C max = Max(S_C tot) - Sna(C) = S_{CL} max + S_{CLA} max;$$

$$Max(S_C tot) = Max(S_{CL} tot) + Max(S_{CLA} tot)$$

(sum of maximum scores of all  $C$  indicators, or sum of maximum scores of all  $CL$  and  $CLA$  indicators);

$$Sna(C) = Sna(CL) + Sna(CLA)$$

(sum of maximum scores of not applied  $C$  indicators, or sum of maximum scores of not applied  $CL$  and  $CLA$  indicators).

**2. MORPHOLOGY**

$$MAI_M max = MQI_M max = S_M max/Smax$$

Where:

$$S_M max = Max(S_M tot) - Sna(M) = S_{CM} max + S_{CS} max + S_S max;$$

$$Max(S_M tot) = Max(S_{CM} tot) + Max(S_{CS} tot) + Max(S_S tot)$$

(sum of maximum scores of all  $M$  indicators, or sum of maximum scores of all  $CM$ ,  $CS$  and  $S$  indicators);

$$Sna(M) = Sna(CM) + Sna(CS) + Sna(S)$$

(sum of maximum scores of not applied  $M$  indicators, or sum of maximum scores of not applied  $CM$ ,  $CS$  and  $S$  indicators).

**3. VEGETATION**

$$MAI_{VE} max = MQI_{VE} max = S_{VE} max/Smax$$

**EXAMPLE OF COMPILED EVALUATION FORM**

An example of a compiled evaluation form is reported as follows. This example is useful in understanding how to compile the forms and in accounting for the confidence degree in the calculation of the range of variability of  $MQI$ .

**IDRAIM: stream hydromorphological evaluation, analysis and monitoring system**

**EVALUATION FORMS FOR PARTLY CONFINED AND UNCONFINED CHANNELS**  
Version 1.1 - September 2012

**GENERALITY**

Date 01 / 01 / 20 10 Operators M. Rossi  
 Catchment Idraim Stream/river Idraim River  
 Upstream limit confluence Idraim branch Downstream limit nearby S. Anna  
 Segment code 4 Reach Code 4.3 Reach length (m) 2.4 km

**GENERAL SETTING AND INITIAL SEGMENTATION**

**1. Physiographic setting**  
 Physiographic area P HM=Hills-mountains, P=Plain Physiographic unit High plain

**2. Confinement**  
 Confinement degree (%) 10-90 >90, 10-90, ≤10  
 Confinement index >n 1-1.5, 1.5-n, >n (n=5 single-thread channels; n=2 multi-thread or wandering channels)  
 Confinement class SC PC=Partly confined, U=Unconfined

**3. Channel morphology**  
 Aerial photo or satellite image Aerial Flight Tuscany Region 2007 (name, year)  
 Sinuosity index ~ 1.2 1-1.05, 1.05-1.5, >1.5  
 Braiding index ~ 1.3 1-1.5, >1.5 Anastomosing index 1 1-1.5, >1.5  
 Typology W ST=Straight, S=Sinuous, M=Meandering, SAB= Sinuous with alternate bars,  
 W= Wandering, B= Braided, A= Anastomosed  
 Bed configuration BR BR=bedrock, C/SP=Cascade/Step Pool, PB=Plane bed, RP=Riffle Pool, DR=Dune ripple  
 (only for ST, S, M, SAB morphologies) A= Artificial, NC= not classified (high depth or strong alteration)  
 Mean bed slope 0.0035 Mean channel width (m) 42  
 Bed sediment (dominant) G-C C=Clay, Si=Silt, Sa=Sand, G=Gravel, C=Cobbles, B=Boulders

**4. Other elements for reach delimitation**  
 Upstream Tributary Downstream \_\_\_\_\_  
 bed slope discontinuity, tributary, dam, artificialization, changes in width of alluvial plain and/or in confinement,  
 changes in channel width, changes in grain sizes, other (specify) \_\_\_\_\_

**Additional available data / information**  
 Drainage area (at the downstream limit) (km<sup>2</sup>) 760  
 Sediment size D<sub>50</sub> (mm) 35 Unit Ba(SU) Be=Bed, Ba=Bar (SU=surface layer, SUB=sublayer)  
 Discharges NA M=measured, E=estimated, NA=not available  
 Gauging station (if M) \_\_\_\_\_ Mean annual discharge (m<sup>3</sup>/s) \_\_\_\_\_ Q<sub>1.5</sub> (m<sup>3</sup>/s) \_\_\_\_\_  
 Maximum discharges (indicate year and Q when known) Intense flood in 2004

**GEOMORPHOLOGICAL FUNCTIONALITY**

**Continuity**

		part.	prog.	conf.
<b>F1</b>	<b>Longitudinal continuity in sediment and wood flux</b>			
A	Absence of alteration in the continuity of sediment and wood	0		
B	Slight alteration (obstacles to the flux but with no interception)	3		
C	Strong alteration (discontinuity of channel forms and interception of sediment and wood)	5	5	

There is a large check dam intercepting most of the bedload and creating a discontinuity of channel forms (disappearance of bars downstream)

		part.	prog.	conf.
<b>F2</b>	<b>Presence of a modern floodplain</b>			
A	Presence of a continuous (>66% of the reach) and wide floodplain	0		
B	Presence of a discontinuous (10÷66%) floodplain of any width or >90% but narrow	3		
C	Absence of a floodplain or negligible presence (≤10% of any width)	5	8	

Not evaluated in the case of mountain streams along steep (>3%) alluvial fans  
 There is some uncertainty for part of the reach whether it is a modern floodplain or a low terrace

part.: partial scores (to circle) prog.: progressive scores confidence level between A and B  
 conf.: confidence level in the answer, with M=Medium, L=Low (High is omitted) confidence level between B and C



**IDRAIM: stream hydromorphological evaluation, analysis and monitoring system**

<b>F4 Processes of bank retreat</b>			
A	Presence of frequent retreating banks particularly along outer banks of bends	0	
B	Infrequent retreating banks because impeded by bank protections and/or scarce channel dynamics	2	
C	Complete absence or widespread presence of unstable banks by mass failures	3	8

*Not evaluated in the case of straight – sinuous channels of low energy (lowland rivers, low gradients and/or bedload)*

<b>F5 Presence of a potentially erodible corridor</b>			
A	Presence of a wide potentially erodible corridor (EC) for a length >66% of the reach	0	
B	Presence of a narrow potentially EC for >66%, or wide but for 33-66% of the reach	2	
C	Presence of a potentially EC of any width but for ≤33% of the reach	3	10

**Morphology**

*Morphological pattern*

<b>F7 Forms and processes typical of the channel pattern</b>			
A	Absence (<5%) of alteration of the natural heterogeneity of forms expected for that river type	0	
B	Alterations for a limited portion of the reach (≤33%)	3	
C	Consistent alterations for a significant portion of the reach (>33%)	5	13

<b>F8 Presence of typical fluvial forms in the alluvial plain</b>			
A	Presence of alluvial plain forms (oxbow lakes, secondary channels, etc.)	0	
B	Presence of traces of alluvial plain forms (abandoned after the 1950s) but with possible reactivation	2	
C	Complete absence of alluvial plain forms	3	

*Evaluated only in the case of meandering rivers (now or in the past) within a lowland plain physiographic unit*

*Cross-section configuration*

<b>F9 Variability of the cross-section</b>			
A	Absence (≤5%) of alteration of the cross-section natural heterogeneity (width and depth)	0	
B	Presence of alteration (cross-section homogeneity) for a limited portion of the reach (≤33%)	3	
C	Presence of alteration (cross-section homogeneity) for a significant portion of the reach (>33%)	5	16

*Not evaluated in the case of straight, sinuous or meandering channels with natural absence of bars (lowland rivers, low gradients and/or low bedload) (natural cross-section homogeneity)*

*Bed structure and substrate*

<b>F10 Structure of the channel bed</b>			
A	Natural heterogeneity of bed sediments and no significant clogging	0	
B	Evident armouring or clogging in various portions of the site	2	
C1	Evident and widespread (>90%) armouring or clogging, or occasional substrate outcrops	5	
C2	Widespread substrate outcrops or alteration by bed revetments (>33% of the reach)	6	21

*Not evaluated for sand-bed rivers, and for deep rivers when it is not possible to observe the channel bed*

<b>F11 Presence of in-channel large wood</b>			
A	Presence of large wood	0	
C	Negligible presence or absence of large wood	3	21

*Not evaluated above the tree-line and in streams with natural absence of riparian vegetation*

**IDRAIM: stream hydromorphological evaluation, analysis and monitoring system**

**Vegetation in the fluvial corridor**

F12 Width of functional vegetation			
A	High width of functional vegetation	0	
B	Medium width of functional vegetation	2	
C	Low width of functional vegetation	3	23

Not evaluated above the tree-line and in streams with natural absence of riparian vegetation

F13 Linear extension of functional vegetation			
A	Linear extension of functional vegetation >90% of maximum available length	0	
B	Linear extension of functional vegetation 33-90% of maximum available length	3	
C	Linear extension of functional vegetation ≤33% of maximum available length	5	26

Not evaluated above the tree-line and in streams with natural absence of riparian vegetation

**ARTIFICIALITY**

**Upstream alteration of longitudinal continuity**

			part.	prog.	conf.
A1 Upstream alteration of flows					
A	No significant alteration (≤10%) of channel-forming discharges and with return interval >10 years	0			
B	Significant alteration (>10%) of discharges with return interval >10 years	3			
C	Significant alteration (>10%) of channel-forming discharges	6			29

A2 Upstream alteration of sediment discharges					
A	Absence or negligible presence of structures for the interception of sediment fluxes (dams for drainage area <5% and/or check dams/abstraction weirs for drainage area <33%)	0			
B1	Dams (area 5-33%) and/or check dams/weirs with total bedload interception (area 33-66%) and/or check dams/weirs with partial interception (area >33% plain/hills or >66% mountains)	3			
B2	Dams (drainage area 33-66%) and/or check dams/weirs with total bedload interception (drainage area >66% or at the upstream boundary)	6			
C1	Dams for drainage area >66%	9			
C2	Dam at the upstream boundary of the reach	12			35

**Alteration of longitudinal continuity in the reach**

A3 Alteration of flows in the reach					
A	No significant alteration (≤10%) of channel-forming discharges and with return interval >10 years	0			
B	Significant alteration (>10%) of discharges with return interval >10 years	3			
C	Significant alteration (>10%) of channel-forming discharges	6			35

A4 Alteration of sediment discharge in the reach					
A	Absence of structures for the interception of sediment fluxes (dams, check dams, abstraction weirs)	0			
B	Plain/hills units: consolidation check dams and/or abstraction weirs ≤1 every 1000 m Mountain units: consolidation check dams ≤1 every 200 m and/or open check dams	4			
C	Plain/hill units: consolidation check dams and/or abstraction weirs >1 every 1000 m Mountain units: consolidation check dams >1 every 200 m and/or retention check dams or presence of a dam or artificial reservoir at the downstream boundary (any physiographic units)	6			39

In case of density of interception structures, including bed sills and ramps (see A9), is >1 every n, add 12 where n=100 m in mountain units, or n=500 m in plain/hills units



**IDRAIM: stream hydromorphological evaluation, analysis and monitoring system**

<b>A5 Crossing structures</b>			
A	Absence of crossing structures (bridges, fords culverts)	0	
B	Presence of some crossing structure ( $\leq 1$ every 1000 m in average in the reach)	2	
C	Presence of many crossing structure ( $> 1$ every 1000 m in average in the reach)	3	41
In case of extremely high density of bank protection ( $> 80\%$ ) add 12 <input type="checkbox"/>			

**Alteration of lateral continuity**

<b>A6 Bank protections</b>			
A	Absence or localized presence of bank protections ( $\leq 5\%$ total length of the banks)	0	
B	Presence of protections for $\leq 33\%$ total length of the banks (sum of both banks)	3	
C	Presence of protections for $> 33\%$ total length of the banks (sum of both banks)	6	41
In case of extremely high density of bank protection ( $> 80\%$ ) add 12 <input type="checkbox"/>			

<b>A7 Artificial levees</b>			
A	Absent or distant levees, or presence of levees close or at contact $\leq 10\%$ total length of the banks	0	
B	Medium presence of levees close and/or at contact (at contact $\leq 50\%$ bank length)	3	
C	High presence of levees close and/or at contact (at contact $> 50\%$ bank length)	6	41
In case of extremely high density of levees at contact ( $> 80\%$ ) add 12 <input type="checkbox"/>			

**Alteration of channel morphology and/or substrate**

<b>A8 Artificial changes of river course</b>			
A	Absence of artificial changes of river course in the past (meanders cut-off, channel diversions, etc.)	0	
B	Presence of changes of river course for $\leq 10\%$ of the reach length	2	
C	Presence of changes of river course for $> 10\%$ of the reach length	3	41

<b>A9 Other bed stabilization structures</b>			
A	Absence of structures (bed sills/ramps) and revetments absent or localised ( $\leq 5\%$ )	0	
B	Sills or ramps ( $\leq 1$ every $m$ ) and/or revetments $\leq 25\%$ permeable and/or $\leq 15\%$ impermeable	3	
C1	Sills or ramps ( $> 1$ every $m$ ) and/or revetments $\leq 50\%$ permeable and/or $\leq 33\%$ impermeable	6	
C2	Revetments $> 50\%$ permeable and/or $> 33\%$ impermeable	8	44
<i>m=200 m in mountain units; m= 1000 m in plain/hills units</i>			
In case of widespread bed revetment ( $> 80\%$ ) add 12 <input type="checkbox"/>			

**Intervention of maintenance and removal**

<b>A10 Sediment removal</b>			
A	Absence of recent (last 20 years) and past (from 1950s) significant sediment removal activities	0	
B	Moderate activities in the past (from 1950s) but absent during last 20 years, or absent in the past but present recently (last 20 years)	3	
C	Intense activities in the past, or moderate in the past but present during last 20 years	6	50
<i>There is some uncertainty whether the activity in the past was intense or moderate.</i>			
<i>There was not sediment removal activity during the last 20 years.</i>			

<b>A11 Wood removal</b>			
A	Absence of removal of woody material at least during the last 20 years	0	
B	Selective cuts and/or clear cuts over $\leq 50\%$ of the reach during the last 20 years	2	
C	Total removal of woody material during the last 20 years	5	52
<i>Not evaluated above the tree-line and in streams with natural absence of riparian vegetation</i>			

**IDRAIM: stream hydromorphological evaluation, analysis and monitoring system**

<b>A12</b>	<b>Vegetation management</b>		
A	No cutting interventions on riparian vegetation during the last 20 years	0	
B	Selective cuts and/or clear cuts over ≤50% of the reach during the last 20 years	2	
C	Clear cuts over >50% of the reach during the last 20 years	5	52

Not evaluated above the tree-line and in streams with natural absence of riparian vegetation

**CHANNEL ADJUSTMENTS**

		part.	prog.	conf.
<b>CA1</b>	<b>Adjustments in channel pattern</b>	<i>(applied only to channels wider than 30 m)</i>		
A	Absence of changes of channel pattern since 1950s	0		
B	Change to a similar channel pattern since 1950s	3		
C	Change to a different channel pattern since 1950s	6		55

<b>CA2</b>	<b>Adjustments in channel width</b>	<i>(applied only to channels wider than 30 m)</i>		
A	Absent or limited changes (≤15%) since 1950s	0		
B	Moderate changes (15÷35%) since 1950s	3		
C	Intense changes (>35%) since 1950s	6		61

<b>CA3</b>	<b>Bed-level adjustments</b>	<i>(applied only to channels wider than 30 m)</i>		
A	Negligible bed-level changes (≤0.5 m)	0		
B	Limited to moderate bed-level changes (0.5÷3 m)	4		
C1	Intense bed-level changes (>3 m)	8		
C2	Very intense bed-level changes (>6 m)	12		65

Not evaluated in the case of absolute lack of data, information and field evidences

Total deviation:  $Stot = 65$   $62 \div 67$

Maximum deviation:  $Smax = 142 - Sna = 139$

*where Sna = sum of maximum scores for those indicators that have not been applied*

Morphological Alteration Index:  $MAI = Stot / Smax = 0.47$   $0.45 \div 0.48$

*if Stot > Smax it is assumed MAI=1*

Morphological Quality Index:  $MQI = 1 - MAI = 0.53$   $0.52 \div 0.55$

Quality class of the reach Moderate

$0 \leq MQI < 0.3$ : Very Poor or Bad;  $0.3 \leq MQI < 0.5$ : Poor;  $0.5 \leq MQI < 0.7$ : Moderate;  
 $0.7 \leq MQI < 0.85$ : Good;  $0.85 \leq MQI \leq 1.0$ : Very Good or High

As it can be observed, the only indicator that has not been applied is *F8* (exclusive for meandering). Consequently, the maximum deviation is 142 – 3 (the latter is the maximum possible value for *F8*). It gives  $MAI = 0.47$  ( $= 65/139$ ), and  $MQI=0.53$ . For example, two answers do not have a high degree of confidence (*F2* and *A10*), and their relative possible deviation is +2 (*F2*) and -3 (*A10*). The result is that the total deviation of 65 could actually vary between 62 ( $=65-3$ ) and 67 ( $=65+2$ ), and consequently the  $MAI$  from 0.45 ( $= 62/139$ ) to 0.48 ( $67/139$ ). The result is a final range of  $MQI$  from 0.52 to 0.55. Therefore, the total confidence in the final score is relatively high, and does not affect the final class which remains in any case moderate.

Sub-indices are not calculated on the “field evaluation forms”, but they are automatically obtained in the “electronic evaluation forms”. For example, all calculations of the sub-indices are reported here for the compiled form (a final summary is reported in [Table 6](#)).

---

**Vertical sub-indices**

**SUB-INDEX OF FUNCTIONALITY**

$$MAI_F = S_F \text{ tot}/S_{\text{max}} = 26/139 = 0.19 \text{ on } 0.31$$

$$MQI_F = (S_F \text{ max}/S_{\text{max}}) - MAI_F = (S_F \text{ max} - S_F \text{ tot}) / S_{\text{max}} = (43 - 26)/139 = 0.12 \text{ on } 0.31$$

$$\text{being } MAI_F \text{ max} = MQI_F \text{ max} = S_F \text{ max}/S_{\text{max}} = 43/139 = 0.31$$

**SUB-INDEX OF ARTIFICIALITY**

$$MAI_A = S_A \text{ tot}/S_{\text{max}} = 26/139 = 0.19 \text{ on } 0.52$$

$$MQI_A = (S_A \text{ max}/S_{\text{max}}) - MAI_A = (S_A \text{ max} - S_A \text{ tot}) / S_{\text{max}} = (72 - 26)/139 = 0.33 \text{ on } 0.52$$

$$\text{being } MAI_A \text{ max} = MQI_A \text{ max} = S_A \text{ max}/S_{\text{max}} = 72/139 = 0.52$$

**SUB-INDEX OF CHANNEL ADJUSTMENTS**

$$MAI_{CA} = S_{CA} \text{ tot}/S_{\text{max}} = 13/139 = 0.09 \text{ on } 0.17$$

$$MQI_{CA} = (S_{CA} \text{ max}/S_{\text{max}}) - MAI_{CA} = (S_{CA} \text{ max} - S_{CA} \text{ tot}) / S_{\text{max}} = (24 - 13)/139 = 0.08 \text{ on } 0.17$$

$$\text{being } MAI_{CA} \text{ max} = MQI_{CA} \text{ max} = S_{CA} \text{ max}/S_{\text{max}} = 24/139 = 0.17$$


---

**Horizontal sub-indices**

**SUB-INDEX OF CONTINUITY**

$$MAI_C = MAI_{CL} + MAI_{CLA} = 0.13 + 0.04 = 0.17 \text{ on } 0.40$$

$$MQI_C = MQI_{CL} + QIM_{CLA} = 0.12 + 0.11 = 0.23 \text{ on } 0.40$$

$$\text{being } MAI_C \text{ max} = MQI_C \text{ max} = S_C \text{ max}/S_{\text{max}} = (S_{CL} \text{ max} + S_{CLA} \text{ max})/ S_{\text{max}} = (35+20)/139 = 0.40$$

**LONGITUDINAL CONTINUITY**

$$MAI_{CL} = (F1+A1+A2+A3+A4/2+A5)/S_{\text{max}} = 18/139 = 0.13$$

$$MQI_{CL} = (S_{CL} \text{ max}/S_{\text{max}}) - MAI_{CL} = (35/139) - 0.13 = 0.12$$

**LATERAL CONTINUITY**

$$MAI_{CLA} = (F2+F3+F4+F5+A6/2+A7)/S_{\text{max}} = 5/139 = 0.04$$

$$MQI_{CLA} = (S_{CLA} \text{ max}/S_{\text{max}}) - MAI_{CLA} = (20/139) - 0.04 = 0.11$$

**SUB-INDEX OF MORPHOLOGY**

$$MAI_M = MAI_{CM} + MAI_{CS} + MAI_S = 0.04 + 0.14 + 0.08 = 0.26 \text{ on } 0.51$$

$$MQI_M = MQI_{CM} + MQI_{CS} + MQI_S = 0.08 + 0.10 + 0.07 = 0.26 \text{ on } 0.51$$

$$\text{being } MAI_M \text{ max} = MQI_M \text{ max} = S_M \text{ max}/S_{\text{max}} = (S_{CM} \text{ max} + S_{CS} \text{ max} + S_S \text{ max})/ S_{\text{max}} = (17 + 33 + 21)/139 = 0.51$$

**MORPHOLOGICAL CONFIGURATION**

$$MAI_{CM} = (F6+F7+F8+A6/2+A8+CA1)/S_{\text{max}} = 6/139 = 0.04$$

$$MQI_{CM} = (S_{CM} \text{ max}/S_{\text{max}}) - MAI_{CM} = (17/139) - 0.04 = 0.08$$

**CROSS-SECTION CONFIGURATION**

$$MAI_{CS} = (F9+A4/2+A9/2+A10/2+CA2+CA3)/S_{\text{max}} = 19.5/139 = 0.14$$

$$MQI_{CS} = (S_{CS} \text{ max}/S_{\text{max}}) - MAI_{CS} = (33/139) - 0.14 = 0.10$$



**SUBSTRATE**

$$MAI_S = (F10+F11+A9/2+A10/2+A11)/Smax = 11.5/139 = 0.08$$

$$MQI_S=(S_S max/Smax) - MAI_S = (21/139) - 0.08 = 0.07$$

**SUB-INDEX OF VEGETATION**

$$MAI_{VE} = (F12+F13+A12)/Smax = 5/139 = 0.04 \text{ on } 0.09$$

$$MQI_{VE}=(S_{VE} max/Smax) - MAI_{VE} = (13/139) - 0.04 = 0.06 \text{ on } 0.09$$

$$\text{being } MAI_{VE} max = MQI_{VE} max = S_{VE} max/Smax = 13/139 = 0.09$$

**Table 6** – Summary of sub-indices for the example in the compiled form. In the last column on the right the maximum possible value for the sub-index of each category is reported.

SUB-INDICES	MAI	MQI	TOTAL
<b>Vertical</b>			
FUNCTIONALITY	0.19	0.12	0.31
ARTIFICIALITY	0.19	0.33	0.52
CHANNEL ADJUSTMENTS	0.09	0.08	0.17
<b>Horizontal</b>			
CONTINUITY	0.17	0.23	0.40
<i>Longitudinal</i>	0.13	0.12	
<i>Lateral</i>	0.04	0.11	
MORPHOLOGY	0.26	0.25	0.51
<i>Morphological pattern</i>	0.04	0.08	
<i>Cross-section configuration</i>	0.14	0.10	
<i>Substrate</i>	0.08	0.07	
VEGETATION	0.04	0.06	0.09

# **APPENDIX 2**

## **EVALUATION FORM FOR CONFINED CHANNELS**





**IDRAIM: stream hydromorphological evaluation, analysis and monitoring system**

**EVALUATION FORMS FOR CONFINED CHANNELS**  
Version 1.1 - September 2012

**GENERALITY**

Date \_\_\_\_\_ Operators \_\_\_\_\_  
 Catchment \_\_\_\_\_ Stream/river \_\_\_\_\_  
 Upstream limit \_\_\_\_\_ Downstream limit \_\_\_\_\_  
 Segment code \_\_\_\_\_ Reach Code \_\_\_\_\_ Reach length (m) \_\_\_\_\_

**GENERAL SETTING AND INITIAL SEGMENTATION**

**1. Physiographic setting**

Physiographic unit \_\_\_\_\_

**2. Confinement**

Confinement degree (%) \_\_\_\_\_ >90, 10-90 Confinement index \_\_\_\_\_ (1-1.5)

**3. Channel morphology**

Aerial photo or satellite image \_\_\_\_\_ (name, year)

Channel type \_\_\_\_\_ ST=single-thread, MTW=multi-thread or wandering

*Confined single-thread (ST):*

Bed configuration \_\_\_\_\_ BR=Bedrock, CO=Colluvial, C/SP=Cascade/Step Pool, PB=Plane bed, RP=Riffle Pool,  
 DR=Dune ripple, A= Artificial, NC= not classified (high depth or strong alteration)

*Confined multi-thread or wandering (MTW):*

Braiding index \_\_\_\_\_ 1-1.5, >1.5 Anastomosing index \_\_\_\_\_ 1-1.5, >1.5

Tipology \_\_\_\_\_ W= wandering, B= Braided, A= Anastomosed

Mean bed slope \_\_\_\_\_ Mean channel width (m) \_\_\_\_\_

Bed sediment (dominant) \_\_\_\_\_ C=Clay, Si=Silt, Sa=Sand, G=Gravel, C=Cobbles, B=Boulders

**4. Other elements for reach delimitation**

Upstream \_\_\_\_\_ Downstream \_\_\_\_\_  
 bed slope discontinuity, tributary, dam, artificialization, changes in confinement, changes in channel width,  
 changes in grain sizes or bed configuration, other (specify) \_\_\_\_\_

**Additional available data / information**

Drainage area (at the downstream limit) (km<sup>2</sup>) \_\_\_\_\_

Sediment size D<sub>50</sub> (mm) \_\_\_\_\_ Unit \_\_\_\_\_ Be=Bed, Ba=Bar (SU=surface layer, SUB=sublayer)

Discharges \_\_\_\_\_ M=measured, E=estimated, NA=not available

Gauging station (if M) \_\_\_\_\_ Mean annual discharge (m<sup>3</sup>/s) \_\_\_\_\_ Q<sub>1.5</sub> (m<sup>3</sup>/s) \_\_\_\_\_

Maximum discharges (indicate year and Q when known) \_\_\_\_\_

**GEOMORPHOLOGICAL FUNCTIONALITY**

**Continuity**

		part.	prog.	conf.
<b>F1</b>	<b>Longitudinal continuity in sediment and wood flux</b>			
A	Absence of alteration in the continuity of sediment and wood	0		
B	Slight alteration (obstacles to the flux but with no interception)	3		
C	Strong alteration (discontinuity of channel forms and interception of sediment and wood)	5		

<b>F3</b>	<b>Hillslope - river corridor connectivity</b>			
A	Full connectivity between hillslopes and river corridor (>90%)	0		
B	Connectivity for a significant portion of the reach (33+90%)	3		
C	Connectivity for a small portion of the reach (≤33%)	5		

part.: partial scores (to circle)

prog.: progressive scores

confidence level between A and B

conf: confidence level in the answer, with M=Medium, L=Low (High is omitted)

confidence level between B and C

**IDRAIM: stream hydromorphological evaluation, analysis and monitoring system**

**Morphology**

*Morphological pattern*

<b>F6</b>	<b>Bed configuration - valley slope</b> <i>(applied to single-thread channels)</i>		
A	Bed forms consistent with the mean valley slope	0	
B	Bed forms not consistent with the mean valley slope	3	
C	Complete alteration of bed forms for the presence of artificial bed	5	

*Not evaluated for bedrock streams, and for deep streams when it is not possible to observe the channel bed*

--	--	--	--

<b>F7</b>	<b>Forms and processes typical of the channel pattern</b> <i>(applied to multi-thread or wandering channels)</i>		
A	Absence (<5%) of alteration of the natural heterogeneity of forms expected for that river type	0	
B	Alterations for a limited portion of the reach (≤33%)	3	
C	Consistent alterations for a significant portion of the reach (>33%)	5	

--	--	--	--

*Cross-section configuration*

<b>F9</b>	<b>Variability of the cross-section</b>		
A	Absence (≤5%) of alteration of the cross-section natural heterogeneity (width and depth)	0	
B	Presence of alteration (cross-section homogeneity) for a limited portion of the reach (≤33%)	3	
C	Presence of alteration (cross-section homogeneity) for a significant portion of the reach (>33%)	5	

--	--	--	--

*Bed structure and substrate*

<b>F10</b>	<b>Structure of the channel bed</b>		
A	Natural heterogeneity of bed sediments and no significant clogging	0	
B	Evident clogging in various portions of the site	2	
C1	Evident and widespread (>90%) clogging	5	
C2	Complete alteration of substrate due to bed revetment (>33% of the reach)	6	

*Not evaluated for sand-bed or bedrock streams, and for deep streams when it is not possible to observe the channel bed*

--	--	--	--

<b>F11</b>	<b>Presence of in-channel large wood</b>		
A	Presence of large wood	0	
C	Negligible presence or absence of large wood	3	

*Not evaluated above the tree-line and in streams with natural absence of riparian vegetation*

--	--	--	--

**Vegetation in the fluvial corridor**

<b>F12</b>	<b>Width of functional vegetation</b>		
A	High width of functional vegetation	0	
B	Medium width of functional vegetation	2	
C	Low width of functional vegetation	3	

*Not evaluated above the tree-line and in streams with natural absence of riparian vegetation*

--	--	--	--

<b>F13</b>	<b>Linear extension of functional vegetation</b>		
A	Linear extension of functional vegetation >90% of maximum available length	0	
B	Linear extension of functional vegetation 33÷90% of maximum available length	3	
C	Linear extension of functional vegetation ≤33% of maximum available length	5	

*Not evaluated above the tree-line and in streams with natural absence of riparian vegetation*

--	--	--	--



**IDRAIM: stream hydromorphological evaluation, analysis and monitoring system**

**ARTIFICIALITY**

**Upstream alteration of longitudinal continuity**

		part.	prog.	conf.
<b>A1</b>	<b>Upstream alteration of flows</b>			
A	No significant alteration ( $\leq 10\%$ ) of channel-forming discharges and with return interval $> 10$ years	0		
B	Significant alteration ( $> 10\%$ ) of discharges with return interval $> 10$ years	3		
C	Significant alteration ( $> 10\%$ ) of channel-forming discharges	6		

**A2 Upstream alteration of sediment discharges**

A	Absence or negligible presence of structures for the interception of sediment fluxes (dams for drainage area $< 5\%$ and/or check dams/abstraction weirs for drainage area $< 33\%$ )	0		
B1	Dams (area 5-33%) and/or retention check dams with total bedload interception (area 33-66%) and/or check dams with partial bedload interception or consolidation check dams (area $> 66\%$ )	3		
B2	Dams (area 33-66%) and/or retention check dams with total bedload interception (area $> 66\%$ )	6		
C1	Dams for drainage area $> 66\%$	9		
C2	Dam at the upstream boundary of the reach	12		

**Alteration of longitudinal continuity in the reach**

<b>A3</b>	<b>Alteration of flows in the reach</b>			
A	No significant alteration ( $\leq 10\%$ ) of channel-forming discharges and with return interval $> 10$ years	0		
B	Significant alteration ( $> 10\%$ ) of discharges with return interval $> 10$ years	3		
C	Significant alteration ( $> 10\%$ ) of channel-forming discharges	6		

**A4 Alteration of sediment discharge in the reach**

A	Absence of structures for the interception of sediment fluxes (dams, check dams, abstraction weirs)	0		
B	Consolidation check dams $\leq 1$ every 200 m and/or open check dams	4		
C	Consolidation check dams $> 1$ every 200 m and/or retention check dams or presence of a dam or artificial reservoir at the downstream boundary	6		
<i>In case of density of interception structures, including bed sills and ramps (see A9), is <math>&gt; 1</math> every 100 m, add</i>		12		

**A5 Crossing structures**

A	Absence of crossing structures (bridges, fords, culverts)	0		
B	Presence of some crossing structure ( $\leq 1$ every 1000 m in average in the reach)	2		
C	Presence of many crossing structure ( $> 1$ every 1000 m in average in the reach)	3		

**Alteration of lateral continuity**

<b>A6</b>	<b>Bank protections</b>			
A	Absence or localized presence of bank protections ( $\leq 5\%$ total length of the banks)	0		
B	Presence of protections for $\leq 33\%$ total length of the banks (sum of both banks)	3		
C	Presence of protections for $> 33\%$ total length of the banks (sum of both banks)	6		
<i>In case of extremely high density of bank protection (<math>&gt; 80\%</math>) add</i>		12		

**Alteration of channel morphology and/or substrate**

<b>A9</b>	<b>Other bed stabilization structures</b>			
A	Absence of structures (bed sills/ramps) and revetments absent or localised ( $\leq 5\%$ )	0		
B	Sills or ramps ( $\leq 1$ every 200 m) and/or revetments $\leq 25\%$ permeable and/or $\leq 15\%$ impermeable	3		
C1	Sills or ramps ( $> 1$ every 200 m) and/or revetments $\leq 50\%$ permeable and/or $\leq 33\%$ impermeable	6		
C2	Revetments $> 50\%$ permeable and/or $> 33\%$ impermeable	8		
<i>In case of widespread bed revetment (<math>&gt; 80\%</math>) add</i>		12		

**IDRAIM: stream hydromorphological evaluation, analysis and monitoring system**

**Intervention of maintenance and removal**

A10 Sediment removal		
A	Absence of significant sediment removal activities during the last 20 years	0
B	Localized sediment removal activities during the last 20 years	3
C	Widespread sediment removal activities during the last 20 years	6

Not evaluated in the case of bedrock streams

--

A11 Wood removal		
A	Absence of removal of woody material at least during the last 20 years	0
B	Selective cuts and/or clear cuts over ≤50% of the reach during the last 20 years	2
C	Total removal of woody material during the last 20 years	5

Not evaluated above the tree-line and in streams with natural absence of riparian vegetation

--

A12 Vegetation management		
A	No cutting interventions on riparian vegetation during the last 20 years	0
B	Selective cuts and/or clear cuts over ≤50% of the reach during the last 20 years	2
C	Clear cuts over >50% of the reach during the last 20 years	5

Not evaluated above the tree-line and in streams with natural absence of riparian vegetation

--

**CHANNEL ADJUSTMENTS**

CA1 Adjustments in channel pattern <i>(applied only to channels wider than 30 m)</i>			part.	prog.	conf.
A	Absence of change of channel pattern since 1950s	0			
B	Change of channel pattern since 1950s	3			

--

CA2 Adjustments in channel width <i>(applied only to channels wider than 30 m)</i>		
A	Absent or limited changes in channel width (≤15%) since 1950s	0
B	Changes in channel width >15% since 1950s	3

--

CA3 Bed-level adjustments <i>(applied only to channels wider than 30 m)</i>		
A	Negligible bed-level changes (≤0.5 m)	0
B	Limited to moderate bed-level changes (0.5÷3 m)	4
C	Intense bed-level changes (>3 m)	8

Not evaluated in the case of absolute lack of data, information and field evidences

--

Total deviation:  $Stot =$

Maximum deviation:  $Smax = 119 - Sna =$

where  $Sna$  = sum of maximum scores for those indicators that have not been applied

Morphological Alteration Index:  $MAI = Stot / Smax =$

if  $Stot > Smax$  it is assumed  $MAI = 1$

Morphological Quality Index:  $MQI = 1 - MAI =$

Quality class of the reach

$0 \leq MQI < 0.3$ : Very Poor or Bad;  $0.3 \leq MQI < 0.5$ : Poor;  $0.5 \leq MQI < 0.7$ : Moderate;  
 $0.7 \leq MQI < 0.85$ : Good;  $0.85 \leq MQI \leq 1.0$ : Very Good or High



# **APPENDIX 3**

## **EVALUATION FORM FOR PARTLY CONFINED OR UNCONFINED CHANNEL**





**IDRAIM: stream hydromorphological evaluation, analysis and monitoring system**

**EVALUATION FORMS FOR PARTLY CONFINED AND UNCONFINED CHANNELS**  
Version 1.1 - September 2012

**GENERALITY**

Date \_\_\_\_\_ Operators \_\_\_\_\_  
 Catchment \_\_\_\_\_ Stream/river \_\_\_\_\_  
 Upstream limit \_\_\_\_\_ Downstream limit \_\_\_\_\_  
 Segment code \_\_\_\_\_ Reach Code \_\_\_\_\_ Reach length (m) \_\_\_\_\_

**GENERAL SETTING AND INITIAL SEGMENTATION**

**1. Physiographic setting**  
 Physiographic area \_\_\_\_\_ *HM*=Hills-mountains, *P*=Plain Physiographic unit \_\_\_\_\_

**2. Confinement**  
 Confinement degree (%) \_\_\_\_\_ >90, 10-90, ≤10  
 Confinement index \_\_\_\_\_ 1-1.5, 1.5-*n*, >*n* (*n*=5 single-thread channels; *n*=2 multi-thread or wandering channels)  
 Confinement class \_\_\_\_\_ *PC*=Partly confined, *U*=Unconfined

**3. Channel morphology**  
 Aerial photo or satellite image \_\_\_\_\_ (name, year)  
 Sinuosity index \_\_\_\_\_ 1-1.05, 1.05-1.5, >1.5  
 Braiding index \_\_\_\_\_ 1-1.5, >1.5 Anastomosing index \_\_\_\_\_ 1-1.5, >1.5  
 Typology \_\_\_\_\_ *ST*=Straight, *S*=Sinuous, *M*=Meandering, *SAB*= Sinuous with alternate bars,  
*W*= Wandering, *B*= Braided, *A*= Anastomosed  
 Bed configuration \_\_\_\_\_ *BR*=bedrock, *C/SP*=Cascade/Step Pool, *PB*=Plane bed, *RP*=Riffle Pool, *DR*=Dune ripple  
 (only for *ST*, *S*, *M*, *SAB* morphologies) *A*= Artificial, *NC*= not classified (high depth or strong alteration)  
 Mean bed slope \_\_\_\_\_ Mean channel width (m) \_\_\_\_\_  
 Bed sediment (dominant) \_\_\_\_\_ *C*=Clay, *Si*=Silt, *Sa*=Sand, *G*=Gravel, *C*=Cobbles, *B*=Boulders

**4. Other elements for reach delimitation**  
 Upstream \_\_\_\_\_ Downstream \_\_\_\_\_  
 bed slope discontinuity, tributary, dam, artificialization, changes in width of alluvial plain and/or in confinement,  
 changes in channel width, changes in grain sizes, other (specify) \_\_\_\_\_

**Additional available data / information**  
 Drainage area (at the downstream limit) (km<sup>2</sup>) \_\_\_\_\_  
 Sediment size D<sub>50</sub> (mm) \_\_\_\_\_ Unit \_\_\_\_\_ *Be*=Bed, *Ba*=Bar (*SU*=surface layer, *SUB*=sublayer)  
 Discharges \_\_\_\_\_ *M*=measured, *E*=estimated, *NA*=not available  
 Gauging station (if *M*) \_\_\_\_\_ Mean annual discharge (m<sup>3</sup>/s) \_\_\_\_\_ Q<sub>1.5</sub> (m<sup>3</sup>/s) \_\_\_\_\_  
 Maximum discharges (indicate year and Q when known) \_\_\_\_\_

**GEOMORPHOLOGICAL FUNCTIONALITY**

Continuity		part.	prog.	conf.
<b>F1</b>	<b>Longitudinal continuity in sediment and wood flux</b>			
A	Absence of alteration in the continuity of sediment and wood	0		
B	Slight alteration (obstacles to the flux but with no interception)	3		
C	Strong alteration (discontinuity of channel forms and interception of sediment and wood)	5		
<b>F2</b>	<b>Presence of a modern floodplain</b>			
A	Presence of a continuous (>66% of the reach) and wide floodplain	0		
B	Presence of a discontinuous (10÷66%) floodplain of any width or >90% but narrow	3		
C	Absence of a floodplain or negligible presence (≤10% of any width)	5		

*Not evaluated in the case of mountain streams along steep (>3%) alluvial fans*

part.: partial scores (to circle)      prog.: progressive scores      confidence level between A and B  
 conf.: confidence level in the answer, with M=Medium, L=Low (High is omitted)      confidence level between B and C



**IDRAIM: stream hydromorphological evaluation, analysis and monitoring system**

<b>F4 Processes of bank retreat</b>			
A	Presence of frequent retreating banks particularly along outer banks of bends	0	<input type="checkbox"/>
B	Infrequent retreating banks because impeded by bank protections and/or scarce channel dynamics	2	<input type="checkbox"/>
C	Complete absence or widespread presence of unstable banks by mass failures	3	<input type="checkbox"/>

*Not evaluated in the case of straight – sinuous channels of low energy (lowland rivers, low gradients and/or bedload)*

<b>F5 Presence of a potentially erodible corridor</b>			
A	Presence of a wide potentially erodible corridor (EC) for a length >66% of the reach	0	<input type="checkbox"/>
B	Presence of a narrow potentially EC for >66%, or wide but for 33-66% of the reach	2	<input type="checkbox"/>
C	Presence of a potentially EC of any width but for ≤33% of the reach	3	<input type="checkbox"/>

**Morphology**

*Morphological pattern*

<b>F7 Forms and processes typical of the channel pattern</b>			
A	Absence (<5%) of alteration of the natural heterogeneity of forms expected for that river type	0	<input type="checkbox"/>
B	Alterations for a limited portion of the reach (≤33%)	3	<input type="checkbox"/>
C	Consistent alterations for a significant portion of the reach (>33%)	5	<input type="checkbox"/>

<b>F8 Presence of typical fluvial forms in the alluvial plain</b>			
A	Presence of alluvial plain forms (oxbow lakes, secondary channels, etc.)	0	<input type="checkbox"/>
B	Presence of traces of alluvial plain forms (abandoned after the 1950s) but with possible reactivation	2	<input type="checkbox"/>
C	Complete absence of alluvial plain forms	3	<input type="checkbox"/>

*Evaluated only in the case of meandering rivers (now or in the past) within a lowland plain physiographic unit*

*Cross-section configuration*

<b>F9 Variability of the cross-section</b>			
A	Absence (≤5%) of alteration of the cross-section natural heterogeneity (width and depth)	0	<input type="checkbox"/>
B	Presence of alteration (cross-section homogeneity) for a limited portion of the reach (≤33%)	3	<input type="checkbox"/>
C	Presence of alteration (cross-section homogeneity) for a significant portion of the reach (>33%)	5	<input type="checkbox"/>

*Not evaluated in the case of straight, sinuous or meandering channels with natural absence of bars (lowland rivers, low gradients and/or low bedload) (natural cross-section homogeneity)*

*Bed structure and substrate*

<b>F10 Structure of the channel bed</b>			
A	Natural heterogeneity of bed sediments and no significant clogging	0	<input type="checkbox"/>
B	Evident armouring or clogging in various portions of the site	2	<input type="checkbox"/>
C1	Evident and widespread (>90%) armouring or clogging, or occasional substrate outcrops	5	<input type="checkbox"/>
C2	Widespread substrate outcrops or alteration by bed revetments (>33% of the reach)	6	<input type="checkbox"/>

*Not evaluated for sand-bed rivers, and for deep rivers when it is not possible to observe the channel bed*

<b>F11 Presence of in-channel large wood</b>			
A	Presence of large wood	0	<input type="checkbox"/>
C	Negligible presence or absence of large wood	3	<input type="checkbox"/>

*Not evaluated above the tree-line and in streams with natural absence of riparian vegetation*

**IDRAIM: stream hydromorphological evaluation, analysis and monitoring system**

**Vegetation in the fluvial corridor**

F12 Width of functional vegetation			
A	High width of functional vegetation	0	
B	Medium width of functional vegetation	2	
C	Low width of functional vegetation	3	

Not evaluated above the tree-line and in streams with natural absence of riparian vegetation

F13 Linear extension of functional vegetation			
A	Linear extension of functional vegetation >90% of maximum available length	0	
B	Linear extension of functional vegetation 33-90% of maximum available length	3	
C	Linear extension of functional vegetation ≤33% of maximum available length	5	

Not evaluated above the tree-line and in streams with natural absence of riparian vegetation

**ARTIFICIALITY**

**Upstream alteration of longitudinal continuity**

		part.	prog.	conf.
A1 Upstream alteration of flows				
A	No significant alteration (≤10%) of channel-forming discharges and with return interval >10 years	0		
B	Significant alteration (>10%) of discharges with return interval >10 years	3		
C	Significant alteration (>10%) of channel-forming discharges	6		

A2 Upstream alteration of sediment discharges			
A	Absence or negligible presence of structures for the interception of sediment fluxes (dams for drainage area <5% and/or check dams/abstraction weirs for drainage area <33%)	0	
B1	Dams (area 5-33%) and/or check dams/weirs with total bedload interception (area 33-66%) and/or check dams/weirs with partial interception (area >33% plain/hills or >66% mountains)	3	
B2	Dams (drainage area 33-66%) and/or check dams/weirs with total bedload interception (drainage area >66% or at the upstream boundary)	6	
C1	Dams for drainage area >66%	9	
C2	Dam at the upstream boundary of the reach	12	

**Alteration of longitudinal continuity in the reach**

A3 Alteration of flows in the reach			
A	No significant alteration (≤10%) of channel-forming discharges and with return interval >10 years	0	
B	Significant alteration (>10%) of discharges with return interval >10 years	3	
C	Significant alteration (>10%) of channel-forming discharges	6	

A4 Alteration of sediment discharge in the reach			
A	Absence of structures for the interception of sediment fluxes (dams, check dams, abstraction weirs)	0	
B	Plain/hills units: consolidation check dams and/or abstraction weirs ≤1 every 1000 m Mountain units: consolidation check dams ≤1 every 200 m and/or open check dams	4	
C	Plain/hill units: consolidation check dams and/or abstraction weirs >1 every 1000 m Mountain units: consolidation check dams >1 every 200 m and/or retention check dams or presence of a dam or artificial reservoir at the downstream boundary (any physiographic units)	6	

In case of density of interception structures, including bed sills and ramps (see A9), is >1 every n, add 12 where n=100 m in mountain units, or n=500 m in plain/hills units



**IDRAIM: stream hydromorphological evaluation, analysis and monitoring system**

<b>A5 Crossing structures</b>			
A	Absence of crossing structures (bridges, fords, culverts)	0	<input type="checkbox"/>
B	Presence of some crossing structure ( $\leq 1$ every 1000 m in average in the reach)	2	<input type="checkbox"/>
C	Presence of many crossing structure ( $> 1$ every 1000 m in average in the reach)	3	<input type="checkbox"/>

**Alteration of lateral continuity**

<b>A6 Bank protections</b>			
A	Absence or localized presence of bank protections ( $\leq 5\%$ total length of the banks)	0	<input type="checkbox"/>
B	Presence of protections for $\leq 33\%$ total length of the banks (sum of both banks)	3	<input type="checkbox"/>
C	Presence of protections for $> 33\%$ total length of the banks (sum of both banks)	6	<input type="checkbox"/>
<i>In case of extremely high density of bank protection (<math>&gt; 80\%</math>) add</i>			12 <input type="checkbox"/>

<b>A7 Artificial levees</b>			
A	Absent or distant levees, or presence of levees close or at contact $\leq 10\%$ total length of the banks	0	<input type="checkbox"/>
B	Medium presence of levees close and/or at contact (at contact $\leq 50\%$ bank length)	3	<input type="checkbox"/>
C	High presence of levees close and/or at contact (at contact $> 50\%$ bank length)	6	<input type="checkbox"/>
<i>In case of extremely high density of levees at contact (<math>&gt; 80\%</math>) add</i>			12 <input type="checkbox"/>

**Alteration of channel morphology and/or substrate**

<b>A8 Artificial changes of river course</b>			
A	Absence of artificial changes of river course in the past (meanders cut-off, channel diversions, etc.)	0	<input type="checkbox"/>
B	Presence of changes of river course for $\leq 10\%$ of the reach length	2	<input type="checkbox"/>
C	Presence of changes of river course for $> 10\%$ of the reach length	3	<input type="checkbox"/>

<b>A9 Other bed stabilization structures</b>			
A	Absence of structures (bed sills/ramps) and revetments absent or localised ( $\leq 5\%$ )	0	<input type="checkbox"/>
B	Sills or ramps ( $\leq 1$ every $m$ ) and/or revetments $\leq 25\%$ permeable and/or $\leq 15\%$ impermeable	3	<input type="checkbox"/>
C1	Sills or ramps ( $> 1$ every $m$ ) and/or revetments $\leq 50\%$ permeable and/or $\leq 33\%$ impermeable	6	<input type="checkbox"/>
C2	Revetments $> 50\%$ permeable and/or $> 33\%$ impermeable	8	<input type="checkbox"/>
<i><math>m=200\text{ m}</math> in mountain units; <math>m=1000\text{ m}</math> in plain/hills units</i>			
<i>In case of widespread bed revetment (<math>&gt; 80\%</math>) add</i>			12 <input type="checkbox"/>

**Intervention of maintenance and removal**

<b>A10 Sediment removal</b>			
A	Absence of recent (last 20 years) and past (from 1950s) significant sediment removal activities	0	<input type="checkbox"/>
B	Moderate activities in the past (from 1950s) but absent during last 20 years, or absent in the past but present recently (last 20 years)	3	<input type="checkbox"/>
C	Intense activities in the past, or moderate in the past but present during last 20 years	6	<input type="checkbox"/>

<b>A11 Wood removal</b>			
A	Absence of removal of woody material at least during the last 20 years	0	<input type="checkbox"/>
B	Selective cuts and/or clear cuts over $\leq 50\%$ of the reach during the last 20 years	2	<input type="checkbox"/>
C	Total removal of woody material during the last 20 years	5	<input type="checkbox"/>
<i>Not evaluated above the tree-line and in streams with natural absence of riparian vegetation</i>			

**IDRAIM: stream hydromorphological evaluation, analysis and monitoring system**

<b>A12 Vegetation management</b>			
A	No cutting interventions on riparian vegetation during the last 20 years	0	
B	Selective cuts and/or clear cuts over ≤50% of the reach during the last 20 years	2	
C	Clear cuts over >50% of the reach during the last 20 years	5	

Not evaluated above the tree-line and in streams with natural absence of riparian vegetation

**CHANNEL ADJUSTMENTS**

			part.	prog.	conf.
<b>CA1 Adjustments in channel pattern</b>			<i>(applied only to channels wider than 30 m)</i>		
A	Absence of changes of channel pattern since 1950s	0			
B	Change to a similar channel pattern since 1950s	3			
C	Change to a different channel pattern since 1950s	6			

<b>CA2 Adjustments in channel width</b>			<i>(applied only to channels wider than 30 m)</i>		
A	Absent or limited changes (≤15%) since 1950s	0			
B	Moderate changes (15+35%) since 1950s	3			
C	Intense changes (>35%) since 1950s	6			

<b>CA3 Bed-level adjustments</b>			<i>(applied only to channels wider than 30 m)</i>		
A	Negligible bed-level changes (≤0.5 m)	0			
B	Limited to moderate bed-level changes (0.5+3 m)	4			
C1	Intense bed-level changes (>3 m)	8			
C2	Very intense bed-level changes (>6 m)	12			

Not evaluated in the case of absolute lack of data, information and field evidences

Total deviation:  $Stot =$

Maximum deviation:  $Smax = 142 - Sna =$

*where Sna = sum of maximum scores for those indicators that have not been applied*

Morphological Alteration Index:  $MAI = Stot / Smax =$

*if Stot > Smax it is assumed MAI=1*

Morphological Quality Index:  $MQI = 1 - MAI =$

Quality class of the reach

0 ≤ MQI < 0.3: Very Poor or Bad; 0.3 ≤ MQI < 0.5: Poor; 0.5 ≤ MQI < 0.7: Moderate;  
0.7 ≤ MQI < 0.85: Good; 0.85 ≤ MQI ≤ 1.0: Very Good or High



**ISPRA** – Istituto Superiore per la Protezione e la Ricerca Ambientale  
Via Vitaliano Brancati, 48  
00144 Roma  
[www.isprambiente.it](http://www.isprambiente.it)

*September, 2012*

---